



SZABO SCANDIC

Part of Europa Biosite

Produktinformation



Forschungsprodukte & Biochemikalien



Zellkultur & Verbrauchsmaterial



Diagnostik & molekulare Diagnostik



Laborgeräte & Service

Weitere Information auf den folgenden Seiten!
See the following pages for more information!



Lieferung & Zahlungsart

siehe unsere [Liefer- und Versandbedingungen](#)

Zuschläge

- Mindermengenzuschlag
- Trockeneiszuschlag
- Gefahrgutzuschlag
- Expressversand

SZABO-SCANDIC HandelsgmbH

Quellenstraße 110, A-1100 Wien

T. +43(0)1 489 3961-0

F. +43(0)1 489 3961-7

mail@szabo-scandic.com

www.szabo-scandic.com

[linkedin.com/company/szaboscandic](https://www.linkedin.com/company/szaboscandic) 

Human ApoE4 protein

Cat. No. GTX136908-pro

Species Human**Package**

500 µg

PRODUCT

Summary

APOE belongs to the apolipoprotein family and is a 299 a.a. protein with three allelic variants that give rise to the APOE 2, APOE 3, and APOE 4 isoforms. APOE is directly involved in lipoprotein metabolism and functions as a ligand for multiple receptors (e.g., the LDL receptor). These isoforms are critical for brain homeostasis and, while APOE 2 was shown to be protective in terms of Alzheimer's disease (AD) risk, the 34.4 kDa APOE 4 isoform is a major risk factor for late-onset AD.

APPLICATION

Observed MW 35 kDa.

PROPERTIES

Form Lyophilized powder**Buffer** Reconstitute with distilled water to 0.1 mg/ml. Lyophilized from 50mM PBS, 100mM NaCl, 5% Trehalose.**Preservative** No Preservative**Storage** Store at 4°C or below. After reconstitution, keep as concentrated solution. Aliquot and store at -20°C or below. Avoid multiple freeze-thaw cycles. For long-term storage after reconstitution, aliquot and store at -70°C or below. Do not vortex.**Region/Sequence** Full-length human ApoE4 protein (NP_000032.1)**Expression System** E. Coli**Purity** > 90%**Endotoxin** < 0.1 EU/µg**Conjugation** Unconjugated

Note

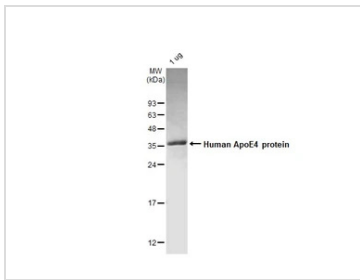
For laboratory research use only. Not for any clinical, therapeutic, or diagnostic use in humans or animals. Not for animal or human consumption.

Purchasers shall not, and agree not to enable third parties to, analyze, copy, reverse engineer or otherwise attempt to determine the structure or sequence of the product.



For full product information, images and publications, please visit our [website](#).

DATA IMAGES

**GTX136908-pro Image**

1 μ g of GTX136908-pro Human ApoE4 protein was analyzed using SDS-PAGE and stained with coomassie blue and captured by monochrome camera.



For full product information, images and publications, please visit our [website](#).