



# SZABO SCANDIC

Part of Europa Biosite

## Produktinformation



Forschungsprodukte & Biochemikalien



Zellkultur & Verbrauchsmaterial



Diagnostik & molekulare Diagnostik



Laborgeräte & Service

Weitere Information auf den folgenden Seiten!  
See the following pages for more information!



### Lieferung & Zahlungsart

siehe unsere [Liefer- und Versandbedingungen](#)

### Zuschläge

- Mindermengenzuschlag
- Trockeneiszuschlag
- Gefahrgutzuschlag
- Expressversand

### SZABO-SCANDIC HandelsgmbH

Quellenstraße 110, A-1100 Wien

T. +43(0)1 489 3961-0

F. +43(0)1 489 3961-7

[mail@szabo-scandic.com](mailto:mail@szabo-scandic.com)

[www.szabo-scandic.com](http://www.szabo-scandic.com)

[linkedin.com/company/szaboscandic](https://www.linkedin.com/company/szaboscandic) 

## Human M-CSF protein (active)

**Cat. No. GTX136909-pro**

<b>Application</b>	Functional Assay
<b>Species</b>	Human

**Package**  
100 µg

## PRODUCT

**Summary**

M-CSF (also known as CSF1) is a cytokine that functions in the survival, proliferation, and differentiation of hematopoietic precursor cells. This bioactive recombinant human M-CSF is the 34 kDa form consisting of a disulfide-linked homodimer of two 159 a.a. subunits. Human M-CSF is active in murine systems, though the reverse is not the case.

## APPLICATION

**Application Note**

The ED<sub>50</sub> was determined by a cell proliferation assay using murine M-NSF-60 cells cells is  $\leq 1$  ng/ml, corresponding to a specific activity of  $\geq 1 \times 10^6$  units/mg.

**Observed MW** 17|28 kDa.

## PROPERTIES

**Form** Lyophilized powder**Buffer** Reconstitute with distilled water to 0.1 mg/ml. Lyophilized from 50mM PBS, 100mM NaCl, 5% Trehalose.**Preservative** No Preservative**Storage** Store at 4°C or below. After reconstitution, keep as concentrated solution. Aliquot and store at -20°C or below. Avoid multiple freeze-thaw cycles. For long-term storage after reconstitution, aliquot and store at -70°C or below. Do not vortex.**Region/Sequence** Human full-length M-CSF protein (33-181 a.a. of NP\_000748.4, signal peptide removed)**Expression System** E. Coli**Purity** >98%**Endotoxin** < 1 EU/µg**Conjugation** Unconjugated**Note**

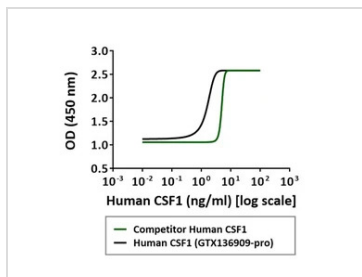
For laboratory research use only. Not for any clinical, therapeutic, or diagnostic use in humans or animals. Not for animal or human consumption.

Purchasers shall not, and agree not to enable third parties to, analyze, copy, reverse engineer or otherwise attempt to determine the structure or sequence of the product.



For full product information, images and publications, please visit our [website](#).

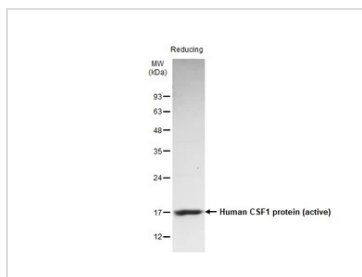
DATA IMAGES



**GTX136909-pro Functional Assay Image**

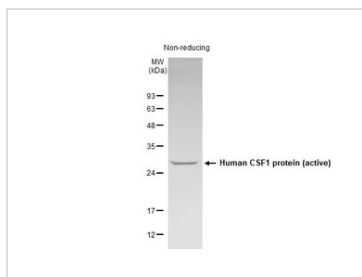
Serial dilutions of Human CSF1 protein (active) were added to murine M-NSF-60 cells. Cell proliferation was measured and the linear portion of the curve was used to calculate the ED50.

\*This product has been tested against the competitor and the biological activity is better than competitor.



**GTX136909-pro Image**

1 µg of GTX136909-pro Human M-CSF protein (active) was analyzed using SDS-PAGE under reducing and stained with coomassie blue and captured by monochrome camera.



**GTX136909-pro Image**

1 µg of GTX136909-pro Human M-CSF protein (active) was analyzed using SDS-PAGE under non-reducing and stained with coomassie blue and captured by monochrome camera.



For full product information, images and publications, please visit our [website](#).