



SZABO SCANDIC

Part of Europa Biosite

Produktinformation



Forschungsprodukte & Biochemikalien



Zellkultur & Verbrauchsmaterial



Diagnostik & molekulare Diagnostik



Laborgeräte & Service

Weitere Information auf den folgenden Seiten!
See the following pages for more information!



Lieferung & Zahlungsart

siehe unsere [Liefer- und Versandbedingungen](#)

Zuschläge

- Mindermengenzuschlag
- Trockeneiszuschlag
- Gefahrgutzuschlag
- Expressversand

SZABO-SCANDIC HandelsgmbH

Quellenstraße 110, A-1100 Wien

T. +43(0)1 489 3961-0

F. +43(0)1 489 3961-7

mail@szabo-scandic.com

www.szabo-scandic.com

[linkedin.com/company/szaboscandic](https://www.linkedin.com/company/szaboscandic) 

Human EGF protein (active)

Cat. No. GTX136910-pro

Application	Functional Assay
--------------------	------------------

Species	Human
----------------	-------

Package

500 µg

PRODUCT

Summary

Epidermal Growth Factor (EGF) is a 53-a.a. peptide cleaved from a 1207 a.a. transmembrane glycoprotein precursor. Its binding to the EGF receptor (EGFR) affects cell proliferation and differentiation via downstream effectors.

APPLICATION

Application Note

The determined ED50 is ≤ 0.1 ng/mL, which corresponds to a specific activity of $\geq 1 \times 10^7$ units/mg and is comparable to similar commercial products. The biological activity of this recombinant human EGF protein was analyzed using the BALB/c 3T3 Clone A31 mouse embryonic fibroblast cell proliferation assay (Rubin, J.S. et al. (1991)).

Observed MW	12 kDa.
--------------------	---------

PROPERTIES

Form	Lyophilized powder
-------------	--------------------

Buffer	Reconstitute with distilled water to 0.1 mg/ml. Lyophilized from 50mM PBS, 100mM NaCl, 5% Trehalose.
---------------	--

Preservative	No Preservative
---------------------	-----------------

Storage	Store at 4°C or below. After reconstitution, keep as concentrated solution. Aliquot and store at -20°C or below. Avoid multiple freeze-thaw cycles. For long-term storage after reconstitution, aliquot and store at -70°C or below. Do not vortex.
----------------	---

Region/Sequence	Mature human EGF protein (Asn971~Arg1023 of NP_001954.2)
------------------------	---

Expression System	E. Coli
--------------------------	---------

Purity	> 98%
---------------	-------

Endotoxin	< 0.1 EU/µg
------------------	-------------

Conjugation	Unconjugated
--------------------	--------------

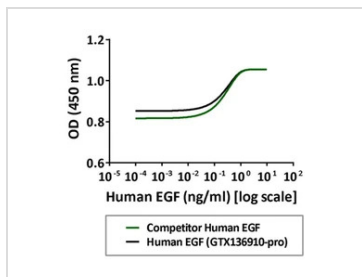
Note

For laboratory research use only. Not for any clinical, therapeutic, or diagnostic use in humans or animals. Not for animal or human consumption.

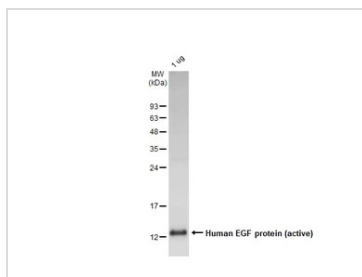
Purchasers shall not, and agree not to enable third parties to, analyze, copy, reverse engineer or otherwise attempt to determine the structure or sequence of the product.



For full product information, images and publications, please visit our [website](#).

DATA IMAGES

GTX136910-pro Functional Assay Image

Serial dilutions of Human EGF protein (active) were added to BALB/c 3T3 Clone A31 cells. Cell proliferation was measured and the linear portion of the curve was used to calculate the ED50.


GTX136910-pro Image

1 μ g of GTX136910-pro Human EGF protein (active) was analyzed using SDS-PAGE and stained with coomassie blue and captured by monochrome camera.



For full product information, images and publications, please visit our [website](#).