



SZABO SCANDIC

Part of Europa Biosite

Produktinformation



Forschungsprodukte & Biochemikalien



Zellkultur & Verbrauchsmaterial



Diagnostik & molekulare Diagnostik



Laborgeräte & Service

Weitere Information auf den folgenden Seiten!
See the following pages for more information!



Lieferung & Zahlungsart

siehe unsere [Liefer- und Versandbedingungen](#)

Zuschläge

- Mindermengenzuschlag
- Trockeneiszuschlag
- Gefahrgutzuschlag
- Expressversand

SZABO-SCANDIC HandelsgmbH

Quellenstraße 110, A-1100 Wien

T. +43(0)1 489 3961-0

F. +43(0)1 489 3961-7

mail@szabo-scandic.com

www.szabo-scandic.com

[linkedin.com/company/szaboscandic](https://www.linkedin.com/company/szaboscandic) 

Human LOXL2 protein, His tag

Cat No. GTX136930-pro**Species** Human**Package**
100 µg

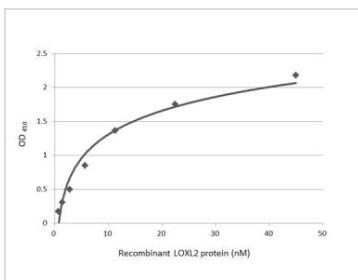
APPLICATION

Calculated MW 87 kDa. ([Note](#))

PROPERTIES

Form Liquid**Buffer** PBS**Preservative** No preservative**Storage** Store as concentrated solution. Centrifuge briefly prior to opening vial. For short-term storage (1-2 weeks), store at 4°C. For long-term storage, aliquot and store at -20°C or below. Avoid multiple freeze-thaw cycles.**Concentration** 0.1 mg/ml (Please refer to the vial label for the specific concentration.)**Region/Sequence** Full length Human LOXL2 (NP_002309) with a C-terminal His tag.**Expression System** HEK293 cells**Purity** >95%**Conjugation** Unconjugated**Note** For laboratory use only. Not for any clinical, therapeutic, or diagnostic use in humans or animals. Not for animal or human consumption.

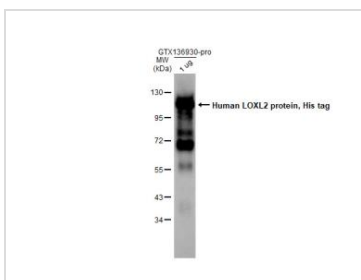
DATA IMAGES

**GTX136930-pro Image**

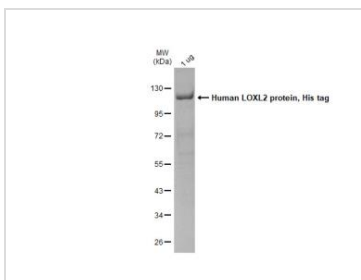
Indirect ELISA analysis was performed by coating the plate with recombinant Human LOXL2 protein, His tag (GTX136930-pro) (44.94-0.7 nM). Coated protein was probed with LOXL2 antibody (GTX105085) (1 µg/mL). Goat anti-rabbit IgG antibody (HRP) (GTX213110-01) (1:10000) was used to detect the bound primary antibody.



For full product information, images and publications, please visit our [website](#).


GTX136930-pro Image

Human LOXL2 protein, His tag (1 μ g, GTX136930-pro) was separated by 10% SDS-PAGE, and the membrane was blotted with LOXL2 antibody (GTX105085) diluted at 1:5000. The HRP-conjugated anti-rabbit IgG antibody (GTX213110-01) was used to detect the primary antibody.


GTX136930-pro Image

Human LOXL2 protein, His tag protein were analyzed using SDS-PAGE and stained with coomassie blue and captured by monochrome camera.



For full product information, images and publications, please visit our [website](#).