



SZABO SCANDIC

Part of Europa Biosite

Produktinformation



Forschungsprodukte & Biochemikalien



Zellkultur & Verbrauchsmaterial



Diagnostik & molekulare Diagnostik



Laborgeräte & Service

Weitere Information auf den folgenden Seiten!
See the following pages for more information!



Lieferung & Zahlungsart

siehe unsere [Liefer- und Versandbedingungen](#)

Zuschläge

- Mindermengenzuschlag
- Trockeneiszuschlag
- Gefahrgutzuschlag
- Expressversand

SZABO-SCANDIC HandelsgmbH

Quellenstraße 110, A-1100 Wien

T. +43(0)1 489 3961-0

F. +43(0)1 489 3961-7

mail@szabo-scandic.com

www.szabo-scandic.com

[linkedin.com/company/szaboscandic](https://www.linkedin.com/company/szaboscandic) 

SARS-CoV-2 (COVID-19) Spike RBD Protein, Omicron / BA.2.12.1 variant, His tag

Cat. No. GTX137249-pro

Application WB, ELISA, Sandwich ELISA

Species SARS Coronavirus 2

Package

100 µg

PROPERTIES

Form Liquid

Buffer PBS

Preservative No preservative

Storage Store as concentrated solution. Centrifuge briefly prior to opening vial. Aliquot and store at -20°C or below. Avoid multiple freeze-thaw cycles.

Concentration 0.68 mg/ml (Please refer to the vial label for the specific concentration.)

Region/Sequence SARS-CoV-2 Spike RBD of QHD43416.1 (319-541 a.a.) with G339D, S371F, S373P, S375F, T376A, D405N, R408S, K417N, N440K, L452Q, S477N, T478K, E484A, Q493R, Q498R, N501Y, Y505H and a C-terminal His tag.

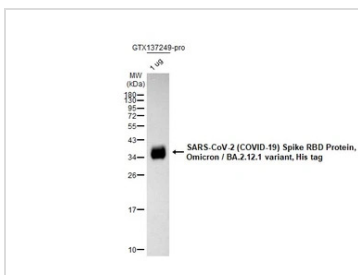
Expression System HEK293 cells

Purity >95%

Conjugation Unconjugated

Note For laboratory use only. Not for any clinical, therapeutic, or diagnostic use in humans or animals. Not for animal or human consumption.

DATA IMAGES

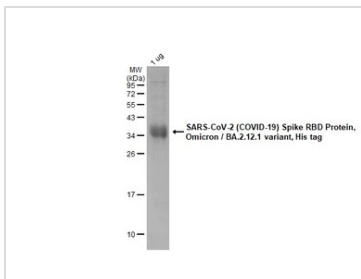


GTX137249-pro WB Image

SARS-CoV-2 (COVID-19) Spike RBD Protein, Omicron / BA.2.12.1 variant, His tag (1 µg, GTX137249-pro) were separated by 12% SDS-PAGE, and the membrane was blotted with SARS-CoV-2 (COVID-19) Spike RBD antibody [HL257] (GTX635692) diluted at 1:5000. The HRP-conjugated anti-rabbit IgG antibody (GTX213110-01) was used to detect the primary antibody.

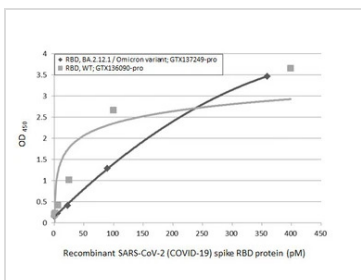


For full product information, images and publications, please visit our [website](https://www.genetex.com).



GTX137249-pro Image

GTX137249-pro SARS-CoV-2 (COVID-19) Spike RBD Protein, Omicron / BA.2.12.1 variant, His tag protein were analyzed using SDS-PAGE and stained with coomassie blue and captured by monochrome camera.

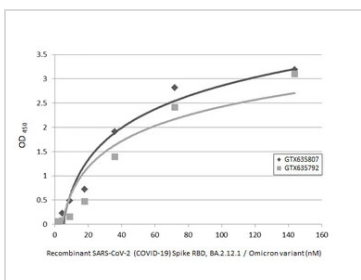


GTX137249-pro ELISA Image

Sandwich ELISA detection of recombinant Spike RBD Protein(s) derived from different strains of SARS-CoV-2 virus (ie., Wild type; BA.2.12.1 Omicron variant) using antibodies as below.

Capture: SARS-CoV-2 (COVID-19) Spike RBD antibody [HL1014] (GTX635807) (5 µg/mL)

Detection: SARS-CoV-2 (COVID-19) Spike RBD antibody [HL1003] (HRP) (GTX635792-01) (1 µg/mL)



GTX137249-pro ELISA Image

Indirect ELISA analysis was performed by coating the plate with recombinant SARS-CoV-2 (COVID-19) Spike RBD Protein, Omicron / BA.2.12.1 variant, His tag (GTX137249-pro) (143.68-2.24 nM). Coated protein was probed with the specified SARS-CoV-2 (COVID-19) Spike RBD antibodies (1 µg/mL). Goat anti-rabbit IgG antibody (HRP) (GTX213110-01) (1:10000) was used to detect the bound primary antibody.



For full product information, images and publications, please visit our [website](#).