



# SZABO SCANDIC

Part of Europa Biosite

## Produktinformation



Forschungsprodukte & Biochemikalien



Zellkultur & Verbrauchsmaterial



Diagnostik & molekulare Diagnostik



Laborgeräte & Service

Weitere Information auf den folgenden Seiten!  
See the following pages for more information!



### Lieferung & Zahlungsart

siehe unsere [Liefer- und Versandbedingungen](#)

### Zuschläge

- Mindermengenzuschlag
- Trockeneiszuschlag
- Gefahrgutzuschlag
- Expressversand

### SZABO-SCANDIC HandelsgmbH

Quellenstraße 110, A-1100 Wien

T. +43(0)1 489 3961-0

F. +43(0)1 489 3961-7

[mail@szabo-scandic.com](mailto:mail@szabo-scandic.com)

[www.szabo-scandic.com](http://www.szabo-scandic.com)

[linkedin.com/company/szaboscandic](https://www.linkedin.com/company/szaboscandic) 

## Human GM-CSF protein (active)

## Cat. No. GTX137974-pro

<b>Application</b>	Functional Assay
--------------------	------------------

<b>Species</b>	Human
----------------	-------

Package

100 µg

## PRODUCT

## Summary

GM-CSF, a colony stimulating factor also known as CSF2, mediates the proliferation, differentiation, and functions of hematopoietic precursor cells. This bioactive recombinant human GM-CSF is a 14.6 kDa globular protein formed by a 128 a.a. polypeptide with two intramolecular disulfide bonds and two potential N-linked glycosylation sites.

## APPLICATION

## Application Note

The ED<sub>50</sub> was determined by a cell proliferation assay using TF-1 cells is  $\leq 0.1$  ng/ml, corresponding to a specific activity of  $\geq 1 \times 10^7$  units/mg.

<b>Observed MW</b>	14 kDa.
--------------------	---------

## PROPERTIES

<b>Form</b>	Lyophilized powder
-------------	--------------------

<b>Buffer</b>	Reconstitute with distilled water to 0.1 mg/ml. Lyophilized from 50mM PBS, 100mM NaCl, 5% Trehalose.
---------------	--

<b>Preservative</b>	No Preservative
---------------------	-----------------

<b>Storage</b>	Store at 4°C or below. After reconstitution, keep as concentrated solution. Aliquot and store at -20°C or below. Avoid multiple freeze-thaw cycles. For long-term storage after reconstitution, aliquot and store at -70°C or below. Do not vortex.
----------------	---

<b>Region/Sequence</b>	Human full-length GM-CSF protein (18-144 a.a. of NP_000749.2, signal peptide removed)
------------------------	---

<b>Expression System</b>	E. Coli
--------------------------	---------

<b>Purity</b>	>98%
---------------	------

<b>Endotoxin</b>	< 1 EU/µg
------------------	-----------

<b>Conjugation</b>	Unconjugated
--------------------	--------------

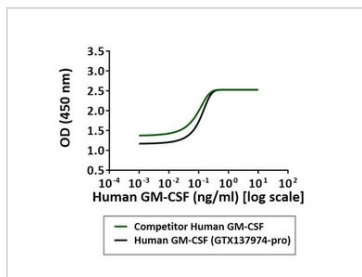
## Note

For laboratory research use only. Not for any clinical, therapeutic, or diagnostic use in humans or animals. Not for animal or human consumption.

Purchasers shall not, and agree not to enable third parties to, analyze, copy, reverse engineer or otherwise attempt to determine the structure or sequence of the product.

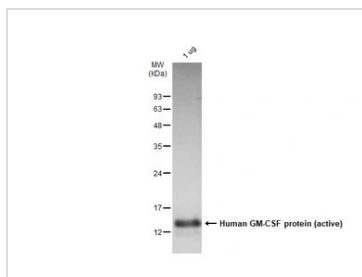


For full product information, images and publications, please visit our [website](#).

**DATA IMAGES**

**GTX137974-pro Functional Assay Image**

Serial dilutions of Human GM-CSF protein (active) were added to TF-1 cells. Cell proliferation was measured and the linear portion of the curve was used to calculate the ED50.

\*This product has been tested against the competitor and the biological activity is better than competitor.


**GTX137974-pro Image**

1µg of GTX137974-pro Human GM-CSF protein (active) was analyzed using SDS-PAGE and stained with coomassie blue and captured by monochrome camera.



For full product information, images and publications, please visit our [website](#).