



SZABO SCANDIC

Part of Europa Biosite

Produktinformation



Forschungsprodukte & Biochemikalien



Zellkultur & Verbrauchsmaterial



Diagnostik & molekulare Diagnostik



Laborgeräte & Service

Weitere Information auf den folgenden Seiten!
See the following pages for more information!



Lieferung & Zahlungsart

siehe unsere [Liefer- und Versandbedingungen](#)

Zuschläge

- Mindermengenzuschlag
- Trockeneiszuschlag
- Gefahrgutzuschlag
- Expressversand

SZABO-SCANDIC HandelsgmbH

Quellenstraße 110, A-1100 Wien

T. +43(0)1 489 3961-0

F. +43(0)1 489 3961-7

mail@szabo-scandic.com

www.szabo-scandic.com

[linkedin.com/company/szaboscandic](https://www.linkedin.com/company/szaboscandic) 

SARS-CoV-2 (COVID-19) Spike RBD Protein, Omicron / XBB variant, His tag

Cat. No. GTX138115-pro

Application	ELISA, Sandwich ELISA
Species	SARS Coronavirus 2

Package
100 µg

APPLICATION

Application Note

Recommended antibody pairs for sandwich ELISA: Capture : GTX635807, Detection : GTX635793-01 / GTX637591

PROPERTIES

Form	Liquid
Buffer	PBS, 2% Trehalose, 5% Mannitol, 0.01% Tween-80
Preservative	No preservative
Storage	Store as concentrated solution. Centrifuge briefly prior to opening vial. Aliquot and store at -20°C or below. Avoid multiple freeze-thaw cycles. For long-term storage after reconstitution, aliquot and store at -70°C or below. Do not vortex.
Concentration	0.4 mg/ml (Please refer to the vial label for the specific concentration.)
Region/Sequence	SARS-CoV-2 Spike RBD of QHD43416.1 (319-541 a.a.) with R346T, G339H, L368I, S371F, S373P, S375F, T376A, D405N, R408S, K417N, N440K, V445P, G446S, N460K, S477N, T478K, E484A, F486S, F490S, Q498R, N501Y, Y505H and a C-terminal His tag.
Expression System	HEK293 cells
Purity	>95%
Conjugation	Unconjugated

Note

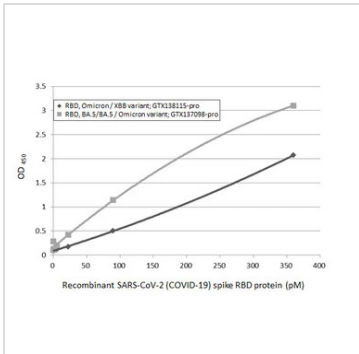
For laboratory research use only. Not for any clinical, therapeutic, or diagnostic use in humans or animals. Not for animal or human consumption.

Purchasers shall not, and agree not to enable third parties to, analyze, copy, reverse engineer or otherwise attempt to determine the structure or sequence of the product.



For full product information, images and publications, please visit our [website](#).

DATA IMAGES



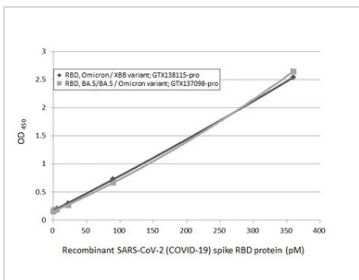
GTX138115-pro ELISA Image

Sandwich ELISA detection of recombinant Spike RBD Protein(s) derived from different strains of SARS-CoV-2 virus (ie., Wild type; BA.4/ BA.5 Omicron variant; Omicron / XBB variant) using antibodies as below.

Capture: SARS-CoV-2 (COVID-19) Spike RBD antibody [HL1014] (GTX635807) (5 µg/mL)

Detection: HRP-conjugated SARS-CoV-2 (COVID-19) Spike RBD Omicron antibody [HL1866] (GTX637591) (1 µg/mL)

Please notice that GTX637591 needs to be conjugated to HRP to function as the detection antibody when paired with GTX635807. Please contact us for custom HRP-conjugated antibody.

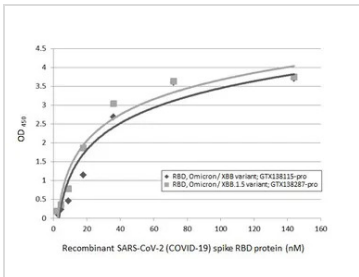


GTX138115-pro ELISA Image

Sandwich ELISA detection of recombinant Spike RBD Protein(s) derived from different strains of SARS-CoV-2 virus (ie., Wild type; BA.4/ BA.5 Omicron variant; Omicron / XBB variant) using antibodies as below.

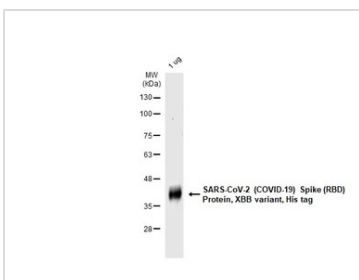
Capture: SARS-CoV-2 (COVID-19) Spike RBD antibody [HL1014] (GTX635807) (5 µg/mL)

Detection: SARS-CoV-2 (COVID-19) Spike RBD antibody [HL1004] (HRP) (GTX635793-01) (1 µg/mL)



GTX138115-pro ELISA Image

Indirect ELISA analysis was performed by coating the plate with recombinant Spike RBD Protein(s) derived from different strains of SARS-CoV-2 virus (ie., Omicron / XBB variant; Omicron / XBB.1.5 variant) (143.88-2.25 nM). Coated protein was probed with SARS-CoV-2 (COVID-19) Spike RBD antibody [HL1014] (GTX635807) (1 µg/mL). Goat anti-rabbit IgG antibody (HRP) (GTX213110-01) (1:10000) was used to detect the bound primary antibody.



GTX138115-pro Image

GTX138115-pro SARS-CoV-2 (COVID-19) Spike (RBD) Protein, XBB variant, His tag was analyzed using SDS-PAGE and stained with coomassie blue and captured by monochrome camera.



For full product information, images and publications, please visit our [website](#).