



SZABO SCANDIC

Part of Europa Biosite

Produktinformation



Forschungsprodukte & Biochemikalien



Zellkultur & Verbrauchsmaterial



Diagnostik & molekulare Diagnostik



Laborgeräte & Service

Weitere Information auf den folgenden Seiten!
See the following pages for more information!



Lieferung & Zahlungsart

siehe unsere [Liefer- und Versandbedingungen](#)

Zuschläge

- Mindermengenzuschlag
- Trockeneiszuschlag
- Gefahrgutzuschlag
- Expressversand

SZABO-SCANDIC HandelsgmbH

Quellenstraße 110, A-1100 Wien

T. +43(0)1 489 3961-0

F. +43(0)1 489 3961-7

mail@szabo-scandic.com

www.szabo-scandic.com

[linkedin.com/company/szaboscandic](https://www.linkedin.com/company/szaboscandic) 

Dengue virus type 1 NS1 protein, His tag

Cat. No. GTX138149-pro

Application	ELISA, Lateral Flow, Sandwich ELISA
Species	Dengue virus 1

Package
100 µg

APPLICATION

Application Note

Recommended antibody pairs for sandwich ELISA:

Capture : GTX639673 / GTX640511, Detection : GTX640511

Please notice that the detection antibody needs to be conjugated to HRP when paired with the capture antibody.

Please contact us for custom HRP-conjugated antibody.

Recommended antibody pairs for Lateral Flow:

Capture : GTX640510 / GTX640511, Detection : GTX640511

Observed MW 50 kDa.

PROPERTIES

Form	Lyophilized powder
Buffer	Reconstitute with distilled water to 0.3 mg/ml. Lyophilized from PBS, 2% Trehalose, 5% Mannitol, 0.01% Tween 80.
Preservative	No preservative
Storage	Store at 4°C or below. After reconstitution, keep as concentrated solution. Aliquot and store at -20°C or below. Avoid multiple freeze-thaw cycles. For long-term storage after reconstitution, aliquot and store at -70°C or below. Do not vortex.
Region/Sequence	C-terminal His tagged full-length Dengue virus type 1 NS1 protein (776-1127 a.a. of #ACF49259.1)
Expression System	HEK293 cells
Purity	>85%
Conjugation	Unconjugated

Note

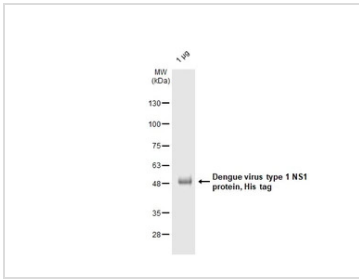
For laboratory research use only. Not for any clinical, therapeutic, or diagnostic use in humans or animals. Not for animal or human consumption.

Purchasers shall not, and agree not to enable third parties to, analyze, copy, reverse engineer or otherwise attempt to determine the structure or sequence of the product.



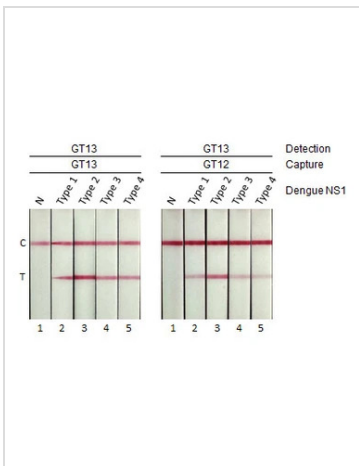
For full product information, images and publications, please visit our [website](#).

DATA IMAGES



GTX138149-pro Image

GTX138149-pro Dengue virus type 1 NS1 protein, His tag was analyzed using SDS-PAGE and stained with coomassie blue and captured by monochrome camera.



GTX138149-pro Lateral Flow Image

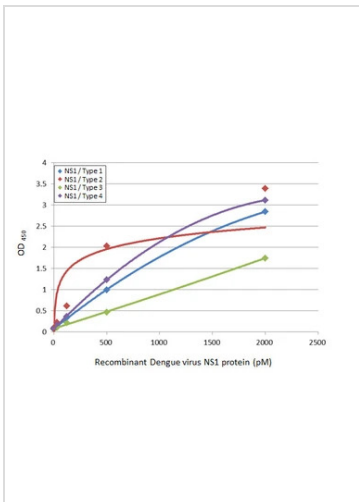
Detection of Dengue virus NS1 protein by lateral flow assay using the indicated recombinant mouse monoclonal antibodies.

GT12 : Dengue virus NS1 protein antibody [GT12] (GTX640510)

GT13 : Dengue virus NS1 protein antibody [GT13] (GTX640511)

Samples (40 ng) :

1. Running buffer (N)
2. Dengue virus type 1 NS1 protein (GTX138149-pro)
3. Dengue virus type 2 NS1 protein (GTX138150-pro)
4. Dengue virus type 3 NS1 protein
5. Dengue virus type 4 NS1 protein (GTX138152-pro)



GTX138149-pro ELISA Image

Sandwich ELISA detection of recombinant NS1 Protein(s) derived from different strains of Dengue virus (ie., Type 1; Type 2; Type 3; Type 4) using antibodies as below.

Capture: Dengue virus NS1 protein antibody [GT13] (GTX640511) (5 µg/mL)

Detection: HRP-conjugated Dengue virus NS1 protein antibody [GT13] (GTX640511) (1 µg/mL)

Please notice that GTX640511 needs to be conjugated to HRP to function as the detection antibody when paired with GTX640511. Please contact us for custom HRP-conjugated antibody.

Samples :

- NS1 / Type 1 : Dengue virus type 1 NS1 protein (GTX138149-pro)
- NS1 / Type 2 : Dengue virus type 2 NS1 protein (GTX138150-pro)
- NS1 / Type 3 : Dengue virus type 3 NS1 protein
- NS1 / Type 4 : Dengue virus type 4 NS1 protein (GTX138152-pro)



For full product information, images and publications, please visit our [website](#).