



SZABO SCANDIC

Part of Europa Biosite

Produktinformation



Forschungsprodukte & Biochemikalien



Zellkultur & Verbrauchsmaterial



Diagnostik & molekulare Diagnostik



Laborgeräte & Service

Weitere Information auf den folgenden Seiten!
See the following pages for more information!



Lieferung & Zahlungsart

siehe unsere [Liefer- und Versandbedingungen](#)

Zuschläge

- Mindermengenzuschlag
- Trockeneiszuschlag
- Gefahrgutzuschlag
- Expressversand

SZABO-SCANDIC HandelsgmbH

Quellenstraße 110, A-1100 Wien

T. +43(0)1 489 3961-0

F. +43(0)1 489 3961-7

mail@szabo-scandic.com

www.szabo-scandic.com

[linkedin.com/company/szaboscandic](https://www.linkedin.com/company/szaboscandic) 

SARS-CoV-2 (COVID-19) Spike RBD Protein, Omicron / XBB.1.5 variant, His tag

Cat. No. GTX138287-pro

Application	ELISA, Sandwich ELISA
Species	SARS Coronavirus 2

Package
100 µg

APPLICATION

Application Note

For Sandwich ELISA, we would recommend the following pairs :

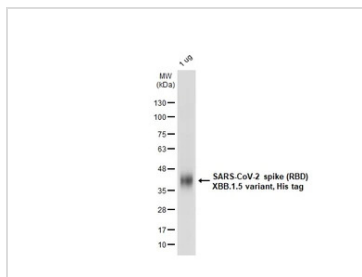
Capture : GTX635807, Detection : GTX637591.

Please notice that GTX637591 needs to be conjugated to HRP to function as the detection antibody when paired with GTX635807. Please contact us for custom HRP-conjugated antibody.

PROPERTIES

Form	Lyophilized powder
Buffer	Reconstitute with distilled water to 0.7 mg/ml. Lyophilized from PBS, 2% Trehalose, 5% Mannitol, 0.01% Tween-80.
Preservative	No Preservative
Storage	Store at 4°C or below. After reconstitution, keep as concentrated solution. Aliquot and store at -20°C or below. Avoid multiple freeze-thaw cycles. For long-term storage after reconstitution, aliquot and store at -70°C or below. Do not vortex.
Region/Sequence	SARS-CoV-2 Spike RBD of QHD43416.1 (319-541 a.a.) with R346T, G339H, L368I, S371F, S373P, S375F, T376A, D405N, R408S, K417N, N440K, V445P, G446S, N460K, S477N, T478K, E484A, F486P, F490S, Q498R, N501Y, Y505H and a C-terminal His tag.
Expression System	HEK293 cells
Purity	> 95%
Conjugation	Unconjugated
Note	For <i>In vitro</i> laboratory use only. Not for any clinical, therapeutic, or diagnostic use in humans or animals. Not for animal or human consumption.

DATA IMAGES

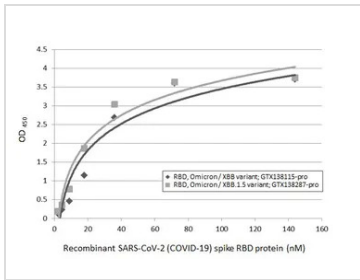


GTX138287-pro Image

GTX138287-pro SARS-CoV-2 spike (RBD) XBB.1.5 variant, His tag was analyzed using SDS-PAGE and stained with coomassie blue and captured by monochrome camera.

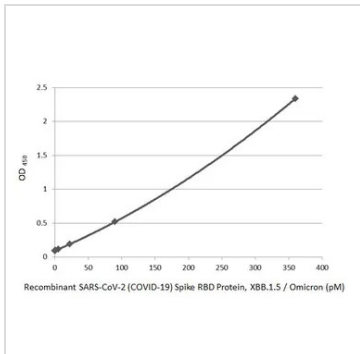


For full product information, images and publications, please visit our [website](#).



GTX138287-pro ELISA Image

Indirect ELISA analysis was performed by coating the plate with recombinant Spike RBD Protein(s) derived from different strains of SARS-CoV-2 virus (ie., Omicron / XBB variant; Omicron / XBB.1.5 variant) (143.88-2.25 nM). Coated protein was probed with SARS-CoV-2 (COVID-19) Spike RBD antibody [HL1014] (GTX635807) (1 µg/mL). Goat anti-rabbit IgG antibody (HRP) (GTX213110-01) (1:10000) was used to detect the bound primary antibody.



GTX138287-pro ELISA Image

Sandwich ELISA detection of recombinant SARS-CoV-2 (COVID-19) Spike RBD Protein, Omicron / XBB.1.5 variant, His tag (GTX138287-pro) using antibodies as below.

Capture: SARS-CoV-2 (COVID-19) Spike RBD antibody [HL1014] (GTX635807) (5 µg/mL)

Detection: HRP-conjugated SARS-CoV-2 (COVID-19) Spike RBD Omicron antibody [HL1866] (GTX637591) (1 µg/mL)

Please notice that GTX637591 needs to be conjugated to HRP to function as the detection antibody when paired with GTX635807. Please contact us for custom HRP-conjugated antibody.



For full product information, images and publications, please visit our [website](#).