



# SZABO SCANDIC

Part of Europa Biosite

## Produktinformation



Forschungsprodukte & Biochemikalien



Zellkultur & Verbrauchsmaterial



Diagnostik & molekulare Diagnostik



Laborgeräte & Service

Weitere Information auf den folgenden Seiten!  
See the following pages for more information!



### Lieferung & Zahlungsart

siehe unsere [Liefer- und Versandbedingungen](#)

### Zuschläge

- Mindermengenzuschlag
- Trockeneiszuschlag
- Gefahrgutzuschlag
- Expressversand

### SZABO-SCANDIC HandelsgmbH

Quellenstraße 110, A-1100 Wien

T. +43(0)1 489 3961-0

F. +43(0)1 489 3961-7

[mail@szabo-scandic.com](mailto:mail@szabo-scandic.com)

[www.szabo-scandic.com](http://www.szabo-scandic.com)

[linkedin.com/company/szaboscandic](https://www.linkedin.com/company/szaboscandic) 

## Human C Reactive Protein, His tag

**Cat. No. GTX138453-pro**

<b>Application</b>	ELISA
<b>Species</b>	Human

**Package**  
100 µg

## PRODUCT

## Summary

C-reactive protein, also known as PTX1, is a member of the pentraxin family and is involved in complement activation and regulation. C-reactive proteins are found as non-covalently associated globular subunits of the serum-soluble cyclic pentameric complex. This recombinant human C- reactive protein corresponds to the 27.75 kDa (224 a.a.) isoform 1 with an intrachain disulfide bond and no glycosylation modification (RefSeq: NP\_000558.2; UniProt ID: P02741). It is His-tagged at the C-terminus.

## PROPERTIES

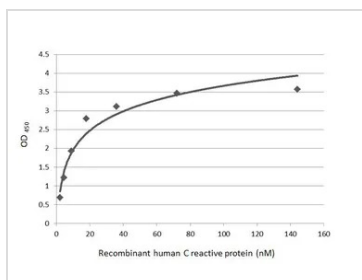
<b>Form</b>	Lyophilized powder
<b>Buffer</b>	Reconstitute with distilled water to 0.4 mg/ml. Lyophilized from PBS, 2% Trehalose, 5% Mannitol, 0.01% Tween-80.
<b>Preservative</b>	No Preservative
<b>Storage</b>	Store at 4°C or below. After reconstitution, keep as concentrated solution. Aliquot and store at -20°C or below. Avoid multiple freeze-thaw cycles. For long-term storage after reconstitution, aliquot and store at -70°C or below. Do not vortex.
<b>Region/Sequence</b>	C-terminal His tagged full-length Humans CRP protein (1-224aa of AAL48218.2)
<b>Expression System</b>	HEK293 cells
<b>Purity</b>	>95%
<b>Conjugation</b>	Unconjugated

## Note

For laboratory research use only. Not for any clinical, therapeutic, or diagnostic use in humans or animals. Not for animal or human consumption.

Purchasers shall not, and agree not to enable third parties to, analyze, copy, reverse engineer or otherwise attempt to determine the structure or sequence of the product.

## DATA IMAGES

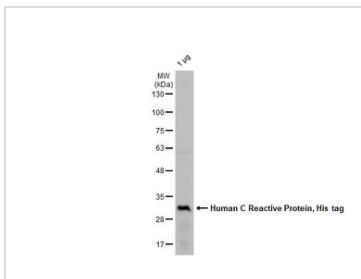


## GTX138453-pro ELISA Image

Indirect ELISA analysis was performed by coating the plate with recombinant Human C Reactive Protein, His tag (GTX138453-pro) (144.14-2.25 nM). Coated protein was probed with C Reactive Protein antibody [N1C3] (GTX101262) (1 µg/mL). Goat anti-rabbit IgG antibody (HRP) (GTX213110-01) (1:10000) was used to detect the bound primary antibody.



For full product information, images and publications, please visit our [website](#).


**GTX138453-pro Image**

GTX138453-pro Human C Reactive Protein, His tag was analyzed using SDS-PAGE and stained with coomassie blue and captured by monochrome camera.



For full product information, images and publications, please visit our [website](#).