



SZABO SCANDIC

Part of Europa Biosite

Produktinformation



Forschungsprodukte & Biochemikalien



Zellkultur & Verbrauchsmaterial



Diagnostik & molekulare Diagnostik



Laborgeräte & Service

Weitere Information auf den folgenden Seiten!
See the following pages for more information!



Lieferung & Zahlungsart

siehe unsere [Liefer- und Versandbedingungen](#)

Zuschläge

- Mindermengenzuschlag
- Trockeneiszuschlag
- Gefahrgutzuschlag
- Expressversand

SZABO-SCANDIC HandelsgmbH

Quellenstraße 110, A-1100 Wien

T. +43(0)1 489 3961-0

F. +43(0)1 489 3961-7

mail@szabo-scandic.com

www.szabo-scandic.com

[linkedin.com/company/szaboscandic](https://www.linkedin.com/company/szaboscandic) 

Enterovirus 71 VP1 protein, His tag

Cat. No. GTX138560-pro

Application	ELISA, Sandwich ELISA
Species	Enterovirus 71

Package

100 µg

APPLICATION

Application Note

Recommended antibody pairs for sandwich ELISA:

Capture : GTX637688, Detection : GTX637687

Please notice that GTX637687 needs to be conjugated to HRP to function as the detection antibody when paired with GTX637688. Please contact us for custom HRP-conjugated antibody.

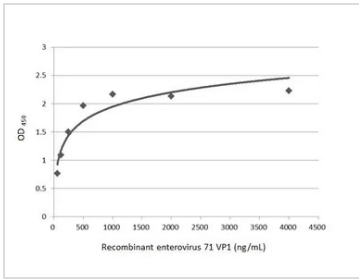
PROPERTIES

Form	Liquid
Buffer	PBS, 0.1% SDS
Preservative	No preservative
Storage	Store as concentrated solution. Centrifuge briefly prior to opening vial. Aliquot and store at -20°C or below. Avoid multiple freeze-thaw cycles. For long-term storage after reconstitution, aliquot and store at -70°C or below. Do not vortex.
Concentration	1 mg/ml (Please refer to the vial label for the specific concentration.)
Region/Sequence	N-terminal His Tagged full length Enterovirus 71 VP1 protein
Expression System	E. Coli
Purity	> 95%
Conjugation	Unconjugated
Note	For laboratory research use only. Not for any clinical, therapeutic, or diagnostic use in humans or animals. Not for animal or human consumption. Purchasers shall not, and agree not to enable third parties to, analyze, copy, reverse engineer or otherwise attempt to determine the structure or sequence of the product.



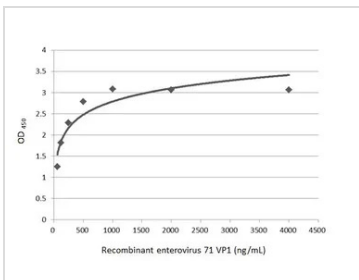
For full product information, images and publications, please visit our [website](#).

DATA IMAGES



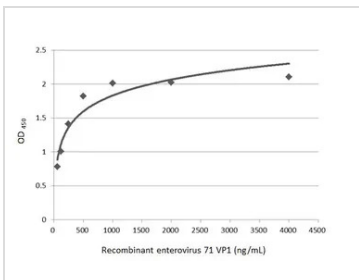
GTX138560-pro ELISA Image

Indirect ELISA analysis was performed by coating the plate with recombinant Enterovirus 71 VP1 protein, His tag (GTX138560-pro) (4000-62.5 ng/mL). Coated protein was probed with Enterovirus 71 VP1 antibody [GT185] (GTX633390) (1 µg/mL). Goat anti-mouse IgG antibody (HRP) (GTX213111-01) (1:10000) was used to detect the bound primary antibody.



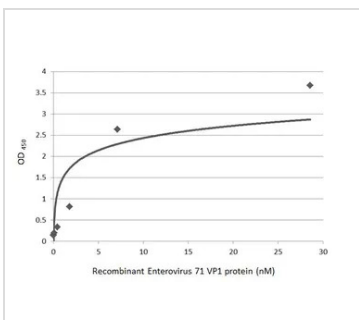
GTX138560-pro ELISA Image

Indirect ELISA analysis was performed by coating the plate with recombinant Enterovirus 71 VP1 protein, His tag (GTX138560-pro) (4000-62.5 ng/mL). Coated protein was probed with Enterovirus 71 VP1 antibody [HL1929] (GTX637688) (1 µg/mL). Goat anti-rabbit IgG antibody (HRP) (GTX213110-01) (1:10000) was used to detect the bound primary antibody.



GTX138560-pro ELISA Image

Indirect ELISA analysis was performed by coating the plate with recombinant Enterovirus 71 VP1 protein, His tag (GTX138560-pro) (4000-62.5 ng/mL). Coated protein was probed with Enterovirus 71 VP1 antibody [GT9512] (GTX633583) (1 µg/mL). Goat anti-mouse IgG antibody (HRP) (GTX213111-01) (1:10000) was used to detect the bound primary antibody.



GTX138560-pro ELISA Image

Sandwich ELISA detection of recombinant Enterovirus 71 VP1 protein, His tag (GTX138560-pro) using antibodies as below.

Capture: Enterovirus 71 VP1 antibody [HL1929] (GTX637688) (5 µg/mL)

Detection: HRP-conjugated Enterovirus 71 VP1 antibody [HL1928] (GTX637687) (1 µg/mL)

Please notice that GTX637687 needs to be conjugated to HRP to function as the detection antibody when paired with GTX637688. Please contact us for custom HRP-conjugated antibody.



For full product information, images and publications, please visit our [website](#).