



SZABO SCANDIC

Part of Europa Biosite

Produktinformation



Forschungsprodukte & Biochemikalien



Zellkultur & Verbrauchsmaterial



Diagnostik & molekulare Diagnostik



Laborgeräte & Service

Weitere Information auf den folgenden Seiten!
See the following pages for more information!



Lieferung & Zahlungsart

siehe unsere [Liefer- und Versandbedingungen](#)

Zuschläge

- Mindermengenzuschlag
- Trockeneiszuschlag
- Gefahrgutzuschlag
- Expressversand

SZABO-SCANDIC HandelsgmbH

Quellenstraße 110, A-1100 Wien

T. +43(0)1 489 3961-0

F. +43(0)1 489 3961-7

mail@szabo-scandic.com

www.szabo-scandic.com

[linkedin.com/company/szaboscandic](https://www.linkedin.com/company/szaboscandic)

Japanese encephalitis virus NS1 protein, His tag

Cat. No. GTX138915-pro

Species	Japanese encephalitis virus
----------------	-----------------------------

Package	100 µg
----------------	--------

APPLICATION

Observed MW	50 kDa.
--------------------	---------

PROPERTIES

Form	Lyophilized powder
-------------	--------------------

Buffer	Reconstitute with distilled water to 0.2 mg/ml. Lyophilized from PBS, 2% Trehalose, 5% Mannitol, 0.01% Tween-80.
---------------	--

Preservative	No Preservative
---------------------	-----------------

Storage	Store at 4°C or below. After reconstitution, keep as concentrated solution. Aliquot and store at -20°C or below. Avoid multiple freeze-thaw cycles. For long-term storage after reconstitution, aliquot and store at -70°C or below. Do not vortex.
----------------	---

Region/Sequence	C-terminal His tagged Japanese encephalitis virus NS1 protein (795-1146 a.a. of AAB18951.1)
------------------------	---

Expression System	HEK293 cells
--------------------------	--------------

Purity	>85%
---------------	------

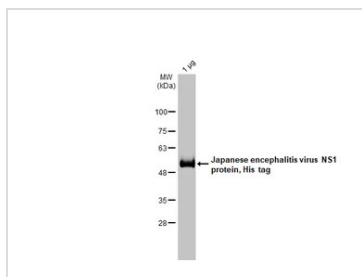
Conjugation	Unconjugated
--------------------	--------------

Note

For laboratory research use only. Not for any clinical, therapeutic, or diagnostic use in humans or animals. Not for animal or human consumption.

Purchasers shall not, and agree not to enable third parties to, analyze, copy, reverse engineer or otherwise attempt to determine the structure or sequence of the product.

DATA IMAGES

**GTX138915-pro Image**

GTX138915-pro Japanese encephalitis virus NS1 protein, His tag was analyzed using SDS-PAGE and stained with coomassie blue and captured by monochrome camera.



For full product information, images and publications, please visit our [website](#).