



# SZABO SCANDIC

Part of Europa Biosite

## Produktinformation



Forschungsprodukte & Biochemikalien



Zellkultur & Verbrauchsmaterial



Diagnostik & molekulare Diagnostik



Laborgeräte & Service

Weitere Information auf den folgenden Seiten!  
See the following pages for more information!



### Lieferung & Zahlungsart

siehe unsere [Liefer- und Versandbedingungen](#)

### Zuschläge

- Mindermengenzuschlag
- Trockeneiszuschlag
- Gefahrgutzuschlag
- Expressversand

### SZABO-SCANDIC HandelsgmbH

Quellenstraße 110, A-1100 Wien

T. +43(0)1 489 3961-0

F. +43(0)1 489 3961-7

[mail@szabo-scandic.com](mailto:mail@szabo-scandic.com)

[www.szabo-scandic.com](http://www.szabo-scandic.com)

[linkedin.com/company/szaboscandic](https://www.linkedin.com/company/szaboscandic) 

## West Nile virus NS1 protein, His tag

**Cat. No. GTX138916-pro****Species** West Nile virus**Package**  
100 µg

## APPLICATION

**Observed MW** 50 kDa.

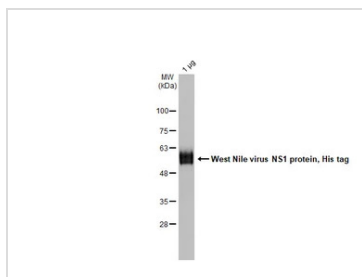
## PROPERTIES

**Form** Lyophilized powder**Buffer** Reconstitute with distilled water to 0.7 mg/ml. Lyophilized from PBS, 2% Trehalose, 5% Mannitol, 0.01% Tween-80.**Preservative** No Preservative**Storage** Store at 4°C or below. After reconstitution, keep as concentrated solution. Aliquot and store at -20°C or below. Avoid multiple freeze-thaw cycles. For long-term storage after reconstitution, aliquot and store at -70°C or below. Do not vortex.**Region/Sequence** C-terminal His tagged West Nile virus NS1 protein (792-1143 a.a. of ANW69204.1)**Expression System** HEK293 cells**Purity** >85%**Conjugation** Unconjugated**Note**

For laboratory research use only. Not for any clinical, therapeutic, or diagnostic use in humans or animals. Not for animal or human consumption.

Purchasers shall not, and agree not to enable third parties to, analyze, copy, reverse engineer or otherwise attempt to determine the structure or sequence of the product.

## DATA IMAGES

**GTX138916-pro Image**

GTX138916-pro West Nile virus NS1 protein, His tag was analyzed using SDS-PAGE and stained with coomassie blue and captured by monochrome camera.

For full product information, images and publications, please visit our [website](#).