



SZABO SCANDIC

Part of Europa Biosite

Produktinformation



Forschungsprodukte & Biochemikalien



Zellkultur & Verbrauchsmaterial



Diagnostik & molekulare Diagnostik



Laborgeräte & Service

Weitere Information auf den folgenden Seiten!
See the following pages for more information!



Lieferung & Zahlungsart

siehe unsere [Liefer- und Versandbedingungen](#)

Zuschläge

- Mindermengenzuschlag
- Trockeneiszuschlag
- Gefahrgutzuschlag
- Expressversand

SZABO-SCANDIC HandelsgmbH

Quellenstraße 110, A-1100 Wien

T. +43(0)1 489 3961-0

F. +43(0)1 489 3961-7

mail@szabo-scandic.com

www.szabo-scandic.com

[linkedin.com/company/szaboscandic](https://www.linkedin.com/company/szaboscandic)

Human IL5 protein, His tag

Cat. No. GTX139317-pro

Species Human**Package**
100 µg

APPLICATION

Observed MW 20 kDa.

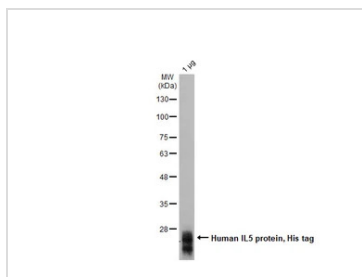
PROPERTIES

Form Lyophilized powder**Buffer** Reconstitute with distilled water to 1.5 mg/ml. Lyophilized from PBS, 2% Trehalose, 5% Mannitol, 0.01% Tween-80.**Preservative** No Preservative**Storage** Store at 4°C or below. After reconstitution, keep as concentrated solution. Aliquot and store at -20°C or below. Avoid multiple freeze-thaw cycles. For long-term storage after reconstitution, aliquot and store at -70°C or below. Do not vortex.**Region/Sequence** C-terminal His tagged Human IL5 protein (1-134 a.a. of NP_000870.1)**Expression System** HEK293 cells**Purity** >85%**Conjugation** Unconjugated**Note**

For laboratory research use only. Not for any clinical, therapeutic, or diagnostic use in humans or animals. Not for animal or human consumption.

Purchasers shall not, and agree not to enable third parties to, analyze, copy, reverse engineer or otherwise attempt to determine the structure or sequence of the product.

DATA IMAGES

**GTX139317-pro Image**

GTX139317-pro Human IL5 protein, His tag was analyzed using SDS-PAGE and stained with coomassie blue and captured by monochrome camera.

The predicted molecular weight determined by ESI-TOF is 13206.27 Da (+/- 10 Da by ESI-TOF). The observed MW is 13208.40 Da. Additional masses at 13411.42 Da and 13776.69 Da are observed due to residual O-glycans.



For full product information, images and publications, please visit our [website](#).