



# SZABO SCANDIC

Part of Europa Biosite

## Produktinformation



Forschungsprodukte & Biochemikalien



Zellkultur & Verbrauchsmaterial



Diagnostik & molekulare Diagnostik



Laborgeräte & Service

Weitere Information auf den folgenden Seiten!  
See the following pages for more information!



### Lieferung & Zahlungsart

siehe unsere [Liefer- und Versandbedingungen](#)

### Zuschläge

- Mindermengenzuschlag
- Trockeneiszuschlag
- Gefahrgutzuschlag
- Expressversand

### SZABO-SCANDIC HandelsgmbH

Quellenstraße 110, A-1100 Wien

T. +43(0)1 489 3961-0

F. +43(0)1 489 3961-7

[mail@szabo-scandic.com](mailto:mail@szabo-scandic.com)

[www.szabo-scandic.com](http://www.szabo-scandic.com)

[linkedin.com/company/szaboscandic](https://www.linkedin.com/company/szaboscandic) 

## Mouse IgG1 isotype control [MG1L]

**Cat No. GTX18173**

<b>Host</b>	Mouse
<b>Clonality</b>	Monoclonal
<b>Isotype</b>	IgG1
<b>Application</b>	WB, ICC/IF, FACS, ELISA

**Package**  
1 mg

## APPLICATION

**Application Note**

\*Optimal dilutions/concentrations should be determined by the researcher.

Suggested dilution	Dilution
WB	Assay dependent
ICC/IF	Assay dependent
FACS	1:1000-1:5000
ELISA	Assay dependent

Not tested in other applications.

**Specificity/Sensitivity**

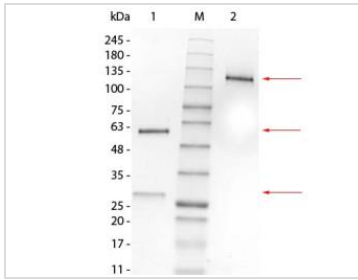
This antibody is non-reactive with antisera to mouse IgG2a, IgG2b, IgG3, IgM, and IgA. Assay by immunoelectrophoresis resulted in a single precipitin arc against anti-Mouse IgG and anti-Mouse serum. Light chain composition has been confirmed.

## PROPERTIES

<b>Form</b>	Liquid
<b>Buffer</b>	0.02 M Potassium Phosphate, 0.15 M Sodium Chloride pH 7.2, 0.01% (w/v) Sodium Azide
<b>Storage</b>	Store as concentrated solution. Centrifuge briefly prior to opening vial. For short-term storage (1-2 weeks), store at 4°C. For long-term storage, aliquot and store at -20°C or below. Avoid multiple freeze-thaw cycles.
<b>Concentration</b>	1 mg/ml (Please refer to the vial label for the specific concentration.)
<b>Purification</b>	Protein A purified From tissue culture supernatant
<b>Conjugation</b>	Unconjugated
<b>Note</b>	For laboratory use only. Not for any clinical, therapeutic, or diagnostic use in humans or animals. Not for animal or human consumption.



For full product information, images and publications, please visit our [website](#).

**DATA IMAGES**

**GTX18173 Image**

SDS-PAGE of Mouse IgG1 isotype control.

Lane 1 : Mouse IgG1 Lambda Isotype Control, Reduced

Lane M : Pre-stained Ladder

Lane 2 : Mouse IgG1 Lambda Isotype Control, Non-reduced

Loading : 1.0 µg per lane



For full product information, images and publications, please visit our [website](#).