



SZABO SCANDIC

Part of Europa Biosite

Produktinformation



Forschungsprodukte & Biochemikalien



Zellkultur & Verbrauchsmaterial



Diagnostik & molekulare Diagnostik



Laborgeräte & Service

Weitere Information auf den folgenden Seiten!
See the following pages for more information!



Lieferung & Zahlungsart

siehe unsere [Liefer- und Versandbedingungen](#)

Zuschläge

- Mindermengenzuschlag
- Trockeneiszuschlag
- Gefahrgutzuschlag
- Expressversand

SZABO-SCANDIC HandelsgmbH

Quellenstraße 110, A-1100 Wien

T. +43(0)1 489 3961-0

F. +43(0)1 489 3961-7

mail@szabo-scandic.com

www.szabo-scandic.com

[linkedin.com/company/szaboscandic](https://www.linkedin.com/company/szaboscandic) 

EAAT1 antibody

Cat. No. GTX18175

Host	Rabbit
Clonality	Polyclonal
Isotype	IgG
Application	WB, ICC/IF, FACS, IHC (Free Floating), LCI
Reactivity	Human, Mouse, Rat

Package
50 µl

APPLICATION

Application Note

*Optimal dilutions/concentrations should be determined by the researcher.

Suggested dilution	Recommended dilution
WB	Assay dependent
ICC/IF	Assay dependent
FACS	Assay dependent
IHC (Free Floating)	Assay dependent
LCI	Assay dependent

Not tested in other applications.

Calculated MW 60 kDa. ([Note](#))

PROPERTIES

Form	Liquid
Buffer	PBS pH7.4, 1% BSA
Preservative	0.05% Sodium azide
Storage	Store as concentrated solution. Centrifuge briefly prior to opening vial. For short-term storage (1-2 weeks), store at 4°C. For long-term storage, aliquot and store at -20°C or below. Avoid multiple freeze-thaw cycles.
Concentration	0.4 mg/ml (Please refer to the vial label for the specific concentration.)
Immunogen	Peptide (C)KQFKTSYEKRSFK, corresponding to amino acids 188-200 of rat EAAT1 (Accession P24942). 2nd extracellular loop.
Purification	Purified by antigen-affinity chromatography
Conjugation	Unconjugated



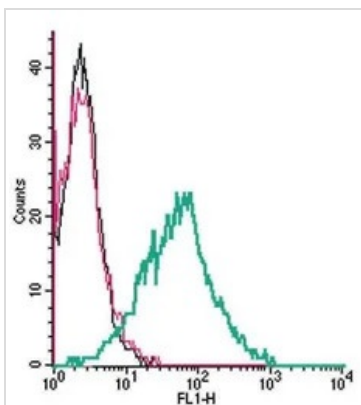
For full product information, images and publications, please visit our [website](#).

For laboratory research use only. Not for any clinical, therapeutic, or diagnostic use in humans or animals. Not for animal or human consumption.

Note

Purchasers shall not, and agree not to enable third parties to, analyze, copy, reverse engineer or otherwise attempt to determine the structure or sequence of the product.

DATA IMAGES



GTX18175 FACS Image

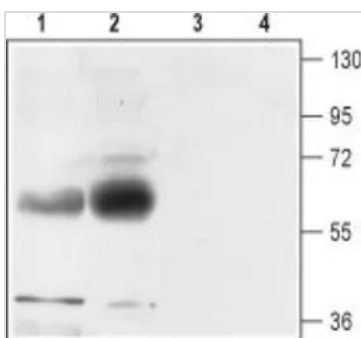
FACS analysis of live intact MEG-01 cells using GTX18175 EAAT1 antibody.

Black : Unstained cell

Red : Cell staining with isotype control antibody

Green : Cell staining with primary antibody

Antibody amount : 2.5 µg



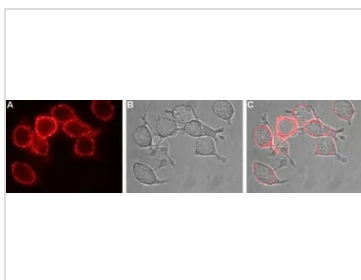
GTX18175 WB Image

WB analysis of rat (lanes 1 and 3) and mouse (lanes 2 and 4) brain membrane lysates using GTX18175 EAAT1 antibody.

Lane 1, 2 : Primary antibody

Lane 3, 4 : Primary antibody preincubated with immunogen peptide

Dilution : 1:500



GTX18175 LCI Image

Live cell imaging analysis of live intact U-87 MG cells using GTX18175 EAAT1 antibody.

Panel A : Primary antibody (Red)

Panel B : Live view of the cell

Panel C : Merged images of Panel A and B

Dilution : 1:100



For full product information, images and publications, please visit our [website](#).