



# SZABO SCANDIC

Part of Europa Biosite

## Produktinformation



Forschungsprodukte & Biochemikalien



Zellkultur & Verbrauchsmaterial



Diagnostik & molekulare Diagnostik



Laborgeräte & Service

Weitere Information auf den folgenden Seiten!  
See the following pages for more information!



### Lieferung & Zahlungsart

siehe unsere [Liefer- und Versandbedingungen](#)

### Zuschläge

- Mindermengenzuschlag
- Trockeneiszuschlag
- Gefahrgutzuschlag
- Expressversand

### SZABO-SCANDIC HandelsgmbH

Quellenstraße 110, A-1100 Wien

T. +43(0)1 489 3961-0

F. +43(0)1 489 3961-7

[mail@szabo-scandic.com](mailto:mail@szabo-scandic.com)

[www.szabo-scandic.com](http://www.szabo-scandic.com)

[linkedin.com/company/szaboscandic](https://www.linkedin.com/company/szaboscandic) 

## Reelin antibody [G10]

**Cat No. GTX18570**

<b>Host</b>	Mouse
<b>Clonality</b>	Monoclonal
<b>Isotype</b>	IgG1
<b>Application</b>	WB, IHC
<b>Reactivity</b>	Mouse, Rat

**Package**  
50 µg

## APPLICATION

**Application Note**

\*Optimal dilutions/concentrations should be determined by the researcher.

Suggested dilution	Dilution
WB	1:500
IHC	Assay dependent

Not tested in other applications.

**Calculated MW** 387 kDa. ([Note](#))

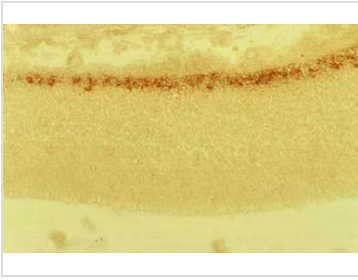
## PROPERTIES

<b>Form</b>	Liquid
<b>Buffer</b>	0.02 M PBS, 0.25 M NaCl, 0.1% sodium azide
<b>Storage</b>	Store as concentrated solution. Centrifuge briefly prior to opening vial. Store at 4°C.
<b>Concentration</b>	Batch dependent (Please refer to the vial label for the specific concentration.)
<b>Immunogen</b>	Recombinant fusion protein, corresponding to amino acids 164-496 of Mouse Reelin (derived from E15-E17 embryonic brain).
<b>Purification</b>	Protein A purified
<b>Conjugation</b>	Unconjugated
<b>Note</b>	For laboratory use only. Not for any clinical, therapeutic, or diagnostic use in humans or animals. Not for animal or human consumption.

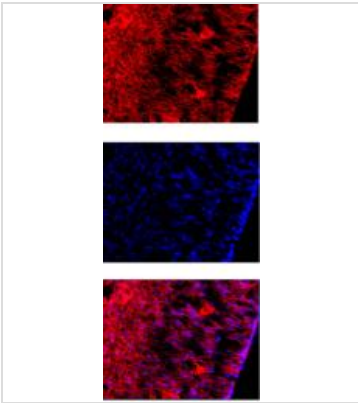


For full product information, images and publications, please visit our [website](#).

## DATA IMAGES

**GTX18570 IHC Image**

IHC analysis of embryonic cerebral cortex at 15 days in utero, with the pial surface above and the ventricle below using GTX18570 Reelin antibody [G10]. The positive zone is the Cajal-Retzius cell layer in the marginal zone.

**GTX18570 IHC Image**

IHC analysis of cortex of e14.5 mouse CNS using GTX18570 Reelin antibody [G10].

Red : Primary antibody

Blue : Hoechst nuclear counter stain



For full product information, images and publications, please visit our [website](#).