



SZABO SCANDIC

Part of Europa Biosite

Produktinformation



Forschungsprodukte & Biochemikalien



Zellkultur & Verbrauchsmaterial



Diagnostik & molekulare Diagnostik



Laborgeräte & Service

Weitere Information auf den folgenden Seiten!
See the following pages for more information!



Lieferung & Zahlungsart

siehe unsere [Liefer- und Versandbedingungen](#)

Zuschläge

- Mindermengenzuschlag
- Trockeneiszuschlag
- Gefahrgutzuschlag
- Expressversand

SZABO-SCANDIC HandelsgmbH

Quellenstraße 110, A-1100 Wien

T. +43(0)1 489 3961-0

F. +43(0)1 489 3961-7

mail@szabo-scandic.com

www.szabo-scandic.com

[linkedin.com/company/szaboscandic](https://www.linkedin.com/company/szaboscandic) 

EasyBlot anti Rabbit IgG (HRP)

Cat No. GTX221666-01

Application	WB
Reactivity	Rabbit

Reference (49)

★★★★★ Review (1)

Package

250 µl, 50 µl

PRODUCT

Summary

EasyBlot anti-Rabbit IgG is an HRP-conjugated second step reagent that specifically reacts with the native, non-reduced form of rabbit IgG and does not bind the reduced, denatured form. Using Easyblot decreases the interference caused by the heavy (~50 kDa) and light chains (~25 kDa) of the IgG used for immunoprecipitation (IP). EasyBlot is simple to use and results in Western Blot detection of only the target band in your IP experiments. Exercise caution when using Protein A/G for IP with EasyBlot. Protein A/G contaminants bind to rabbit IgG with high affinity and may cause contaminating bands with a molecular weight similar to IgG heavy chain or light chain.

To minimize background from Protein A/G contamination, we strongly recommend the use of EasyBlot Kit anti-Rabbit IgG (Optimized for Prot A/G) (GTXGTX225856-01) or EasyBlocker (GTX425858) to minimize protein A/G contamination or you can use anti-Rabbit IgG Agarose beads (GTX27019) instead of Protein A/G.

APPLICATION

Application Note

*Optimal dilutions/concentrations should be determined by the researcher.

Suggested dilution	Dilution
WB	1:1000

Note : Use 2-5 µg of the IP antibody; do not exceed 5 µg. Completely reduce all IP samples by 100mM DTT (fresh prepared). For further detail, please refer to the protocol.

Not tested in other applications.

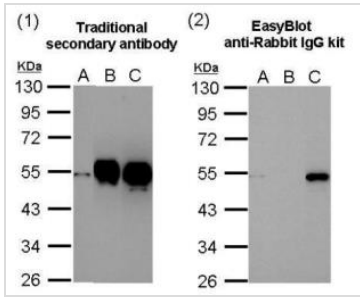
PROPERTIES

Form	Liquid
Buffer	0.05M Tris (pH7.4), 0.15M NaCl, 1%BSA, 40% Glycerol
Preservative	0.005% Thimerosal
Storage	Store as concentrated solution. Centrifuge briefly prior to opening vial. For short-term storage (1-2 weeks), store at 4°C. For long-term storage, aliquot and store at -20°C or below. Avoid multiple freeze-thaw cycles.
Concentration	0.318 mg/ml (Please refer to the vial label for the specific concentration.)
Purification	Affinity purified by Protein G.
Conjugation	Horseradish peroxidase(HRP)
Note	For laboratory use only. Not for any clinical, therapeutic, or diagnostic use in humans or animals. Not for animal or human consumption.



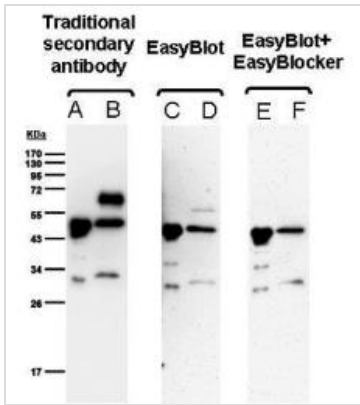
For full product information, images and publications, please visit our [website](#).

DATA IMAGES



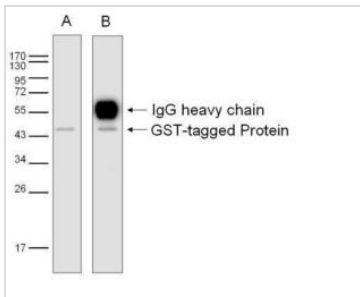
GTX221666-01 WB Image

Comparison of western blot analysis after immunoprecipitation with traditional secondary antibody (1) and EasyBlot anti-Rabbit IgG kit (GTX225856-01)(2). (A) Input, 20ug of HCT116 lysate. (B) and (C): HCT116 lysates were immunoprecipitated using 2.5 ug of normal rabbit IgG (B) or anti-p53 antibody (GTX102965) (C). The precipitated protein was detected by GTX102965 diluted at 1:10000.



GTX221666-01 WB Image

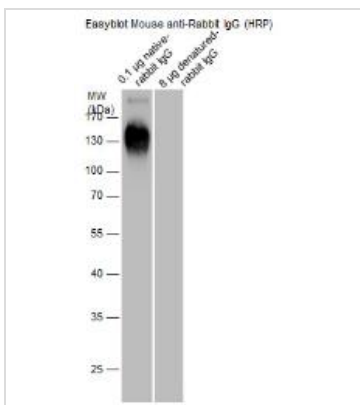
Comparison of western blot analysis after immunoprecipitation with traditional secondary antibody, EasyBlot anti-Rabbit IgG (HRP) (GTX221666-01) and EasyBlot anti-Rabbit IgG kit (GTX225856-01). A,C,and E: E. coli lysate with overexpressed GST-tagged protein B,D,and F: IP result IP and 1st antibody: anti-GST antibody



GTX221666-01 WB Image

GST-tagged protein (Mw: 45 kDa) was immunoprecipitated from E. coli lysate using 8 ug of anti-GST antibody (GTX110736). The precipitated protein was detected by GTX110736 diluted at 1:3000.

A: EasyBlot
B: Goat anti-rabbit antibody



GTX221666-01 WB Image

EasyBlot anti Rabbit IgG (HRP) antibody detects native-rabbit IgG by western blot analysis.Recombinant Protein (8 and 0.1 µg) was separated by 10% SDS-PAGE, and the membrane was blotted with EasyBlot anti Rabbit IgG (HRP) antibody (GTX221666-01) at a dilution of 1:5000.



For full product information, images and publications, please visit our [website](http://www.genetex.com).