



SZABO SCANDIC

Part of Europa Biosite

Produktinformation



Forschungsprodukte & Biochemikalien



Zellkultur & Verbrauchsmaterial



Diagnostik & molekulare Diagnostik



Laborgeräte & Service

Weitere Information auf den folgenden Seiten!
See the following pages for more information!



Lieferung & Zahlungsart

siehe unsere [Liefer- und Versandbedingungen](#)

Zuschläge

- Mindermengenzuschlag
- Trockeneiszuschlag
- Gefahrgutzuschlag
- Expressversand

SZABO-SCANDIC HandelsgmbH

Quellenstraße 110, A-1100 Wien

T. +43(0)1 489 3961-0

F. +43(0)1 489 3961-7

mail@szabo-scandic.com

www.szabo-scandic.com

[linkedin.com/company/szaboscandic](https://www.linkedin.com/company/szaboscandic) 

Furin antibody

Cat. No. GTX23467

Host	Rabbit
Clonality	Polyclonal
Isotype	IgG
Application	WB, ICC/IF, IP, IHC, Neutralizing/Inhibition
Reactivity	Human, Mouse, Rat, Dog, Hamster, Pig, Monkey

Package
100 µl

APPLICATION

Application Note

*Optimal dilutions/concentrations should be determined by the researcher.

Suggested dilution	Recommended dilution
WB	1:500-1:2,000
ICC/IF	2 µg/mL
IP	1:100
IHC	Assay dependent
Neutralizing/Inhibition	Assay dependent

Not tested in other applications.

Calculated MW 87 kDa. ([Note](#))

PROPERTIES

Form	Liquid
Buffer	PBS, 1 mg/ml BSA
Preservative	0.05% sodium azide
Storage	Store as concentrated solution. Centrifuge briefly prior to opening vial. For short-term storage (1-2 weeks), store at 4°C. For long-term storage, aliquot and store at -20°C or below. Avoid multiple freeze-thaw cycles.
Concentration	2 mg/ml (Please refer to the vial label for the specific concentration.)
Immunogen	Synthetic peptide: RGERAFIKDQSAL, corresponding to amino acids 780-793 of Human Furin Convertase.
Purification	Purified by antigen-affinity chromatography
Conjugation	Unconjugated



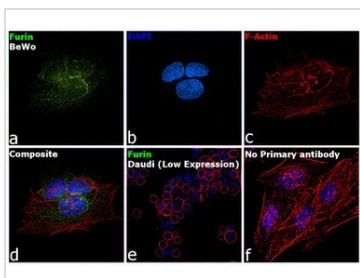
For full product information, images and publications, please visit our [website](#).

For laboratory research use only. Not for any clinical, therapeutic, or diagnostic use in humans or animals. Not for animal or human consumption.

Note

Purchasers shall not, and agree not to enable third parties to, analyze, copy, reverse engineer or otherwise attempt to determine the structure or sequence of the product.

DATA IMAGES

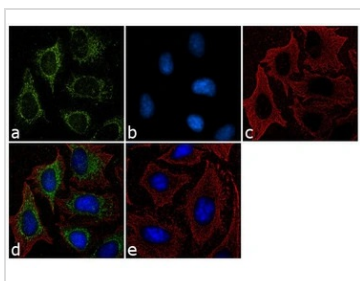


GTX23467 ICC/IF Image

ICC/IF analysis of 4% paraformaldehyde-fixed BeWo cells using GTX23467 Furin antibody. Panel d represents the merged image showing predominantly Golgi Complex and cytoplasmic localization. Panel e represents Daudi cells with lower expression of Furin (DOI: 10.1099/0022-1317-75-10-2821). Panel f represents control cells with no primary antibody to assess the background.

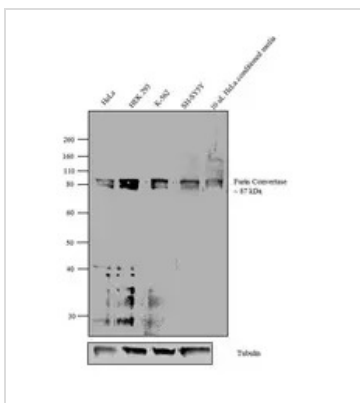
Permeabilization : 0.1% Triton™ X-100 for 15 minutes

Dilution : 2 µg/mL in 0.1% BSA, incubated at 4°C overnight



GTX23467 ICC/IF Image

ICC/IF analysis of methanol-fixed HeLa cells using GTX23467 Furin antibody. Panel d represents the merged image showing cytoplasmic localization. Panel e shows the no primary antibody control. The images were captured at 60X magnification.



GTX23467 WB Image

WB analysis of various sample lysates using GTX23467 Furin antibody.

Dilution : 1:500

Loading : 30µg



For full product information, images and publications, please visit our [website](#).