



SZABO SCANDIC

Part of Europa Biosite

Produktinformation



Forschungsprodukte & Biochemikalien



Zellkultur & Verbrauchsmaterial



Diagnostik & molekulare Diagnostik



Laborgeräte & Service

Weitere Information auf den folgenden Seiten!
See the following pages for more information!



Lieferung & Zahlungsart

siehe unsere [Liefer- und Versandbedingungen](#)

Zuschläge

- Mindermengenzuschlag
- Trockeneiszuschlag
- Gefahrgutzuschlag
- Expressversand

SZABO-SCANDIC HandelsgmbH

Quellenstraße 110, A-1100 Wien

T. +43(0)1 489 3961-0

F. +43(0)1 489 3961-7

mail@szabo-scandic.com

www.szabo-scandic.com

[linkedin.com/company/szaboscandic](https://www.linkedin.com/company/szaboscandic) 

Goat Anti-Rabbit IgG antibody, pre-adsorbed (Cy2)

Cat. No. GTX26940

Host	Goat
Clonality	Polyclonal
Isotype	IgG
Application	WB, ICC/IF, FACS, ELISA
Reactivity	Rabbit

Package
100 µg

APPLICATION

Application Note

*Optimal dilutions/concentrations should be determined by the researcher.

Suggested dilution	Recommended dilution
WB	Assay dependent
ICC/IF	1:1,000 - 1:5,000
FACS	1:500 - 1:2,500
ELISA	1:10,000 - 1:50,000

Not tested in other applications.

Product Note

This antibody has been pre-adsorbed against Bovine, Chicken, Goat, Guinea Pig, Horse, Human, Mouse, Rat and Sheep serum proteins to ensure minimal cross-reactivity. Cross-reactivity with other species, however, is possible.

PROPERTIES

Form	Liquid
Buffer	0.02M Potassium Phosphate, 0.15M NaCl, 1% BSA
Preservative	0.01% Sodium azide
Storage	Store as concentrated solution. Centrifuge briefly prior to opening vial. For short-term storage (1-2 weeks), store at 4°C. For long-term storage, aliquot and store at -20°C or below. Avoid multiple freeze-thaw cycles. Protect from light.
Concentration	1 mg/ml (Please refer to the vial label for the specific concentration.)
Immunogen	Rabbit IgG whole molecule
Purification	IgG fraction
Conjugation	Cyanine2 (Cy2)



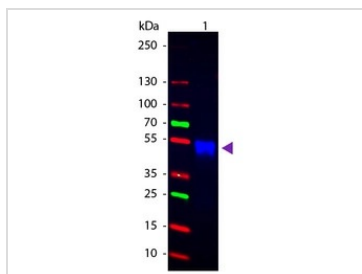
For full product information, images and publications, please visit our [website](#).

For laboratory research use only. Not for any clinical, therapeutic, or diagnostic use in humans or animals. Not for animal or human consumption.

Note

Purchasers shall not, and agree not to enable third parties to, analyze, copy, reverse engineer or otherwise attempt to determine the structure or sequence of the product.

DATA IMAGES

**GTX26940 WB Image**

GTX26940 Rabbit IgG antibody, pre-adsorbed (Cy2) detects rabbit IgG by Western Blot analysis.

1. 50 ng rabbit IgG

GTX26940 Rabbit IgG antibody, pre-adsorbed (Cy2) dilution: 1:1000



For full product information, images and publications, please visit our [website](#).