



SZABO SCANDIC

Part of Europa Biosite

Produktinformation



Forschungsprodukte & Biochemikalien



Zellkultur & Verbrauchsmaterial



Diagnostik & molekulare Diagnostik



Laborgeräte & Service

Weitere Information auf den folgenden Seiten!
See the following pages for more information!



Lieferung & Zahlungsart

siehe unsere [Liefer- und Versandbedingungen](#)

Zuschläge

- Mindermengenzuschlag
- Trockeneiszuschlag
- Gefahrgutzuschlag
- Expressversand

SZABO-SCANDIC HandelsgmbH

Quellenstraße 110, A-1100 Wien

T. +43(0)1 489 3961-0

F. +43(0)1 489 3961-7

mail@szabo-scandic.com

www.szabo-scandic.com

[linkedin.com/company/szaboscandic](https://www.linkedin.com/company/szaboscandic) 

GTX300112

Fluorescent Protein Antibody Panel

Product Content

Cat No	Product Name	Reactivity	Application	Package
GTX128508	mCherry antibody		WB, ICC/IF, IHC-Fr, IHC-Wm, IP, PLA	10 µl
GTX628528	GFP antibody [GT859]		WB, ICC/IF, IHC-P, IHC-Fr, IHC-Wm, IP, ELISA, Sandwich ELISA	10 µl
GTX628545	RFP antibody [GT1610]		WB, ICC/IF, IP	10 µl

Note

For In vitro laboratory use only. Not for any clinical, therapeutic, or diagnostic use in humans or animals. Not for animal or human consumption.



For full product information, images and publications, please visit our [website](#).

mCherry antibody

Cat. No. GTX128508

Host	Rabbit
Clonality	Polyclonal
Isotype	IgG
Application	WB, ICC/IF, IHC-Fr, IHC-Wm, IP, PLA

Reference (49)

★★★★★ Review (10)

Package

100 µl, 25 µl

APPLICATION

Application Note

*Optimal dilutions/concentrations should be determined by the researcher.

Suggested dilution	Recommended dilution
WB	1:1000-1:10000
ICC/IF	1:100-1:1000
IHC-Fr	Assay dependent
IHC-Wm	1:100-1:500
IP	1:100-1:500
PLA	Assay dependent

Not tested in other applications.

Calculated MW 27 kDa. ([Note](#))

PROPERTIES

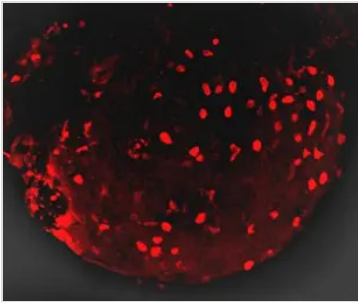
Form	Liquid
Buffer	1XPBS (pH7), 1% BSA, 20% Glycerol
Preservative	0.025% ProClin 300
Storage	Store as concentrated solution. Centrifuge briefly prior to opening vial. For short-term storage (1-2 weeks), store at 4°C. For long-term storage, aliquot and store at -20°C or below. Avoid multiple freeze-thaw cycles.
Concentration	0.22 mg/ml (Please refer to the vial label for the specific concentration.)
Immunogen	Full length mCherry recombinant protein
Purification	Purified by antigen-affinity chromatography.
Conjugation	Unconjugated

For full product information, images and publications, please visit our [website](#).

For laboratory research use only. Not for any clinical, therapeutic, or diagnostic use in humans or animals. Not for animal or human consumption.

Note
 Purchasers shall not, and agree not to enable third parties to, analyze, copy, reverse engineer or otherwise attempt to determine the structure or sequence of the product.

DATA IMAGES

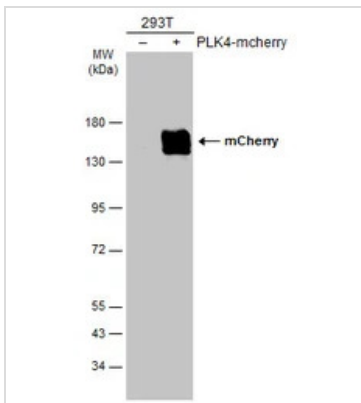


GTX128508 IHC-Wm Image

mCherry antibody labels mCherry-expressing cells on zebrafish embryos by whole mount immunohistochemical analysis.

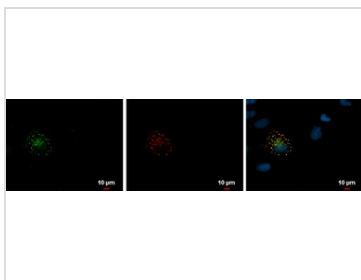
Sample: 2 days-post-fertilization zebrafish embryo.

mCherry antibody labels mCherry-expressing cells (GTX128508) dilution: 1:100.



GTX128508 WB Image

Non-transfected (-) and transfected (+) 293T whole cell extracts (30 µg) were separated by 7.5% SDS-PAGE, and the membrane was blotted with mCherry antibody (GTX128508) diluted at 1:5000. The HRP-conjugated anti-rabbit IgG antibody (GTX213110-01) was used to detect the primary antibody.



GTX128508 ICC/IF Image

mCherry antibody detects mCherry protein at mCherry fusion protein by immunofluorescent analysis.

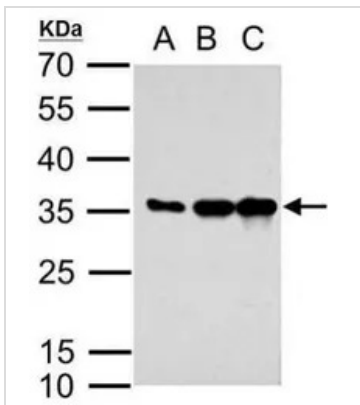
Sample: mCherry fusion protein-transfected HeLa cells were fixed in 4% paraformaldehyde at RT for 30 min, then Triton X-100 for 1 min.

Green: mCherry protein stained by mCherry antibody (GTX128508) diluted at 1:500.

Red: mCherry is expressed in the transfected cell . Blue: Hoechst 33342 staining.



For full product information, images and publications, please visit our [website](#).



GTX128508 WB Image

mCherry antibody detects mCherry (full length) protein by western blot analysis.

A. 5ng recombinant mCherry

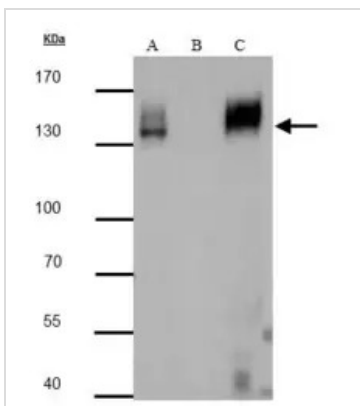
B. 10ng recombinant mCherry

C. 20ng recombinant mCherry

12% SDS-PAGE

mCherry antibody (GTX128508) dilution: 1:2000

The HRP-conjugated anti-rabbit IgG antibody (GTX213110-01) was used to detect the primary antibody.



GTX128508 IP Image

mcherry antibody immunoprecipitates mcherry protein in IP experiments. IP Sample: 293T whole cell

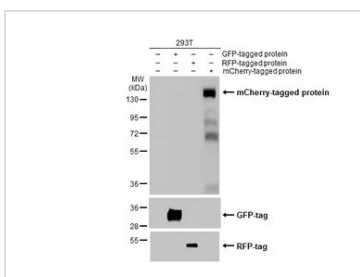
lysate/extract A : 20 µg whole cell lysate/extract of mcherry protein expressing 293T cells B : Control with

2.5 µg of pre-immune rabbit IgG C : Immunoprecipitation of mcherry protein by 2.5 µg of mcherry

antibody (GTX128508) 7.5% SDS-PAGE The immunoprecipitated mcherry protein was detected by mcherry

antibody (GTX128508) diluted at 1 : 3000. EasyBlot anti-rabbit IgG (HRP) (GTX221666-01) was used as a

secondary reagent.



GTX128508 WB Image

Non-transfected (-) and transfected (+) 293T whole cell extracts (30 µg) were separated by gradient gel%

SDS-PAGE, and the membrane was blotted with mCherry antibody (GTX128508) diluted at 1:10000. The

HRP-conjugated anti-rabbit IgG antibody (GTX213110-01) was used to detect the primary antibody.



For full product information, images and publications, please visit our [website](#).

GFP antibody [GT859]

Cat. No. GTX628528

Host	Mouse
Clonality	Monoclonal
Isotype	IgG2b
Application	WB, ICC/IF, IHC-P, IHC-Fr, IHC-Wm, IP, ELISA, Sandwich ELISA

Reference (29)

★★★★★ Review (10)

Package

100 µl, 25 µl

APPLICATION

Application Note

*Optimal dilutions/concentrations should be determined by the researcher.

Suggested dilution	Recommended dilution
WB	1:1000-1:10000
ICC/IF	1:100-1:2000
IHC-P	Assay dependent
IHC-Fr	Assay dependent
IHC-Wm	Assay dependent
IP	1:100-1:500
ELISA	1:1000-1:10000
Sandwich ELISA	Assay dependent

Note : Capture: GTX628528 , Detection: GTX113617

Not tested in other applications.

Product Note This antibody reacts with GFP variants including GFP, EGFP, and YFP.

PROPERTIES

Form	Liquid
Buffer	PBS
Preservative	No Preservative
Storage	Store as concentrated solution. Centrifuge briefly prior to opening vial. For short-term storage (1-2 weeks), store at 4°C. For long-term storage, aliquot and store at -20°C or below. Avoid multiple freeze-thaw cycles.
Concentration	0.25 mg/ml (Please refer to the vial label for the specific concentration.)
Immunogen	Full length GFP recombinant protein
Purification	Affinity purified by Protein A. From tissue culture supernatant

For full product information, images and publications, please visit our [website](#).

Conjugation

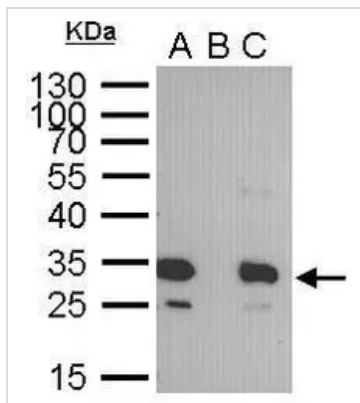
Unconjugated

Note

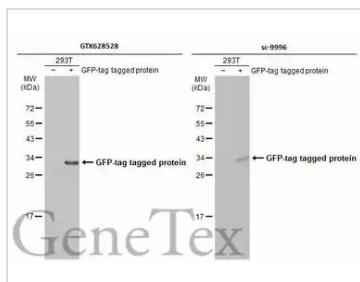
For laboratory research use only. Not for any clinical, therapeutic, or diagnostic use in humans or animals. Not for animal or human consumption.

Purchasers shall not, and agree not to enable third parties to, analyze, copy, reverse engineer or otherwise attempt to determine the structure or sequence of the product.

DATA IMAGES

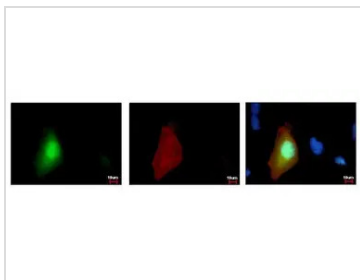
**GTX628528 IP Image**

GFP tag antibody immunoprecipitates GFP-fused protein in IP experiments. IP Sample: 400 µg cell lysate/extract of GFP-fused gene transfected 293T cells A. 30 µg lysate/extract of transfected 293T cell B. Control with 2 µg of preimmune mouse IgG C. Immunoprecipitation of GFP-fused protein by 2 µg of GFP tag antibody (GTX628528) 12% SDS-PAGE The immunoprecipitated GFP-fused protein was detected by GFP tag antibody (GTX628528) diluted at 1:1000. EasyBlot anti-mouse IgG (GTX221667-01) was used as a secondary reagent.

**GTX628528 WB Image**

Non-transfected (-) and transfected (+) 293T whole cell extracts (5 µg) were separated by 12% SDS-PAGE, and the membranes were blotted with GFP antibody [GT859] (GTX628528) diluted at 1:5000 and competitor's antibody (sc-9996) diluted at 1:5000. The HRP-conjugated anti-mouse IgG antibody (GTX213111-01) was used to detect the primary antibody.

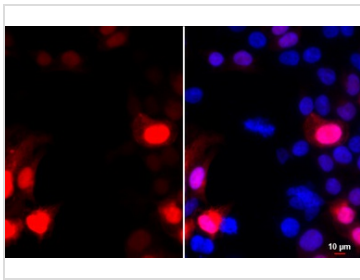
*The competitor is not affiliated with GeneTex and does not endorse this product.

**GTX628528 ICC/IF Image**

GFP-tag antibody detects GFP-recombinant protein by immunofluorescent analysis. Sample: GFP-tag transfected HeLa cells were fixed in 4% paraformaldehyde at RT for 15 min. Green: GFP is expressed in the transfected cell Red: GFP-recombinant protein stained by GFP-tag antibody (GTX628528) diluted at 1:2000. Blue: Hoechst 33342 staining.



For full product information, images and publications, please visit our [website](#).



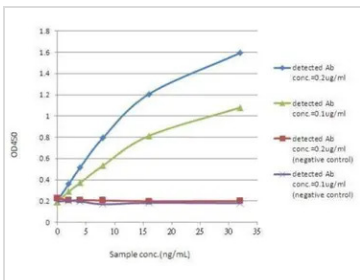
GTX628528 ICC/IF Image

GFP antibody [GT859] detects GFP protein by immunofluorescent analysis.

Sample: GFP-tag tagged protein transfected 293T cells were fixed in 4% paraformaldehyde at RT for 15 min.

Red: GFP stained by GFP antibody [GT859] (GTX628528) diluted at 1:2000.

Blue: Hoechst 33342 staining.



GTX628528 ELISA Image

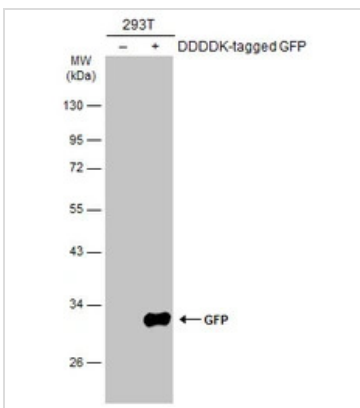
ELISA detection of GFP using GTX628528 for capture and GTX113617 for detection.

Coating Ab: mouse anti-GFP (GTX628528, 2µg/well)

Sample: GFP protein

Detected Ab: rabbit anti-GFP (GTX113617)

Conjugated Ab: goat anti-rabbit IgG-HRP (GTX213110-01, 1:20000)



GTX628528 WB Image

Non-transfected (-) and transfected (+) 293T whole cell extracts (5 µg) were separated by 5% SDS-PAGE, and the membrane was blotted with GFP antibody [GT859] (GTX628528) diluted at 1:5000. The HRP-conjugated anti-mouse IgG antibody (GTX213111-01) was used to detect the primary antibody.



For full product information, images and publications, please visit our [website](#).

RFP antibody [GT1610]

Cat. No. GTX628545

Host	Mouse
Clonality	Monoclonal
Isotype	IgG2a
Application	WB, ICC/IF, IP

Package
100 µl, 25 µl

APPLICATION

Application Note

*Optimal dilutions/concentrations should be determined by the researcher.

Suggested dilution	Recommended dilution
WB	1:500-1:3000
ICC/IF	1:100-1:1000
IP	1:500-1:1000

Not tested in other applications.

Calculated MW 27 kDa. ([Note](#))

PROPERTIES

Form Liquid

Buffer PBS

Preservative No Preservative

Storage Store as concentrated solution. Centrifuge briefly prior to opening vial. For short-term storage (1-2 weeks), store at 4°C. For long-term storage, aliquot and store at -20°C or below. Avoid multiple freeze-thaw cycles.

Concentration 1.05 mg/ml (Please refer to the vial label for the specific concentration.)

Immunogen Recombinant protein conjugated synthetic peptide encompassing a sequence within the center region of RFP. The exact sequence is proprietary.

Purification Affinity purified by Protein G.

Conjugation Unconjugated

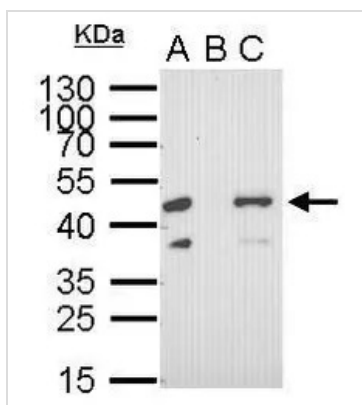
Note For laboratory research use only. Not for any clinical, therapeutic, or diagnostic use in humans or animals. Not for animal or human consumption.

Purchasers shall not, and agree not to enable third parties to, analyze, copy, reverse engineer or otherwise attempt to determine the structure or sequence of the product.



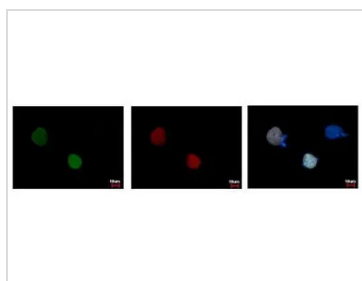
For full product information, images and publications, please visit our [website](#).

DATA IMAGES



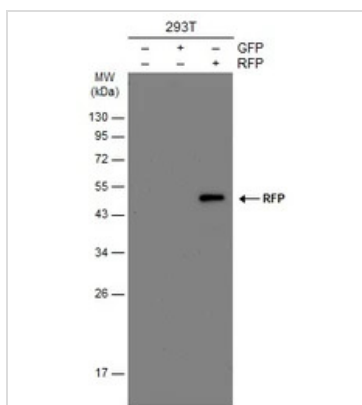
GTX628545 IP Image

RFP tag antibody immunoprecipitates RFP-fused protein in IP experiments. IP Sample: 400 µg cell lysate/extract of RFP-fused gene transfected 293T cells A. 30 µg lysate/extract of transfected 293T cell B. Control with 2 µg of preimmune mouse IgG C. Immunoprecipitation of RFP-fused protein by 2 µg of RFP tag antibody (GTX628545) 12% SDS-PAGE The immunoprecipitated RFP-fused protein was detected by RFP tag antibody (GTX628545) diluted at 1:1000. EasyBlot anti-mouse IgG (GTX221667-01) was used as a secondary reagent.



GTX628545 ICC/IF Image

RFP-tag antibody detects RFP-recombinant protein by immunofluorescent analysis. Sample: RFP-tag transfected HeLa cells were fixed in 4% paraformaldehyde at RT for 15 min. Green: RFP-recombinant protein stained by RFP-tag antibody (GTX628545) diluted at 1:2000. Red: RFP is expressed in the transfected cell. Blue: Hoechst 33342 staining.



GTX628545 WB Image

Non-transfected (-) and transfected (+) 293T whole cell extracts (30 µg) were separated by 12% SDS-PAGE, and the membrane was blotted with RFP antibody [GT1610] (GTX628545) diluted at 1:10000. The HRP-conjugated anti-mouse IgG antibody (GTX213111-01) was used to detect the primary antibody.



For full product information, images and publications, please visit our [website](#).