



# SZABO SCANDIC

Part of Europa Biosite

## Produktinformation



Forschungsprodukte & Biochemikalien



Zellkultur & Verbrauchsmaterial



Diagnostik & molekulare Diagnostik



Laborgeräte & Service

Weitere Information auf den folgenden Seiten!  
See the following pages for more information!



### Lieferung & Zahlungsart

siehe unsere [Liefer- und Versandbedingungen](#)

### Zuschläge

- Mindermengenzuschlag
- Trockeneiszuschlag
- Gefahrgutzuschlag
- Expressversand

### SZABO-SCANDIC HandelsgmbH

Quellenstraße 110, A-1100 Wien

T. +43(0)1 489 3961-0

F. +43(0)1 489 3961-7

[mail@szabo-scandic.com](mailto:mail@szabo-scandic.com)

[www.szabo-scandic.com](http://www.szabo-scandic.com)

[linkedin.com/company/szaboscandic](https://www.linkedin.com/company/szaboscandic) 

GTX300113

## Tag Antibody Panel (with positive control)

## Product Content

Cat No	Product Name	Reactivity	Application	Package
GTX130342-pro	Multiple Tags Positive Control ( 6xHis-MBP-DDDDK-V5-HSV-HA-T7-Myc-S)			5 µg
GTX628489	HA tag antibody [GT423]		WB, ICC/IF, IP	10 µl
GTX628914	6X His tag antibody [GT359]		WB, ICC/IF, IP, ELISA	10 µl

## Note

For In vitro laboratory use only. Not for any clinical, therapeutic, or diagnostic use in humans or animals. Not for animal or human consumption.



For full product information, images and publications, please visit our [website](#).

## Multiple Tags Positive Control ( 6xHis-MBP-DDDDK-V5-HSV-HA-T7-Myc-S)

Cat. No. GTX130342-pro

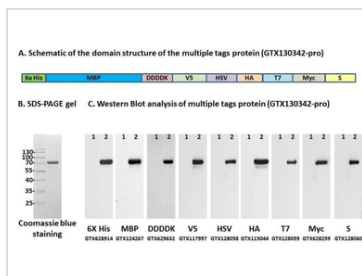
Package

100 µg, 25 µg

## PROPERTIES

<b>Form</b>	Liquid
<b>Buffer</b>	1X SDS-PAGE sample loading buffer
<b>Preservative</b>	No Preservative
<b>Storage</b>	Store as concentrated solution. Centrifuge briefly prior to opening vial. Aliquot and store at -20°C or below. Avoid multiple freeze-thaw cycles.
<b>Concentration</b>	Batch dependent (Please refer to the vial label for the specific concentration.)
<b>Expression System</b>	E. coli
<b>Purity</b>	> 90%
<b>Conjugation</b>	Unconjugated
<b>Note</b>	For In vitro laboratory use only. Not for any clinical, therapeutic, or diagnostic use in humans or animals. Not for animal or human consumption.

## DATA IMAGES



## GTX130342-pro Image

Lane1: 1 µg of negative control

Lane2: 1 µg of multiple tags positive control (GTX130342-pro) blots were probed with various GeneTex's Tag antibodies and then probed with goat polyclonal secondary antibody to rabbit IgG - H&L (HRP) (GTX213110-01) or goat polyclonal secondary antibody to mouse IgG - H&L (HRP) (GTX213111-01).



For full product information, images and publications, please visit our [website](#).

## HA tag antibody [GT423]

**Cat. No. GTX628489**

<b>Host</b>	Mouse
<b>Clonality</b>	Monoclonal
<b>Isotype</b>	IgG2b
<b>Application</b>	WB, ICC/IF, IP

Reference ( 10 )

 Review ( 6 )

Package

100 µl, 25 µl

## APPLICATION

**Application Note**

\*Optimal dilutions/concentrations should be determined by the researcher.

Suggested dilution	Recommended dilution
WB	1:1000-1:10000
ICC/IF	1:100-1:2000
IP	1:100-1:500

Not tested in other applications.

## PROPERTIES

<b>Form</b>	Liquid
<b>Buffer</b>	PBS
<b>Preservative</b>	No Preservative
<b>Storage</b>	Store as concentrated solution. Centrifuge briefly prior to opening vial. For short-term storage (1-2 weeks), store at 4°C. For long-term storage, aliquot and store at -20°C or below. Avoid multiple freeze-thaw cycles.
<b>Concentration</b>	1 mg/ml (Please refer to the vial label for the specific concentration.)
<b>Immunogen</b>	The immunogen used to generate this antibody corresponds to HA tag
<b>Purification</b>	Affinity purified by Protein G.
<b>Conjugation</b>	Unconjugated

**Note**

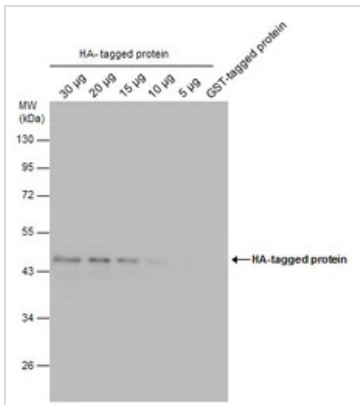
For laboratory research use only. Not for any clinical, therapeutic, or diagnostic use in humans or animals. Not for animal or human consumption.

Purchasers shall not, and agree not to enable third parties to, analyze, copy, reverse engineer or otherwise attempt to determine the structure or sequence of the product.



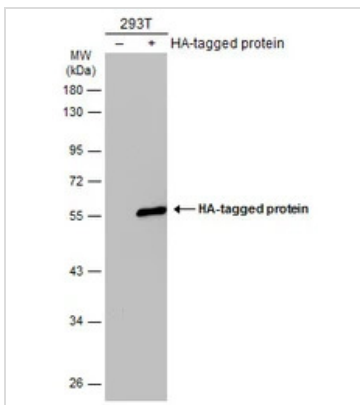
For full product information, images and publications, please visit our [website](#).

DATA IMAGES



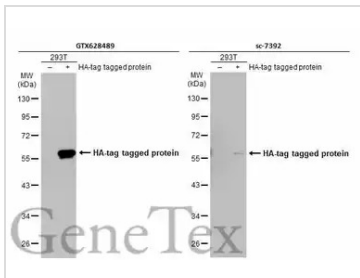
**GTX628489 WB Image**

HA tag antibody [GT423] detects HA tag protein by western blot analysis. HA tag-transfected and GST tag-transfected (30 µg) 293T whole cell extracts were separated by 10% SDS-PAGE, and the membrane was blotted with HA tag antibody [GT423] (GTX628489) diluted at 1:5000. The HRP-conjugated anti-mouse IgG antibody (GTX213111-01) was used to detect the primary antibody.



**GTX628489 WB Image**

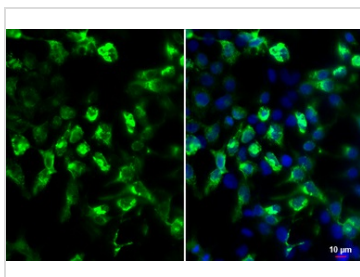
Non-transfected (-) and transfected (+) 293T whole cell extracts (30 µg) were separated by 10% SDS-PAGE, and the membrane was blotted with HA tag antibody [GT423] (GTX628489) diluted at 1:5000. The HRP-conjugated anti-mouse IgG antibody (GTX213111-01) was used to detect the primary antibody.



**GTX628489 WB Image**

Non-transfected (-) and transfected (+) 293T whole cell extracts (30 µg) were separated by 10% SDS-PAGE, and the membranes were blotted with HA tag antibody [GT423] (GTX628489) diluted at 1:5000 and competitor's antibody (sc-7392) diluted at 1:5000. The HRP-conjugated anti-mouse IgG antibody (GTX213111-01) was used to detect the primary antibody.

\*The competitor is not affiliated with GeneTex and does not endorse this product.

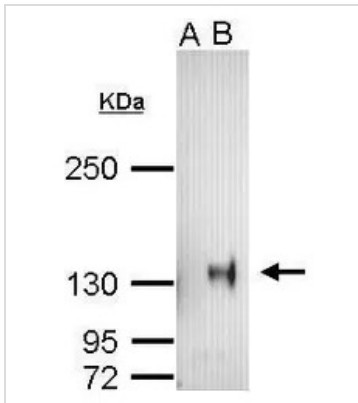


**GTX628489 ICC/IF Image**

HA tag antibody [GT423] detects HA protein by immunofluorescent analysis. Sample: HA-tag tagged protein transfected 293T cells were fixed in 4% paraformaldehyde at RT for 15 min. Green: HA stained by HA tag antibody [GT423] (GTX628489) diluted at 1:2000. Blue: Hoechst 33342 staining.



For full product information, images and publications, please visit our [website](#).

**GTX628489 IP Image**

HA tag antibody [GT423] immunoprecipitates HA-HIF-1 $\alpha$  protein in IP experiments.

IP Sample: 400  $\mu$ g cell lysate/extract of HA-HIF-1 $\alpha$  transfected 293T cells

A. Control with 2  $\mu$ g of preimmune mouse IgG

B. Immunoprecipitation of HA-fused protein by 2  $\mu$ g of HA tag antibody [GT423] (GTX628489)

5% SDS-PAGE

The immunoprecipitated HA-HIF1 $\alpha$  protein was detected by HIF-1 $\alpha$  antibody (GTX127309) diluted at 1:1000.



For full product information, images and publications, please visit our [website](#).

## 6X His tag antibody [GT359]

**Cat. No. GTX628914**

<b>Host</b>	Mouse
<b>Clonality</b>	Monoclonal
<b>Isotype</b>	IgG3
<b>Application</b>	WB, ICC/IF, IP, ELISA

Reference ( 44 )

 Review ( 5 )

Package

100 µl, 25 µl

## APPLICATION

**Application Note**

\*Optimal dilutions/concentrations should be determined by the researcher.

Suggested dilution	Recommended dilution
WB	1:1000-1:10000
ICC/IF	1:100-1:2000
IP	1:100-1:500
ELISA	1:1000-1:10000

Not tested in other applications.

## PROPERTIES

<b>Form</b>	Liquid
<b>Buffer</b>	1XPBS (pH7), 20% Glycerol
<b>Preservative</b>	No Preservative
<b>Storage</b>	Store as concentrated solution. Centrifuge briefly prior to opening vial. For short-term storage (1-2 weeks), store at 4°C. For long-term storage, aliquot and store at -20°C or below. Avoid multiple freeze-thaw cycles.
<b>Concentration</b>	1.76 mg/ml (Please refer to the vial label for the specific concentration.)
<b>Immunogen</b>	The immunogen used to generate this antibody corresponds to 6X His tag
<b>Purification</b>	Affinity purified by Protein G.
<b>Conjugation</b>	Unconjugated

**Note**

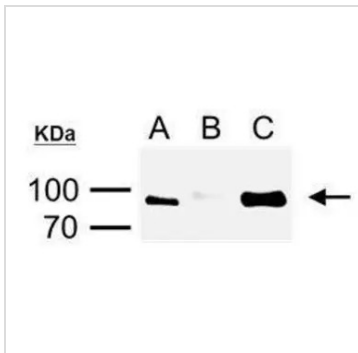
For laboratory research use only. Not for any clinical, therapeutic, or diagnostic use in humans or animals. Not for animal or human consumption.

Purchasers shall not, and agree not to enable third parties to, analyze, copy, reverse engineer or otherwise attempt to determine the structure or sequence of the product.



For full product information, images and publications, please visit our [website](#).

## DATA IMAGES

**GTX628914 IP Image**

6X His tag antibody [GT359] immunoprecipitates His-fused protein in IP experiments.

IP Sample: cell lysate/extract of His-fused gene transfected HeLa cells

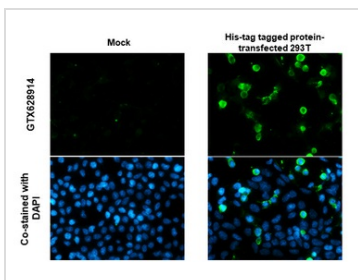
A. 1/20 lysate/extract of transfected HeLa cells

B. Control with 2  $\mu$ g of preimmune mouse IgG

C. Immunoprecipitation of His-fused protein by 2  $\mu$ g of 6X His tag antibody [GT359] (GTX628914)

12% SDS-PAGE

The immunoprecipitated His-fused protein was detected by 6X His tag antibody [GT359] (GTX628914) diluted at 1:1000.

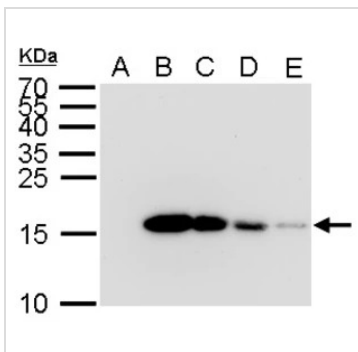
**GTX628914 ICC/IF Image**

6X His tag antibody [GT359] detects 6X His tag protein by immunofluorescent analysis.

Sample: Mock and transfected 293T cells were fixed in 4% paraformaldehyde at RT for 15 min.

Green: 6X His tag stained by 6X His tag antibody [GT359] (GTX628914) diluted at 1:1000.

Blue: Fluoroshield with DAPI (GTX30920).

**GTX628914 WB Image**

6x His antibody detects 6x His protein by Western blot analysis.

A. 2  $\mu$ g GST-recombinant protein

B. 2  $\mu$ g His-recombinant protein

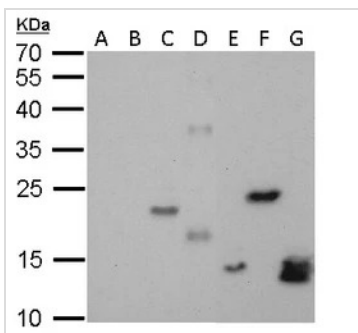
C. 1  $\mu$ g His-recombinant protein

D. 0.5  $\mu$ g His-recombinant protein E. 0.1  $\mu$ g His-recombinant protein

E. 0.1  $\mu$ g His-recombinant protein E. 0.1  $\mu$ g His-recombinant protein

12 % SDS-PAGE

6x His antibody (GTX628914) dilution: 1:5000

**GTX628914 WB Image**

6x His antibody detects 6x His protein by Western blot analysis.

Lane A and B were IPTG-induced cell lysate from E. coli expressing different GST-tagged proteins.

Lane C to G were IPTG induced cell lysate from E. coli expressing different His-tagged protein.

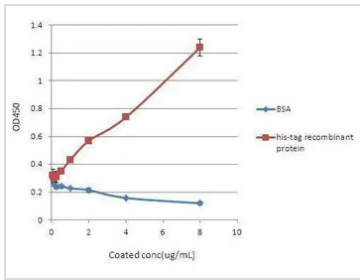
12 % SDS-PAGE

6x His antibody (GTX628914) dilution: 1:5000



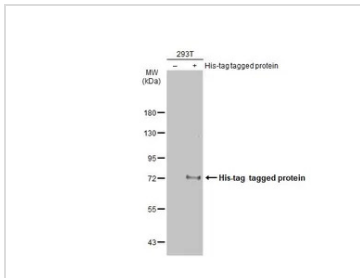
For full product information, images and publications, please visit our [website](#).





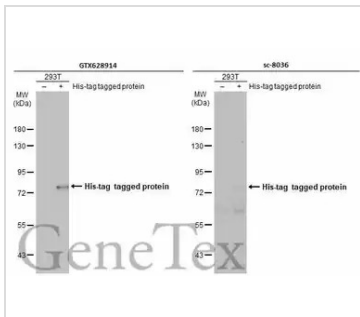
**GTX628914 ELISA Image**

6X His tag antibody [GT359] detects His-tagged recombinant proteins by indirect ELISA analysis. Various dilutions of His-tagged recombinant proteins coated onto the 96-well plate were detected by using 0.5 µg/ml 6X His tag antibody [GT359] (GTX628914). Bound Abs were further detected by using HRP-conjugated goat anti-mouse IgG (GTX213111-01) with HRP substrates.



**GTX628914 WB Image**

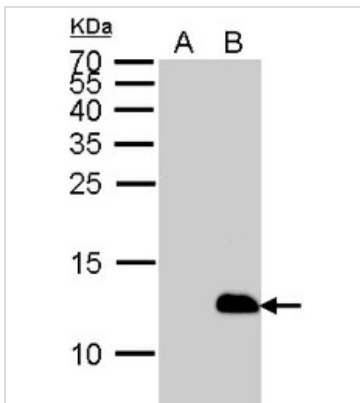
Non-transfected (-) and transfected (+) 293T whole cell extracts (30 µg) were separated by 7.5% SDS-PAGE, and the membrane was blotted with 6X His tag antibody [GT359] (GTX628914) diluted at 1:5000. The HRP-conjugated anti-mouse IgG antibody (GTX213111-01) was used to detect the primary antibody.



**GTX628914 WB Image**

Non-transfected (-) and transfected (+) 293T whole cell extracts (30 µg) were separated by 7.5% SDS-PAGE, and the membranes were blotted with 6X His tag antibody [GT359] (GTX628914) diluted at 1:1000 and competitor's antibody (sc-8036) diluted at 1:5000. The HRP-conjugated anti-mouse IgG antibody (GTX213111-01) was used to detect the primary antibody, and the signal was developed with Trident ECL plus-Enhanced.

\*The competitor is not affiliated with GeneTex and does not endorse this product.



**GTX628914 WB Image**

6x His antibody detects 6x His protein by Western blot analysis.  
 A. Non-induced cell lysates from E. coli expressing HIS-tagged proteins  
 B. IPTG-induced cell lysates from E. coli expressing HIS-tagged proteins  
 15 % SDS-PAGE  
 6x His antibody (GTX628914) dilution: 1:5000



For full product information, images and publications, please visit our [website](#).