



SZABO SCANDIC

Part of Europa Biosite

Produktinformation



Forschungsprodukte & Biochemikalien



Zellkultur & Verbrauchsmaterial



Diagnostik & molekulare Diagnostik



Laborgeräte & Service

Weitere Information auf den folgenden Seiten!
See the following pages for more information!



Lieferung & Zahlungsart

siehe unsere [Liefer- und Versandbedingungen](#)

Zuschläge

- Mindermengenzuschlag
- Trockeneiszuschlag
- Gefahrgutzuschlag
- Expressversand

SZABO-SCANDIC HandelsgmbH

Quellenstraße 110, A-1100 Wien

T. +43(0)1 489 3961-0

F. +43(0)1 489 3961-7

mail@szabo-scandic.com

www.szabo-scandic.com

[linkedin.com/company/szaboscandic](https://www.linkedin.com/company/szaboscandic) 

GTX300114

Internal Controls Antibody Panel- monoclonal

Product Content

Cat No	Product Name	Reactivity	Application	Package
GTX627408	GAPDH antibody [GT239]	Human, Mouse, Rat, Zebrafish, Yeast, Drosophila, Dog, Pig, Monkey, Candida albicans, E. coli	WB, ICC/IF, IHC-P, EMSA	10 µl
GTX628802	alpha Tubulin antibody [GT114]	Human, Mouse, Rat, Zebrafish, Goat, Drosophila, Crucian carp	WB, ICC/IF, IHC-P, IHC-Fr, FACS	10 µl
GTX629630	beta Actin antibody [GT5512]	Human, Mouse, Rat, Zebrafish, Yeast, Rabbit, Goat, Drosophila, Cat, Dog, Monkey, Xenopus	WB, ICC/IF, IHC-P, IP	10 µl

Note

For In vitro laboratory use only. Not for any clinical, therapeutic, or diagnostic use in humans or animals. Not for animal or human consumption.



For full product information, images and publications, please visit our [website](#).

GAPDH antibody [GT239]

Cat. No. GTX627408

Host	Mouse
Clonality	Monoclonal
Isotype	IgG2b
Application	WB, ICC/IF, IHC-P, EMSA
Reactivity	Human, Mouse, Rat, Zebrafish, Yeast, Drosophila, Dog, Pig, Monkey, Candida albicans, E. coli

Reference (423)

★★★★★ Review (155)

Package

100 µl, 25 µl

APPLICATION

Application Note

*Optimal dilutions/concentrations should be determined by the researcher.

Suggested dilution	Recommended dilution
WB	1:500-1:20000
ICC/IF	1:100-1:1000
IHC-P	1:100-1:1000
EMSA	Assay dependent

Not tested in other applications.

Calculated MW 36 kDa. ([Note](#))

PROPERTIES

Form	Liquid
Buffer	PBS
Preservative	No Preservative
Storage	Store as concentrated solution. Centrifuge briefly prior to opening vial. For short-term storage (1-2 weeks), store at 4°C. For long-term storage, aliquot and store at -20°C or below. Avoid multiple freeze-thaw cycles.
Concentration	1 mg/ml (Please refer to the vial label for the specific concentration.)
Immunogen	Recombinant protein encompassing a sequence within the center region of human GAPDH. The exact sequence is proprietary.
Purification	Affinity purified by Protein G.
Conjugation	Unconjugated



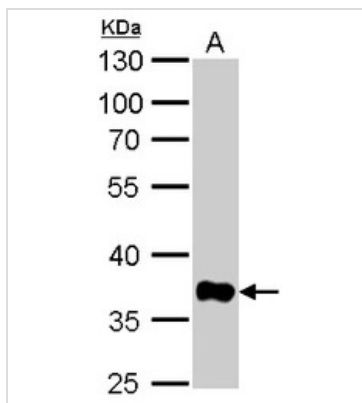
For full product information, images and publications, please visit our [website](#).

For laboratory research use only. Not for any clinical, therapeutic, or diagnostic use in humans or animals. Not for animal or human consumption.

Note

Purchasers shall not, and agree not to enable third parties to, analyze, copy, reverse engineer or otherwise attempt to determine the structure or sequence of the product.

DATA IMAGES



GTX627408 WB Image

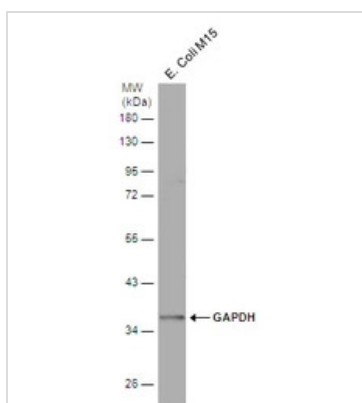
GAPDH antibody [GT239] detects GAPDH protein by western blot analysis.

A. 30 μ g yeast whole cell lysate/extract

10% SDS-PAGE

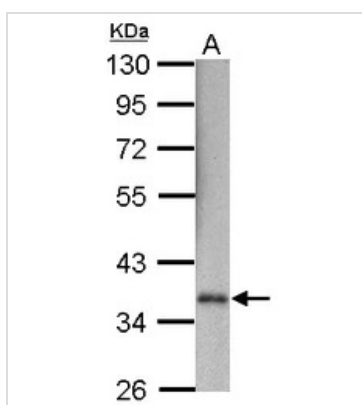
GAPDH antibody [GT239] (GTX627408) dilution: 1:10000

The HRP-conjugated anti-mouse IgG antibody (GTX213111-01) was used to detect the primary antibody.



GTX627408 WB Image

Whole cell extract (30 μ g) was separated by 10% SDS-PAGE, and the membrane was blotted with GAPDH antibody [GT239] (GTX627408) diluted at 1:1000. The HRP-conjugated anti-mouse IgG antibody (GTX213111-01) was used to detect the primary antibody.



GTX627408 WB Image

Sample (30 μ g of whole cell lysate)

A: Drosophila

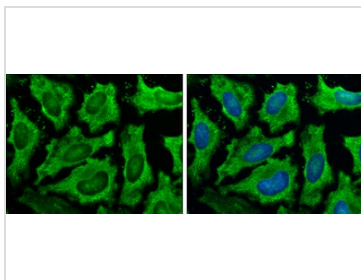
10% SDS PAGE

GTX627408 diluted at 1:5000

The HRP-conjugated anti-mouse IgG antibody (GTX213111-01) was used to detect the primary antibody.

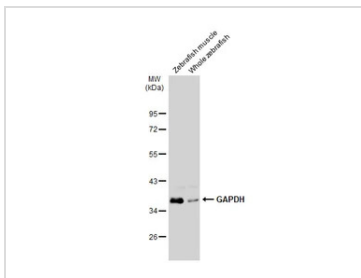


For full product information, images and publications, please visit our [website](#).



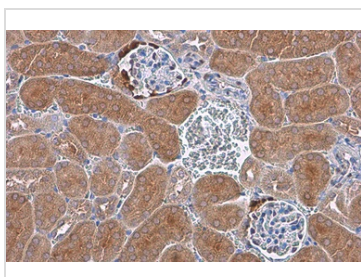
GTX627408 ICC/IF Image

GAPDH antibody [GT239] detects GAPDH protein at cytoplasm by immunofluorescent analysis.
 Sample: HeLa cells were fixed in ice-cold MeOH for 5 min.
 Green: GAPDH stained by GAPDH antibody [GT239] (GTX627408) diluted at 1:500.
 Blue: Hoechst 33342 staining.



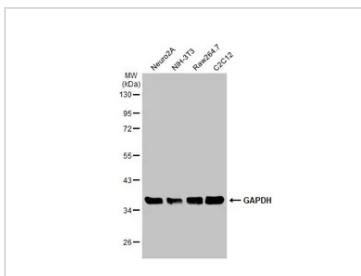
GTX627408 WB Image

Various tissue extracts (30 µg) were separated by 10% SDS-PAGE, and the membrane was blotted with GAPDH antibody [GT239] (GTX627408) diluted at 1:1000. The HRP-conjugated anti-mouse IgG antibody (GTX213111-01) was used to detect the primary antibody.



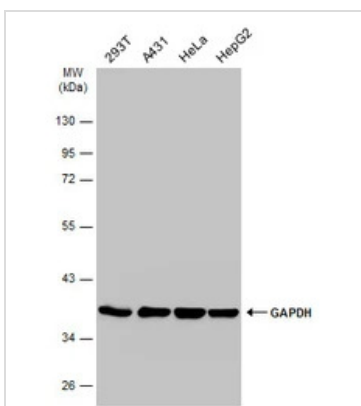
GTX627408 IHC-P Image

GAPDH antibody [GT239] detects GAPDH protein at cytoplasm by immunohistochemical analysis.
 Sample: Paraffin-embedded mouse kidney.
 GAPDH stained by GAPDH antibody [GT239] (GTX627408) diluted at 1:200.
 Antigen Retrieval: Citrate buffer, pH 6.0, 15 min



GTX627408 WB Image

Various whole cell extracts (30 µg) were separated by 10% SDS-PAGE, and the membrane was blotted with GAPDH antibody [GT239] (GTX627408) diluted at 1:10000. The HRP-conjugated anti-mouse IgG antibody (GTX213111-01) was used to detect the primary antibody.

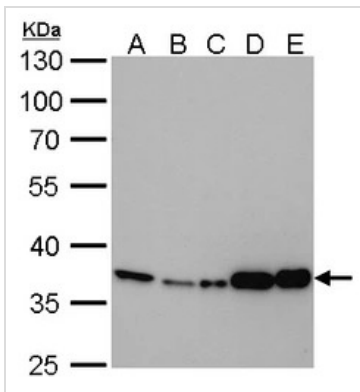


GTX627408 WB Image

Various whole cell extracts (30 µg) were separated by 10% SDS-PAGE, and the membrane was blotted with GAPDH antibody [GT239] (GTX627408) diluted at 1:10000. The HRP-conjugated anti-mouse IgG antibody (GTX213111-01) was used to detect the primary antibody.



For full product information, images and publications, please visit our [website](#).


GTX627408 WB Image

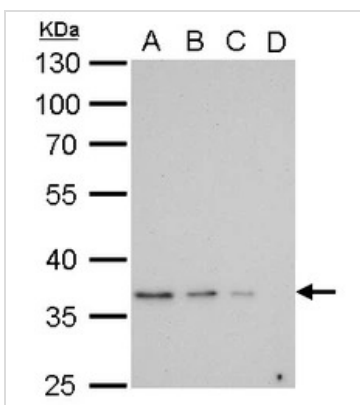
GAPDH antibody [GT239] detects GAPDH protein by western blot analysis.

- A. 30 µg 293T whole cell lysate/extract
- B. 30 µg NIH-3T3 whole cell lysate/extract
- C. 30 µg mouse brain lysate/extract
- D. 30 µg PC-12 whole cell lysate/extract
- E. 30 µg rat brain lysate/extract

10% SDS-PAGE

GAPDH antibody [GT239] (GTX627408) dilution: 1:10000

The HRP-conjugated anti-mouse IgG antibody (GTX213111-01) was used to detect the primary antibody.


GTX627408 WB Image

GAPDH antibody [GT239] detects GAPDH protein by western blot analysis.

- A. 20 µg 293T whole cell lysate/extract
- B. 10 µg 293T whole cell lysate/extract
- C. 5 µg 293T whole cell lysate/extract
- D. 1 µg 293T whole cell lysate/extract

10% SDS-PAGE

GAPDH antibody [GT239] (GTX627408) dilution: 1:10000

The HRP-conjugated anti-mouse IgG antibody (GTX213111-01) was used to detect the primary antibody.



For full product information, images and publications, please visit our [website](#).

alpha Tubulin antibody [GT114]

Cat. No. GTX628802

Host	Mouse
Clonality	Monoclonal
Isotype	IgG2a
Application	WB, ICC/IF, IHC-P, IHC-Fr, FACS
Reactivity	Human, Mouse, Rat, Zebrafish, Goat, Drosophila, Crucian carp

Reference (129)

★★★★☆ Review (25)

Package

100 µl, 25 µl

PRODUCT

Summary

alpha Tubulin antibody [GT114] detects alpha Tubulin, a cytoskeletal protein widely expressed in cells that is commonly used as a loading control for western blots. The predicted molecular weight of alpha Tubulin protein is 50 kDa. This is a well-cited mouse monoclonal antibody validated for multiple applications including western blot, immunohistochemistry, and immunocytochemistry.

APPLICATION

Application Note

*Optimal dilutions/concentrations should be determined by the researcher.

Suggested dilution	Recommended dilution
WB	1:500-1:20000
ICC/IF	1:100-1:1000
IHC-P	1:100-1:1000
IHC-Fr	1:100-1:1000
FACS	Assay dependent

Not tested in other applications.

Calculated MW 50 kDa. ([Note](#))

PROPERTIES

Form	Liquid
Buffer	1XPBS (pH7), 20% Glycerol
Preservative	No Preservative
Storage	Store as concentrated solution. Centrifuge briefly prior to opening vial. For short-term storage (1-2 weeks), store at 4°C. For long-term storage, aliquot and store at -20°C or below. Avoid multiple freeze-thaw cycles.
Concentration	1 mg/ml (Please refer to the vial label for the specific concentration.)
Immunogen	Recombinant protein encompassing a sequence within the center region of human alpha Tubulin. The exact sequence is proprietary.



For full product information, images and publications, please visit our [website](#).

Date 2023 / 07 / 27 Page 6 of 16

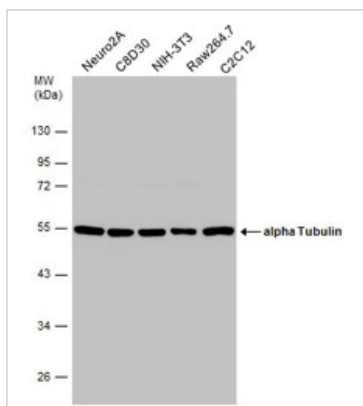
Purification Affinity purified by Protein A.
From tissue culture supernatant

Conjugation Unconjugated

Note For laboratory research use only. Not for any clinical, therapeutic, or diagnostic use in humans or animals. Not for animal or human consumption.

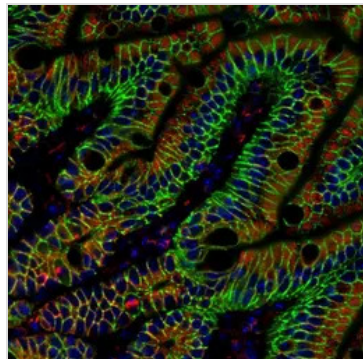
Purchasers shall not, and agree not to enable third parties to, analyze, copy, reverse engineer or otherwise attempt to determine the structure or sequence of the product.

DATA IMAGES



GTX628802 WB Image

Various whole cell extracts (30 µg) were separated by 10% SDS-PAGE, and the membrane was blotted with alpha Tubulin antibody [GT114] (GTX628802) diluted at 1:10000. The HRP-conjugated anti-mouse IgG antibody (GTX213111-01) was used to detect the primary antibody.



GTX628802 IHC-P Image

alpha Tubulin antibody [GT114] detects alpha Tubulin protein at cytoplasm in mouse colon by immunohistochemical analysis.

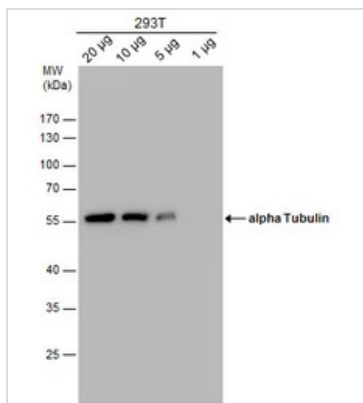
Sample: Paraffin-embedded mouse colon.

Red: alpha Tubulin antibody [GT114] (GTX628802) diluted at 1:500.

Green: beta Catenin antibody [N1N2-2] (GTX101435) diluted at 1:500.

Blue: Hoechst 33342 staining.

Antigen Retrieval: Trilogy™ (EDTA based, pH 8.0) buffer, 15min

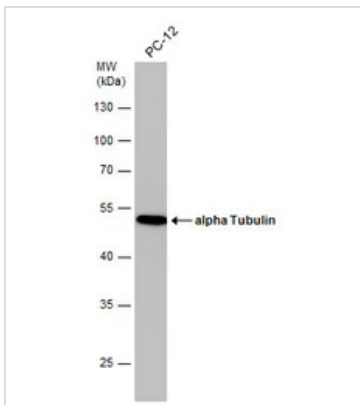


GTX628802 WB Image

alpha Tubulin antibody detects alpha Tubulin protein by western blot analysis. Varied amount of 293T Whole cell extracts was separated by 10% SDS-PAGE, and the membrane was blotted with alpha Tubulin antibody (GTX628802) at a dilution of 1:10000. The HRP-conjugated anti-mouse IgG antibody (GTX213111-01) was used to detect the primary antibody.

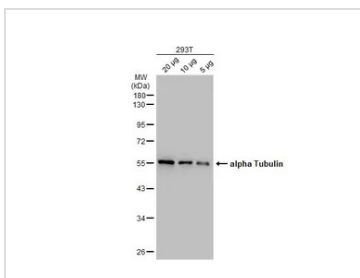


For full product information, images and publications, please visit our [website](#).



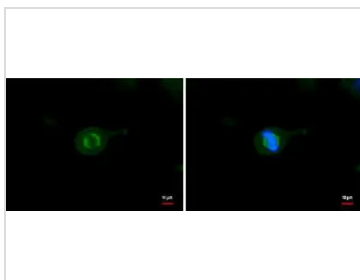
GTX628802 WB Image

Whole cell extract (30 µg) was separated by 10% SDS-PAGE, and the membrane was blotted with alpha Tubulin antibody [GT114] (GTX628802) diluted at 1:10000. The HRP-conjugated anti-mouse IgG antibody (GTX213111-01) was used to detect the primary antibody.



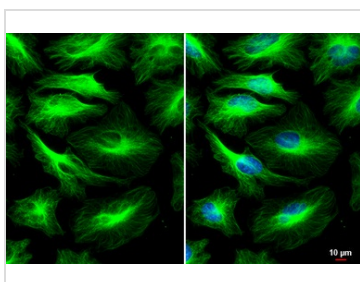
GTX628802 WB Image

Various whole cell extracts were separated by 10% SDS-PAGE, and the membrane was blotted with alpha Tubulin antibody [GT114] (GTX628802) diluted at 1:10000. The HRP-conjugated anti-mouse IgG antibody (GTX213111-01) was used to detect the primary antibody.



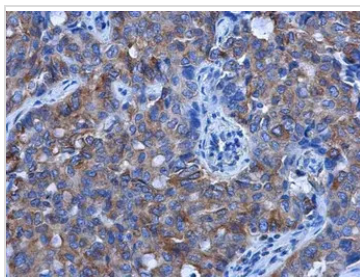
GTX628802 ICC/IF Image

TUBA1B antibody detects TUBA1B protein at Cytoskeleton by immunofluorescent analysis.
 Sample: HeLa cells were fixed in -20°C 100% methanol for 5 min.
 Green: TUBA1B protein stained by TUBA1B antibody (GTX628802) diluted at 1:500.
 Blue: Hoechst 33342 staining.



GTX628802 ICC/IF Image

alpha Tubulin antibody [GT114] detects alpha Tubulin protein at cytoskeleton by immunofluorescent analysis.
 Sample: HeLa cells were fixed in 4% paraformaldehyde at RT for 15 min.
 Green: alpha Tubulin stained by alpha Tubulin antibody [GT114] (GTX628802) diluted at 1:500.
 Blue: Hoechst 33342 staining.
 Scale bar= 10 µm.



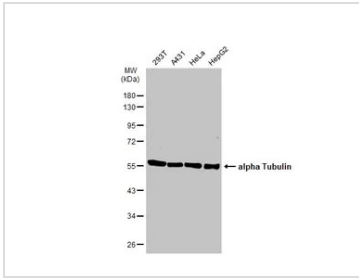
GTX628802 IHC-P Image

alpha Tubulin antibody [GT114] detects alpha Tubulin protein at cytoplasm in human lung cancer by immunohistochemical analysis.
 Sample: Paraffin-embedded human lung cancer.
 alpha Tubulin antibody [GT114] (GTX628802) diluted at 1:500.

Antigen Retrieval: Citrate buffer, pH 6.0, 15 min

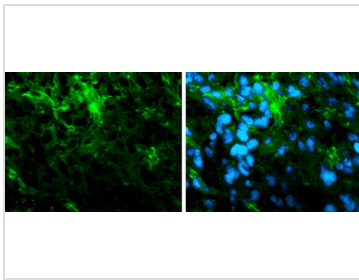


For full product information, images and publications, please visit our [website](#).



GTX628802 WB Image

Various whole cell extracts (30 µg) were separated by 10% SDS-PAGE, and the membrane was blotted with alpha Tubulin antibody [GT114] (GTX628802) diluted at 1:10000. The HRP-conjugated anti-mouse IgG antibody (GTX213111-01) was used to detect the primary antibody.

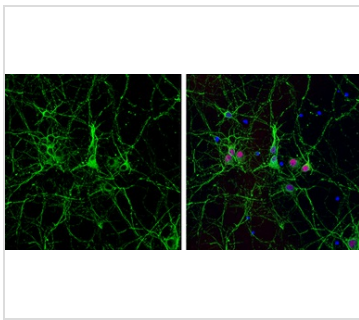


GTX628802 IHC-Fr Image

Immunofluorescence photomicrographs of frozen sections of mouse brain.

Green: alpha Tubulin antibody [GT114] (GTX628802) diluted at 1:200. The signal was developed using goat anti-mouse IgG antibody (Dylight488) (GTX213111-04).

Blue: Nuclear staining with Hoechst 33342.



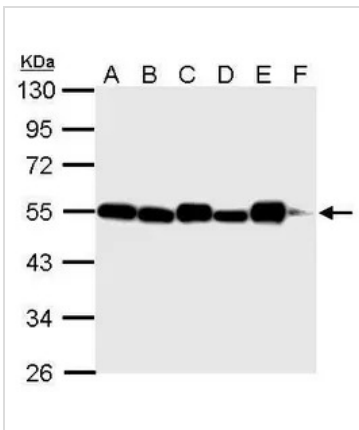
GTX628802 ICC/IF Image

alpha Tubulin antibody [GT114] detects alpha Tubulin protein expression by immunofluorescent analysis. Sample: Cultured rat E18 primary cortical neuron, DIV 8. Cells were fixed in 4% paraformaldehyde at RT for 15 min.

Green: alpha Tubulin protein stained by alpha Tubulin antibody [GT114] (GTX628802) diluted at 1:250.

Red: NeuN, stained by NeuN antibody (GTX132974) diluted at 1:250.

Blue: Fluoroshield with DAPI (GTX30920).



GTX628802 WB Image

alpha Tubulin antibody [GT114] detects TUBA1B protein by western blot analysis.

A. 30 µg 293T whole cell lysate/extract

B. 30 µg NIH-3T3 whole cell lysate/extract

C. 30 µg mouse brain lysate/extract

D. 30 µg PC-12 whole cell lysate/extract

E. 30 µg rat brain lysate/extract

F. 30 µg drosophila lysae/extract

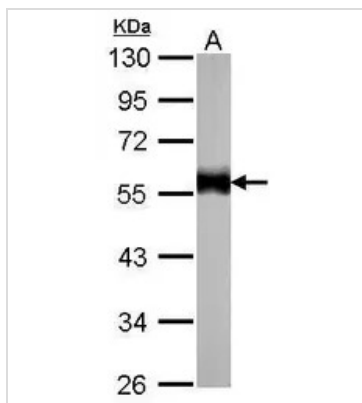
10% SDS-PAGE

alpha Tubulin antibody [GT114] (GTX628802) dilution: 1:5000

The HRP-conjugated anti-mouse IgG antibody (GTX213111-01) was used to detect the primary antibody.



For full product information, images and publications, please visit our [website](#).

**GTX628802 WB Image**

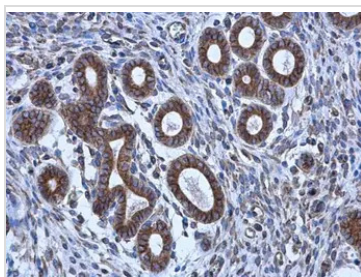
alpha Tubulin antibody [GT114] detects TUBA1B protein by western blot analysis.

A. 30 µg zebrafish eye lysate/extract

10% SDS-PAGE

alpha Tubulin antibody [GT114] (GTX628802) dilution: 1:1000

The HRP-conjugated anti-mouse IgG antibody (GTX213111-01) was used to detect the primary antibody.

**GTX628802 IHC-P Image**

alpha Tubulin antibody [GT114] detects alpha Tubulin protein at cytoplasm in human cervix by immunohistochemical analysis.

Sample: Paraffin-embedded human cervix.

alpha Tubulin antibody [GT114] (GTX628802) diluted at 1:500.

Antigen Retrieval: Citrate buffer, pH 6.0, 15 min



For full product information, images and publications, please visit our [website](#).

beta Actin antibody [GT5512]

Cat. No. GTX629630

Host	Mouse
Clonality	Monoclonal
Isotype	IgG1
Application	WB, ICC/IF, IHC-P, IP
Reactivity	Human, Mouse, Rat, Zebrafish, Yeast, Rabbit, Goat, Drosophila, Cat, Dog, Monkey, Xenopus

Reference (133)

★★★★☆ Review (26)

Package

100 µl, 25 µl

APPLICATION

Application Note

*Optimal dilutions/concentrations should be determined by the researcher.

Suggested dilution	Recommended dilution
WB	1:500-1:20000
ICC/IF	1:100-1:1000
IHC-P	1:100-1:1000
IP	Assay dependent

Not tested in other applications.

Calculated MW 42 kDa. ([Note](#))**Product Note** IP/MS validation was supported by references (PMID:30377426)

PROPERTIES

Form	Liquid
Buffer	PBS
Preservative	No Preservative
Storage	Store as concentrated solution. Centrifuge briefly prior to opening vial. For short-term storage (1-2 weeks), store at 4°C. For long-term storage, aliquot and store at -20°C or below. Avoid multiple freeze-thaw cycles.
Concentration	1 mg/ml (Please refer to the vial label for the specific concentration.)
Immunogen	Carrier-protein conjugated synthetic peptide encompassing a sequence within the C-terminus region of human beta Actin. The exact sequence is proprietary.
Purification	Affinity purified by Protein G.
Conjugation	Unconjugated

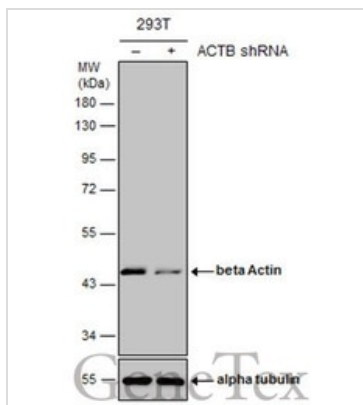
For full product information, images and publications, please visit our [website](#).

For laboratory research use only. Not for any clinical, therapeutic, or diagnostic use in humans or animals. Not for animal or human consumption.

Note

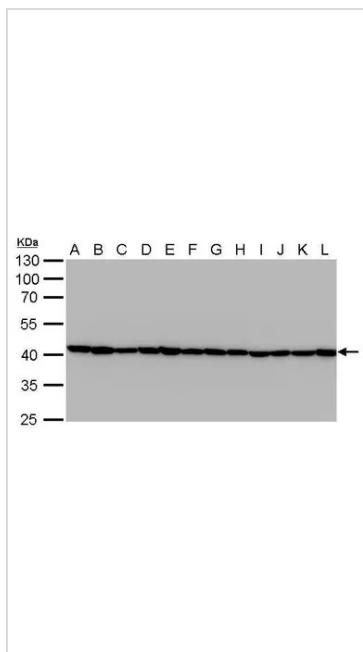
Purchasers shall not, and agree not to enable third parties to, analyze, copy, reverse engineer or otherwise attempt to determine the structure or sequence of the product.

DATA IMAGES



GTX629630 WB Image

Non-transfected (-) and transfected (+) 293T whole cell extracts (10 µg) were separated by 10% SDS-PAGE, and the membrane was blotted with beta Actin antibody [GT5512] (GTX629630) diluted at 1:20000. The HRP-conjugated anti-mouse IgG antibody (GTX213111-01) was used to detect the primary antibody.



GTX629630 WB Image

Beta Actin antibody [GT5512] detects beta Actin protein by western blot analysis.

- A. 30 µg Jurkat whole cell lysate/extract
- B. 30 µg Raji whole cell lysate/extract
- C. 30 µg 293T whole cell lysate/extract
- D. 30 µg A431 whole cell lysate/extract
- E. 30 µg HeLa whole cell lysate/extract
- F. 30 µg HepG2 whole cell lysate/extract
- G. 30 µg H1299 whole cell lysate/extract
- H. 30 µg HCT116 whole cell lysate/extract
- I. 30 µg MCF-7 whole cell lysate/extract
- J. 30 µg NT2D1 whole cell lysate/extract
- K. 30 µg PC-3 whole cell lysate/extract
- L. 30 µg U87-MG whole cell lysate/extract

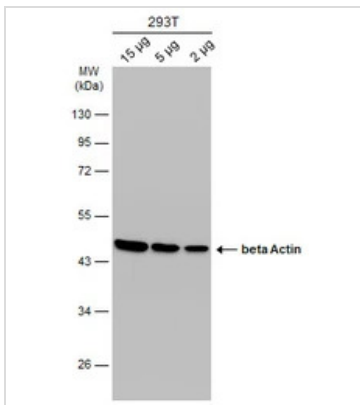
10% SDS-PAGE

Beta Actin antibody [GT5512] (GTX629630) dilution: 1:20000

The HRP-conjugated anti-mouse IgG antibody (GTX213111-01) was used to detect the primary antibody.

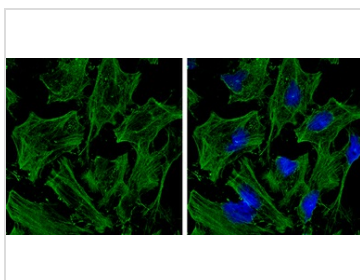


For full product information, images and publications, please visit our [website](#).



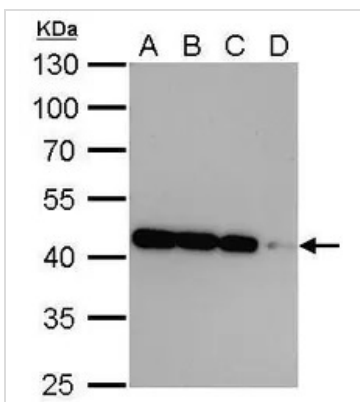
GTX629630 WB Image

Various whole cell extracts (15 | 5 | 2 µg) were separated by 10% SDS-PAGE, and the membrane was blotted with beta Actin antibody [GT5512] (GTX629630) diluted at 1:2000. The HRP-conjugated anti-mouse IgG antibody (GTX213111-01) was used to detect the primary antibody.



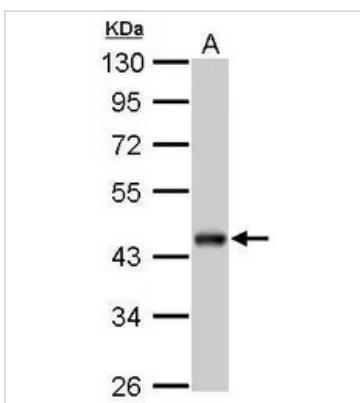
GTX629630 ICC/IF Image

beta Actin antibody [GT5512] detects beta Actin protein at cytoskeleton by immunofluorescent analysis. Sample: HeLa cells were fixed in 0.5% Triton X-100 for 1 min, then ice-cold methanol for 5 min. Green: beta Actin protein stained by beta Actin antibody [GT5512] (GTX629630) diluted at 1:500. Blue: Hoechst 33342 staining.



GTX629630 WB Image

Beta Actin antibody [GT5512] detects beta Actin protein by western blot analysis.
 A. 20 µg 293T whole cell lysate/extract
 B. 10 µg 293T whole cell lysate/extract
 C. 5 µg 293T whole cell lysate/extract
 D. 1 µg 293T whole cell lysate/extract
 10% SDS-PAGE
 Beta Actin antibody [GT5512] (GTX629630) dilution: 1:10000
 The HRP-conjugated anti-mouse IgG antibody (GTX213111-01) was used to detect the primary antibody.

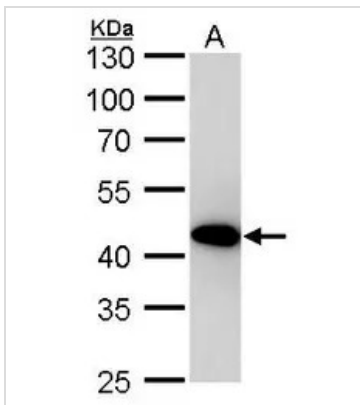


GTX629630 WB Image

Beta Actin antibody [GT5512] detects beta Actin protein by western blot analysis.
 A. 30 µg drosophila lysate/extract
 10% SDS-PAGE
 Beta Actin antibody [GT5512] (GTX629630) dilution: 1:1000
 The HRP-conjugated anti-mouse IgG antibody (GTX213111-01) was used to detect the primary antibody.



For full product information, images and publications, please visit our [website](#).



GTX629630 WB Image

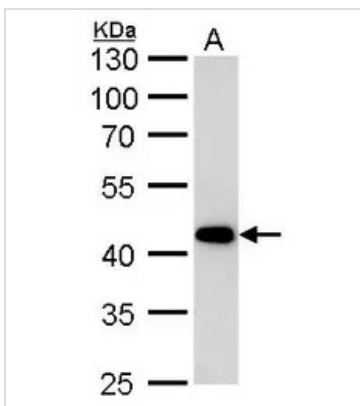
beta Actin antibody [GT5512] detects beta Actin protein by western blot analysis.

A. 30 µg goat blood lysate/extract

10% SDS-PAGE

beta Actin antibody [GT5512] (GTX629630) dilution: 1:10000

The HRP-conjugated anti-mouse IgG antibody (GTX213111-01) was used to detect the primary antibody.



GTX629630 WB Image

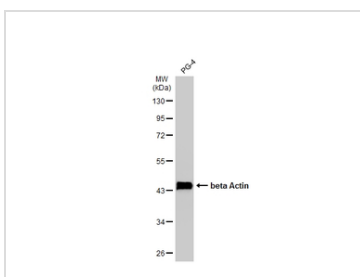
beta Actin antibody [GT5512] detects beta Actin protein by western blot analysis.

A. 30 µg rabbit blood lysate/extract

10% SDS-PAGE

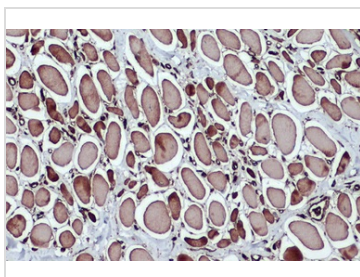
beta Actin antibody [GT5512] (GTX629630) dilution: 1:10000

The HRP-conjugated anti-mouse IgG antibody (GTX213111-01) was used to detect the primary antibody.



GTX629630 WB Image

Whole cell extract (30 µg) was separated by 10% SDS-PAGE, and the membrane was blotted with beta Actin antibody (GTX629630) diluted at 1:20000. The HRP-conjugated anti-mouse IgG antibody (GTX213111-01) was used to detect the primary antibody.



GTX629630 IHC-P Image

beta Actin antibody [GT5512] detects beta Actin protein at cytoplasm by immunohistochemical analysis.

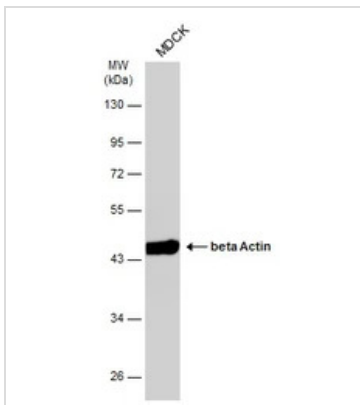
Sample: Paraffin-embedded dog muscle.

beta Actin stained by beta Actin antibody [GT5512] (GTX629630) diluted at 1:200.

Antigen Retrieval: Citrate buffer, pH 6.0, 15 min

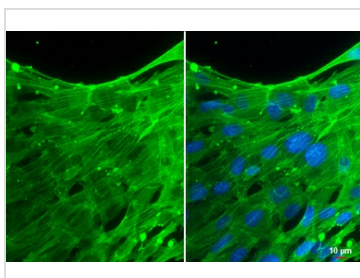


For full product information, images and publications, please visit our [website](#).



GTX629630 WB Image

Whole cell extract (30 µg) was separated by 10% SDS-PAGE, and the membrane was blotted with beta Actin antibody (GTX629630) diluted at 1:20000. The HRP-conjugated anti-mouse IgG antibody (GTX213111-01) was used to detect the primary antibody.



GTX629630 ICC/IF Image

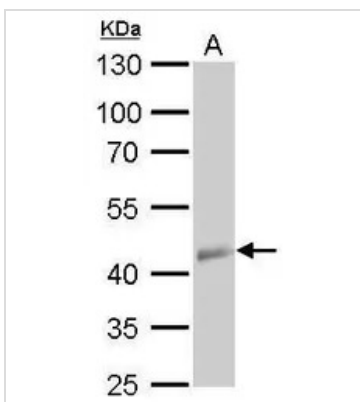
beta Actin antibody detects beta Actin protein at cytoskeleton by immunofluorescent analysis.

Sample: PG-4 cells were fixed in ice-cold MeOH for 5 min.

Green: beta Actin stained by beta Actin antibody? (GTX629630) diluted at 1:500.

Blue: Hoechst 33342 staining.

Scale bar= 10 µm.



GTX629630 WB Image

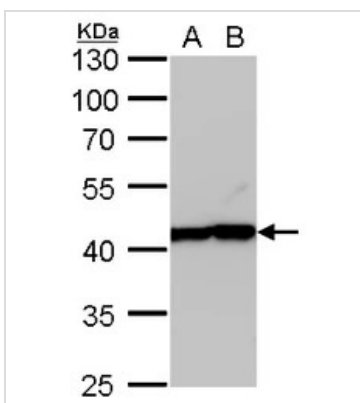
beta Actin antibody [GT5512] detects beta Actin protein by western blot analysis.

A. 30 µg 30 hpf zebrafish lysate/extract

10% SDS-PAGE

beta Actin antibody [GT5512] (GTX629630) dilution: 1:1000

The HRP-conjugated anti-mouse IgG antibody (GTX213111-01) was used to detect the primary antibody.



GTX629630 WB Image

beta Actin antibody[GT5512] detects beta Actin protein by western blot analysis.

A. 30 µg MCF-7 whole cell lysate/extract

B. 30 µg MDA-MB-231 whole cell lysate/extract

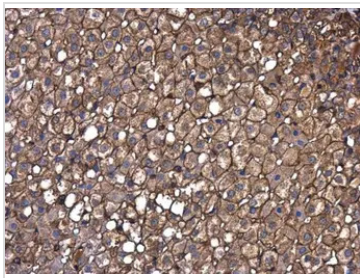
10% SDS-PAGE

beta Actin antibody[GT5512] (GTX629630) dilution: 1:20000

The HRP-conjugated anti-mouse IgG antibody (GTX213111-01) was used to detect the primary antibody.



For full product information, images and publications, please visit our [website](#).



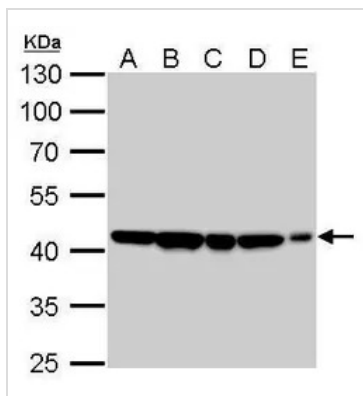
GTX629630 IHC-P Image

beta Actin antibody [GT5512] detects beta Actin protein at cell membrane and cytoplasm in rat adrenal gland by immunohistochemical analysis.

Sample: Paraffin-embedded rat adrenal gland.

beta Actin antibody [GT5512] (GTX629630) diluted at 1:250.

Antigen Retrieval: Citrate buffer, pH 6.0, 15 min



GTX629630 WB Image

Beta Actin antibody [GT5512] detects beta Actin protein by western blot analysis.

A. 30 µg 293T whole cell lysate/extract

B. 30 µg NIH-3T3 whole cell lysate/extract

C. 30 µg mouse brain lysate/extract

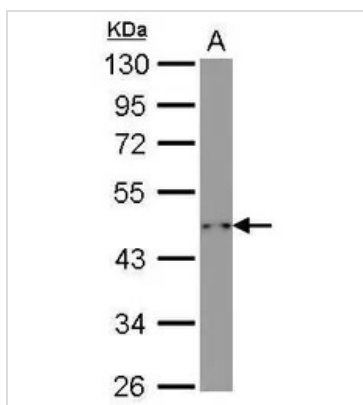
D. 30 µg PC-12 whole cell lysate/extract

E. 30 µg rat brain lysate/extract

10% SDS-PAGE

Beta Actin antibody [GT5512] (GTX629630) dilution: 1:10000

The HRP-conjugated anti-mouse IgG antibody (GTX213111-01) was used to detect the primary antibody.



GTX629630 WB Image

beta Actin antibody [GT5512] detects beta Actin protein by western blot analysis.

A. 10 µg yeast lysate/extract

10% SDS-PAGE

beta Actin antibody [GT5512] (GTX629630) dilution: 1:1000

The HRP-conjugated anti-mouse IgG antibody (GTX213111-01) was used to detect the primary antibody.



For full product information, images and publications, please visit our [website](#).