



SZABO SCANDIC

Part of Europa Biosite

Produktinformation



Forschungsprodukte & Biochemikalien



Zellkultur & Verbrauchsmaterial



Diagnostik & molekulare Diagnostik



Laborgeräte & Service

Weitere Information auf den folgenden Seiten!
See the following pages for more information!



Lieferung & Zahlungsart

siehe unsere [Liefer- und Versandbedingungen](#)

Zuschläge

- Mindermengenzuschlag
- Trockeneiszuschlag
- Gefahrgutzuschlag
- Expressversand

SZABO-SCANDIC HandelsgmbH

Quellenstraße 110, A-1100 Wien

T. +43(0)1 489 3961-0

F. +43(0)1 489 3961-7

mail@szabo-scandic.com

www.szabo-scandic.com

[linkedin.com/company/szaboscandic](https://www.linkedin.com/company/szaboscandic) 

GTX300119

Anti-Rabbit IgG secondary antibody panel

Reference (3)

Product Content

Cat No	Product Name	Reactivity	Application	Package
GTX213110-01	Goat Anti-Rabbit IgG antibody (HRP)	Rabbit	WB, ICC/IF, IHC-P, IHC-Fr, Dot, ELISA	30 µl
GTX213110-04	Goat Anti-Rabbit IgG antibody (DyLight488)	Rabbit	WB, ICC/IF, IHC-P, IHC-Fr, IHC-Wm, FACS	30 µl
GTX213110-05	Goat Anti-Rabbit IgG antibody (DyLight594)	Rabbit	WB, ICC/IF, IHC-P, IHC-Fr, FACS	30 µl

Note

For In vitro laboratory use only. Not for any clinical, therapeutic, or diagnostic use in humans or animals. Not for animal or human consumption.



For full product information, images and publications, please visit our [website](#).

Goat Anti-Rabbit IgG antibody (HRP)

Cat. No. GTX213110-01

Host	Goat
Clonality	Polyclonal
Isotype	IgG
Application	WB, ICC/IF, IHC-P, IHC-Fr, Dot, ELISA
Reactivity	Rabbit

Reference (458)

★★★★★ Review (14)

Package

1 ml

APPLICATION

Application Note

*Optimal dilutions/concentrations should be determined by the researcher.

Suggested dilution	Recommended dilution
WB	Assay dependent
ICC/IF	Assay dependent
IHC-P	1:100-1:1000
IHC-Fr	Assay dependent
Dot	Assay dependent
ELISA	Assay dependent

Not tested in other applications.

PROPERTIES

Form	Liquid
Buffer	0.05M Tris, 0.15M NaCl (pH7.4), 1%BSA
Preservative	0.025% ProClin 300
Storage	Store as concentrated solution. Centrifuge briefly prior to opening vial. For short-term storage (1-2 weeks), store at 4°C. For long-term storage, aliquot and store at -20°C or below. Avoid multiple freeze-thaw cycles.
Concentration	0.5 mg/ml (Please refer to the vial label for the specific concentration.)
Immunogen	Highly purified whole rabbit IgG
Purification	Purified by antigen-affinity chromatography.
Conjugation	Horseradish peroxidase(HRP)

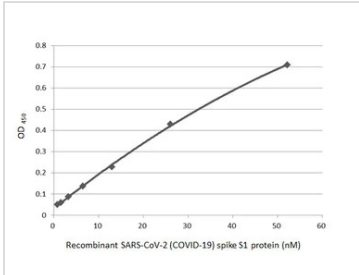


For full product information, images and publications, please visit our [website](#).

For laboratory research use only. Not for any clinical, therapeutic, or diagnostic use in humans or animals. Not for animal or human consumption.

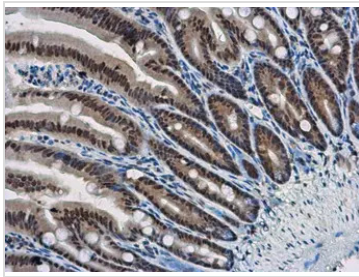
Note
Purchasers shall not, and agree not to enable third parties to, analyze, copy, reverse engineer or otherwise attempt to determine the structure or sequence of the product.

DATA IMAGES



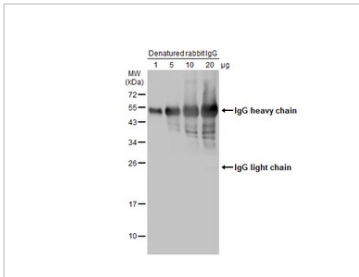
GTX213110-01 ELISA Image

Indirect ELISA analysis performed by coating plate with recombinant SARS-CoV-2 (COVID-19) Spike S1 protein, His tag (active) (GTX135817-pro) (52.15-0.81 nM). Coated protein was probed with SARS-CoV-2 (COVID-19) Spike S1 antibody [HL134] (GTX635671) (1 µg/mL). Goat anti-rabbit IgG antibody (HRP) (GTX213110-01) (1:10000) was used to detect bound primary antibody.



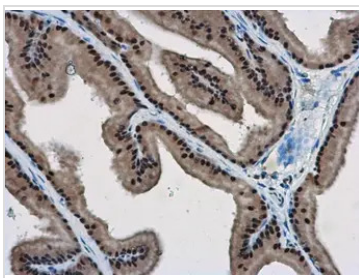
GTX213110-01 IHC-P Image

WBP11 antibody detects WBP11 protein at nucleus in mouse intestine by immunohistochemical analysis. Sample: Paraffin-embedded mouse intestine. WBP11 antibody (GTX118654) diluted at 1:500. The signal was developed by Rabbit IgG antibody (HRP) (GTX213110-01) Antigen Retrieval: Citrate buffer, pH 6.0, 15 min



GTX213110-01 WB Image

Various amounts of denatured rabbit IgG protein were separated by 12% SDS-PAGE, and the membrane was blotted with HRP-conjugated anti-rabbit IgG antibody (GTX213110-01) diluted at 1:5000.

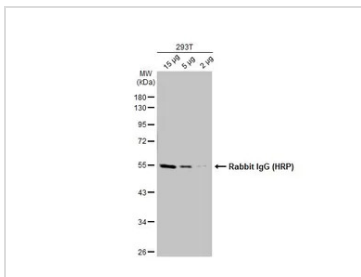


GTX213110-01 IHC-P Image

WBP11 antibody detects WBP11 protein at nucleus in rat prostate by immunohistochemical analysis. Sample: Paraffin-embedded rat prostate. WBP11 antibody (GTX118654) diluted at 1:500. The signal was developed by Rabbit IgG antibody (HRP) (GTX213110-01). Antigen Retrieval: Citrate buffer, pH 6.0, 15 min



For full product information, images and publications, please visit our [website](#).


GTX213110-01 WB Image

Various whole cell extracts were separated by 10% SDS-PAGE, and the membrane was blotted with Rabbit IgG antibody (HRP) (GTX213110-01) diluted at 1:10000.



For full product information, images and publications, please visit our [website](#).

Goat Anti-Rabbit IgG antibody (DyLight488)

Cat. No. GTX213110-04

Host	Goat
Clonality	Polyclonal
Isotype	IgG
Application	WB, ICC/IF, IHC-P, IHC-Fr, IHC-Wm, FACS
Reactivity	Rabbit

Reference (13)

Package

500 µl

APPLICATION

Application Note

*Optimal dilutions/concentrations should be determined by the researcher.

Suggested dilution	Recommended dilution
WB	Assay dependent
ICC/IF	1:100-1:2000
IHC-P	1:100-1:1000
IHC-Fr	1:100-1:1000
IHC-Wm	1:100-1:500
FACS	1:50-1:1000

Not tested in other applications.

PROPERTIES

Form	Liquid
Buffer	PBS
Preservative	No preservative
Storage	Store as concentrated solution. Centrifuge briefly prior to opening vial. For short-term storage (1-2 weeks), store at 4°C. For long-term storage, aliquot and store at -20°C or below. Avoid multiple freeze-thaw cycles. Protect from light.
Concentration	2 mg/ml (Please refer to the vial label for the specific concentration.)
Immunogen	Highly purified whole rabbit IgG
Purification	Purified by antigen-affinity chromatography.
Conjugation	DyLight488



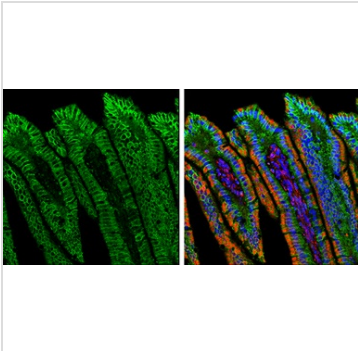
For full product information, images and publications, please visit our [website](#).

For laboratory research use only. Not for any clinical, therapeutic, or diagnostic use in humans or animals. Not for animal or human consumption.

Note

Purchasers shall not, and agree not to enable third parties to, analyze, copy, reverse engineer or otherwise attempt to determine the structure or sequence of the product.

DATA IMAGES



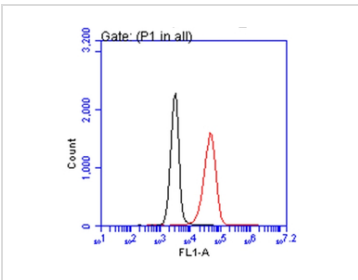
GTX213110-04 IHC-P Image

Double-labeled immunofluorescence photomicrographs of paraffin-embedded sections of mouse colon. Green: E-Cadherin antibody (GTX100443) diluted at 1:500. The signal was developed using goat anti-rabbit IgG antibody (Dylight488) (GTX213110-04).

Red: alpha Tubulin antibody [GT114] (GTX628802) diluted at 1:500. The signal was developed using goat anti-mouse IgG antibody (Dylight594) (GTX213111-05).

Blue: Fluoroshield with DAPI (GTX30920).

Antigen Retrieval: Citrate buffer, pH 6.0, 15 min



GTX213110-04 FACS Image

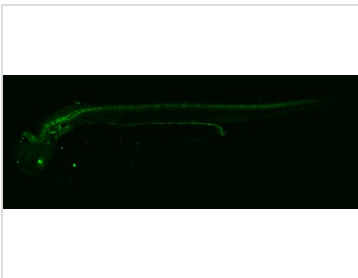
Glypican 1 antibody [N3C3] (GTX104557) detects Glypican 1 protein by flow cytometry analysis.

Sample: A431 cell.

Black: Unlabelled sample was used as a control.

Red: Glypican 1 antibody [N3C3] (GTX104557) dilution: 1:50.

Acquisition of 20,000 events were collected using the Rabbit IgG (DyLight488) (GTX113110-04) secondary antibody for FACS analysis.

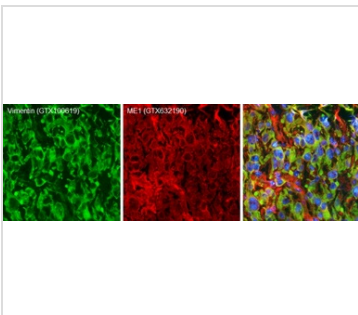


GTX213110-04 IHC-Wm Image

Whole mount immunohistochemical analysis of paraformaldehyde-fixed 2 day-post-fertilization zebrafish embryo using Pax2a antibody (GTX128127) detected by anti-rabbit IgG antibody (Dylight488) (GTX213110-04).

GTX128127 diluted at 1:100 and incubated overnight at 4°C.

GTX213110-04 diluted at 1:500 and incubated 3 hours at room temperature.



GTX213110-04 IHC-Fr Image

Double-labeled immunofluorescence photomicrographs of frozen sections of mouse brain.

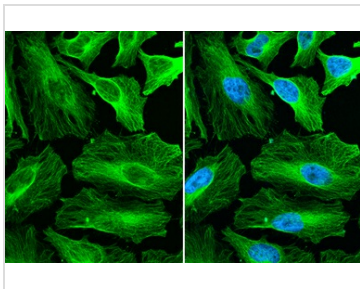
Green: Vimentin antibody (GTX100619) diluted at 1:200. The signal was developed using goat anti-rabbit IgG antibody (Dylight488) (GTX213110-04).

Red: ME1 antibody [GT15611] (GTX632190) diluted at 1:200. The signal was developed using goat anti-mouse IgG antibody (Dylight594) (GTX213111-05).

Blue: Nuclear staining with Hoechst 33342.



For full product information, images and publications, please visit our [website](#).

**GTX213110-04 ICC/IF Image**

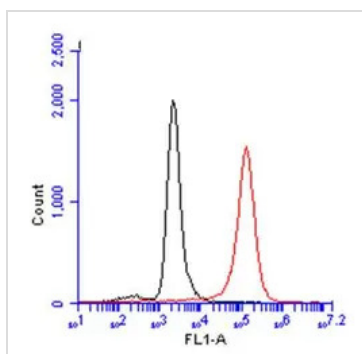
alpha Tubulin antibody detects alpha Tubulin protein at cytoskeleton by immunofluorescent analysis.

Sample: HeLa cells were fixed in 4% paraformaldehyde at RT for 15 min.

Green: alpha Tubulin stained by alpha Tubulin antibody (GTX112141) diluted at 1:500.

The signal was developed using Goat Anti-Rabbit IgG antibody (DyLight488) (GTX213110-04) diluted at 1:2000.

Blue: Fluoroshield with DAPI (GTX30920).

**GTX213110-04 FACS Image**

CD81 antibody (GTX101766) detects CD81 protein by flow cytometry analysis.

Sample: THP-1 cell.

Black: Unlabelled sample was used as a control.

Red: CD81 antibody (GTX101766) dilution: 1:50.

The Rabbit IgG antibody (DyLight488) (GTX213110-04) was used to detect the primary antibody.



For full product information, images and publications, please visit our [website](#).

Goat Anti-Rabbit IgG antibody (DyLight594)

Cat. No. GTX213110-05

Host	Goat
Clonality	Polyclonal
Isotype	IgG
Application	WB, ICC/IF, IHC-P, IHC-Fr, FACS
Reactivity	Rabbit

Reference (9)

Package

500 µl

APPLICATION

Application Note

*Optimal dilutions/concentrations should be determined by the researcher.

Suggested dilution	Recommended dilution
WB	Assay dependent
ICC/IF	1:100-1:2000
IHC-P	Assay dependent
IHC-Fr	1:100-1:1000
FACS	1:50-1:200

Not tested in other applications.

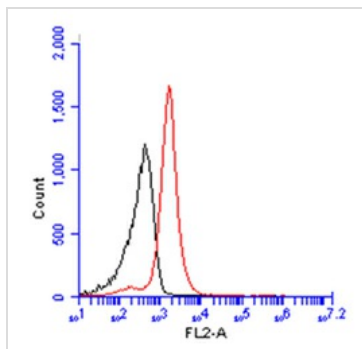
PROPERTIES

Form	Liquid
Buffer	PBS
Preservative	No Preservative
Storage	Store as concentrated solution. Centrifuge briefly prior to opening vial. For short-term storage (1-2 weeks), store at 4°C. For long-term storage, aliquot and store at -20°C or below. Avoid multiple freeze-thaw cycles. Protect from light.
Concentration	2 mg/ml (Please refer to the vial label for the specific concentration.)
Immunogen	Highly purified whole rabbit IgG
Purification	Purified by antigen-affinity chromatography.
Conjugation	DyLight594
Note	For laboratory research use only. Not for any clinical, therapeutic, or diagnostic use in humans or animals. Not for animal or human consumption. Purchasers shall not, and agree not to enable third parties to, analyze, copy, reverse engineer or otherwise attempt to determine the structure or sequence of the product.



For full product information, images and publications, please visit our [website](#).

DATA IMAGES

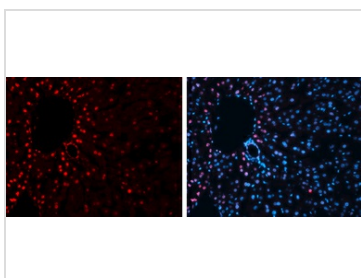
**GTX213110-05 FACS Image**

BrdU antibody (GTX128091) detects BrdU protein from HeLa treated with 10 μ M BrdU for 30 minutes and fixed in 4% paraformaldehyde at 4°C for 15 minutes by flow cytometry analysis.

Black: Unlabelled sample was used as a control.

Red: BrdU antibody (GTX128091) dilution: 1:50.

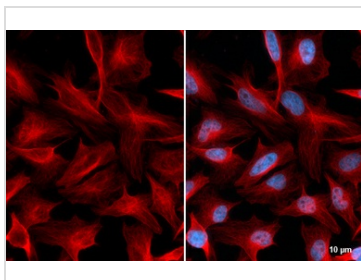
The Rabbit IgG antibody (DyLight594) (GTX213110-05) was used to detect the primary antibody.

**GTX213110-05 IHC-Fr Image**

Immunofluorescence photomicrographs of frozen sections of mouse liver.

Red: Histone H3K27me3 (trimethyl Lys27) antibody (GTX121184) diluted at 1:200. The signal was developed using goat anti-rabbit IgG antibody (Dylight594) (GTX213110-05).

Blue: Nuclear staining with Hoechst 33342.

**GTX213110-05 ICC/IF Image**

beta Tubulin antibody detects beta Tubulin protein at cytoskeleton by immunofluorescent analysis.

Sample: HeLa cells were fixed in 4% paraformaldehyde at RT for 15 min.

Red: alpha Tubulin stained by alpha Tubulin antibody (GTX101279) diluted at 1:100.

The signal was developed using Goat Anti-Rabbit IgG antibody (DyLight594) (GTX213110-05) diluted at 1:500.

Blue: Fluoroshield with DAPI (GTX30920).



For full product information, images and publications, please visit our [website](#).