



# SZABO SCANDIC

Part of Europa Biosite

## Produktinformation



Forschungsprodukte & Biochemikalien



Zellkultur & Verbrauchsmaterial



Diagnostik & molekulare Diagnostik



Laborgeräte & Service

Weitere Information auf den folgenden Seiten!  
See the following pages for more information!



### Lieferung & Zahlungsart

siehe unsere [Liefer- und Versandbedingungen](#)

### Zuschläge

- Mindermengenzuschlag
- Trockeneiszuschlag
- Gefahrgutzuschlag
- Expressversand

### SZABO-SCANDIC HandelsgmbH

Quellenstraße 110, A-1100 Wien

T. +43(0)1 489 3961-0

F. +43(0)1 489 3961-7

[mail@szabo-scandic.com](mailto:mail@szabo-scandic.com)

[www.szabo-scandic.com](http://www.szabo-scandic.com)

[linkedin.com/company/szaboscandic](https://www.linkedin.com/company/szaboscandic) 

GTX300120

## Anti-Mouse IgG secondary antibody panel

Reference ( 4 )

## Product Content

Cat No	Product Name	Reactivity	Application	Package
GTX213111-01	Goat Anti-Mouse IgG antibody (HRP)	Mouse	WB, ICC/IF, IHC-P, ELISA, IHC	30 µl
GTX213111-04	Goat Anti-Mouse IgG antibody (DyLight488)	Mouse	WB, ICC/IF, IHC-P, IHC-Fr, FACS	30 µl
GTX213111-05	Goat Anti-Mouse IgG antibody (DyLight594)	Mouse	WB, ICC/IF, IHC-P, IHC-Fr	30 µl

## Note

For In vitro laboratory use only. Not for any clinical, therapeutic, or diagnostic use in humans or animals. Not for animal or human consumption.



For full product information, images and publications, please visit our [website](#).

## Goat Anti-Mouse IgG antibody (HRP)

Cat. No. GTX213111-01

<b>Host</b>	Goat
<b>Clonality</b>	Polyclonal
<b>Isotype</b>	IgG
<b>Application</b>	WB, ICC/IF, IHC-P, ELISA, IHC
<b>Reactivity</b>	Mouse

Reference ( 329 )

★★★★★ Review ( 9 )

Package

1 ml

## APPLICATION

## Application Note

\*Optimal dilutions/concentrations should be determined by the researcher.

Suggested dilution	Recommended dilution
WB	Assay dependent
ICC/IF	Assay dependent
IHC-P	1:100-1:1000
ELISA	Assay dependent
IHC	Assay dependent

Not tested in other applications.

## PROPERTIES

<b>Form</b>	Liquid
<b>Buffer</b>	0.05M Tris, 0.15M NaCl (pH7.4), 1%BSA
<b>Preservative</b>	0.025% ProClin 300
<b>Storage</b>	Store as concentrated solution. Centrifuge briefly prior to opening vial. For short-term storage (1-2 weeks), store at 4°C. For long-term storage, aliquot and store at -20°C or below. Avoid multiple freeze-thaw cycles.
<b>Concentration</b>	0.25 mg/ml (Please refer to the vial label for the specific concentration.)
<b>Immunogen</b>	Highly purified whole mouse IgG
<b>Purification</b>	Purified by antigen-affinity chromatography.
<b>Conjugation</b>	Horseradish peroxidase(HRP)

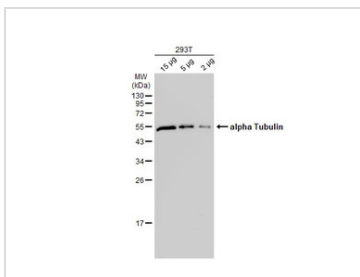
## Note

For laboratory research use only. Not for any clinical, therapeutic, or diagnostic use in humans or animals. Not for animal or human consumption.

Purchasers shall not, and agree not to enable third parties to, analyze, copy, reverse engineer or otherwise attempt to determine the structure or sequence of the product.

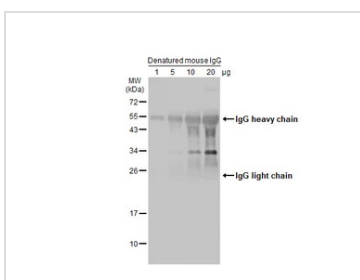
For full product information, images and publications, please visit our [website](#).

DATA IMAGES



**GTX213111-01 WB Image**

Various whole cell extracts were separated by 12% SDS-PAGE, and the membrane was blotted with alpha Tubulin antibody [GT114] (GTX628802) diluted at 1:10000. The HRP-conjugated anti-mouse IgG antibody (GTX213111-01) was used to detect the primary antibody.



**GTX213111-01 WB Image**

Various amounts of denatured mouse IgG protein were separated by 12% SDS-PAGE, and the membrane was blotted with HRP-conjugated anti-rabbit IgG antibody (GTX213110-01) diluted at 1:5000.



**GTX213111-01 IHC-P Image**

E2F1 antibody [16G7] detects E2F1 protein at nucleus in mouse cervix by immunohistochemical analysis.

Sample: Paraffin-embedded mouse cervix.

E2F1 antibody [16G7] (GTX70163) diluted at 1:500.

The signal was developed by Mouse IgG antibody (HRP) (GTX213111-01).

Antigen Retrieval: Citrate buffer, pH 6.0, 15 min



For full product information, images and publications, please visit our [website](#).

## Goat Anti-Mouse IgG antibody (DyLight488)

**Cat. No. GTX213111-04**

<b>Host</b>	Goat
<b>Clonality</b>	Polyclonal
<b>Isotype</b>	IgG
<b>Application</b>	WB, ICC/IF, IHC-P, IHC-Fr, FACS
<b>Reactivity</b>	Mouse

Reference ( 2 )

Package

500 µl

## APPLICATION

**Application Note**

\*Optimal dilutions/concentrations should be determined by the researcher.

Suggested dilution	Recommended dilution
WB	Assay dependent
ICC/IF	1:100-1:2000
IHC-P	Assay dependent
IHC-Fr	1:100-1:1000
FACS	1:50-1:1000

Not tested in other applications.

## PROPERTIES

<b>Form</b>	Liquid
<b>Buffer</b>	PBS
<b>Preservative</b>	No preservative
<b>Storage</b>	Store as concentrated solution. Centrifuge briefly prior to opening vial. For short-term storage (1-2 weeks), store at 4°C. For long-term storage, aliquot and store at -20°C or below. Avoid multiple freeze-thaw cycles. Protect from light.
<b>Concentration</b>	2 mg/ml (Please refer to the vial label for the specific concentration.)
<b>Immunogen</b>	Highly purified whole mouse IgG
<b>Purification</b>	Purified by antigen-affinity chromatography.
<b>Conjugation</b>	DyLight488

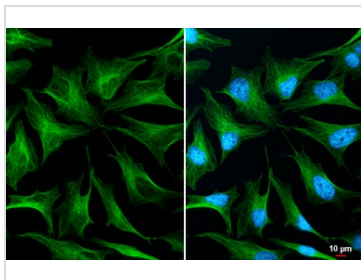
**Note**

For laboratory research use only. Not for any clinical, therapeutic, or diagnostic use in humans or animals. Not for animal or human consumption.

Purchasers shall not, and agree not to enable third parties to, analyze, copy, reverse engineer or otherwise attempt to determine the structure or sequence of the product.

For full product information, images and publications, please visit our [website](#).

## DATA IMAGES

**GTX213111-04 ICC/IF Image**

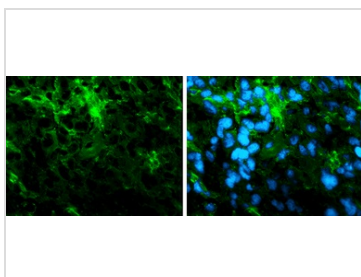
alpha Tubulin antibody [GT114] detects alpha Tubulin protein at cytoskeleton by immunofluorescent analysis.

Sample: HeLa cells were fixed in 4% paraformaldehyde at RT for 15 min.

Green: alpha Tubulin stained by alpha Tubulin antibody (GTX628802) diluted at 1:500.

The signal was developed using Mouse IgG antibody (DyLight488) (GTX213111-04) diluted at 1:1000.

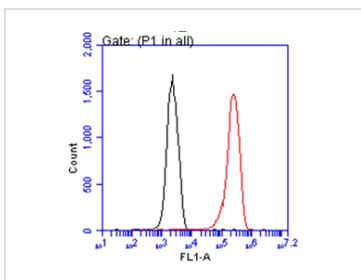
Blue: Fluoroshield with DAPI (GTX30920).

**GTX213111-04 IHC-Fr Image**

Immunofluorescence photomicrographs of frozen sections of mouse brain.

Green: alpha Tubulin antibody [GT114] (GTX628802) diluted at 1:200. The signal was developed using goat anti-mouse IgG antibody (Dylight488) (GTX213111-04).

Blue: Nuclear staining with Hoechst 33342.

**GTX213111-04 FACS Image**

Arginase 1 antibody [GT5811] (GTX134218) detects Arginase 1 protein by flow cytometry analysis.

Sample: HepG2 cell.

Black: Unlabelled sample was used as a control.

Red: Arginase 1 antibody [GT5811] (GTX134218) dilution: 1:50.

Acquisition of 20,000 events were collected using the Mouse IgG antibody (DyLight488) (GTX113111-04) secondary antibody for FACS analysis.



For full product information, images and publications, please visit our [website](#).

## Goat Anti-Mouse IgG antibody (DyLight594)

Cat. No. GTX213111-05

<b>Host</b>	Goat
<b>Clonality</b>	Polyclonal
<b>Isotype</b>	IgG
<b>Application</b>	WB, ICC/IF, IHC-P, IHC-Fr
<b>Reactivity</b>	Mouse

Reference ( 4 )

Package

500 µl

## APPLICATION

## Application Note

\*Optimal dilutions/concentrations should be determined by the researcher.

Suggested dilution	Recommended dilution
WB	Assay dependent
ICC/IF	1:100-1:1000
IHC-P	1:100-1:1000
IHC-Fr	1:100-1:1000

Not tested in other applications.

## PROPERTIES

<b>Form</b>	Liquid
<b>Buffer</b>	PBS
<b>Preservative</b>	No preservative
<b>Storage</b>	Store as concentrated solution. Centrifuge briefly prior to opening vial. For short-term storage (1-2 weeks), store at 4°C. For long-term storage, aliquot and store at -20°C or below. Avoid multiple freeze-thaw cycles. Protect from light.
<b>Concentration</b>	2 mg/ml (Please refer to the vial label for the specific concentration.)
<b>Immunogen</b>	Highly purified whole mouse IgG
<b>Purification</b>	Purified by antigen-affinity chromatography.
<b>Conjugation</b>	DyLight594

## Note

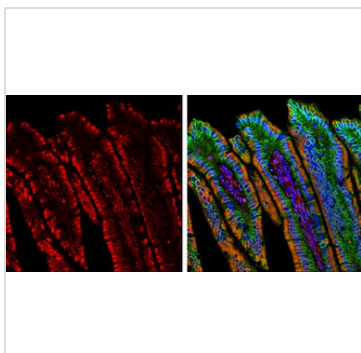
For laboratory research use only. Not for any clinical, therapeutic, or diagnostic use in humans or animals. Not for animal or human consumption.

Purchasers shall not, and agree not to enable third parties to, analyze, copy, reverse engineer or otherwise attempt to determine the structure or sequence of the product.



For full product information, images and publications, please visit our [website](#).

## DATA IMAGES

**GTX213111-05 IHC-P Image**

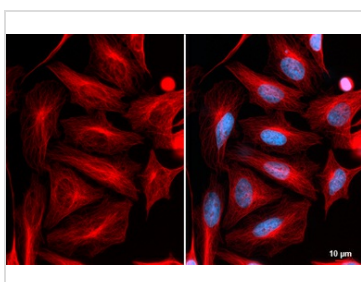
Double-labeled immunofluorescence photomicrographs of paraffin-embedded sections of mouse colon.

Red: alpha Tubulin antibody [GT114] (GTX628802) diluted at 1:500. The signal was developed using goat anti-mouse IgG antibody (Dylight594) (GTX213111-05).

Green: E-Cadherin antibody (GTX100443) diluted at 1:500. The signal was developed using goat anti-rabbit IgG antibody (Dylight488) (GTX213110-04).

Blue: Fluoroshield with DAPI (GTX30920).

Antigen Retrieval: Citrate buffer, pH 6.0, 15 min

**GTX213111-05 ICC/IF Image**

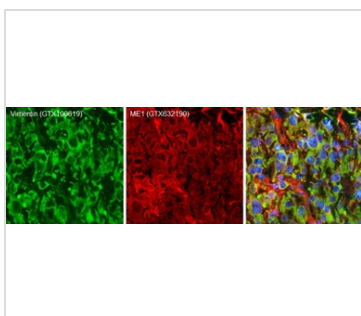
alpha Tubulin antibody [GT114] detects alpha Tubulin protein at cytoskeleton by immunofluorescent analysis.

Sample: HeLa cells were fixed in 4% paraformaldehyde at RT for 15 min.

Red: alpha Tubulin stained by alpha Tubulin antibody (GTX628802) diluted at 1:500.

The signal was developed using Mouse IgG antibody (DyLight594) (GTX213111-05) diluted at 1:2000.

Blue: Fluoroshield with DAPI (GTX30920).

**GTX213111-05 IHC-Fr Image**

Double-labeled immunofluorescence photomicrographs of frozen sections of mouse brain.

Green: Vimentin antibody (GTX100619) diluted at 1:200. The signal was developed using goat anti-rabbit IgG antibody (Dylight488) (GTX213110-04).

Red: ME1 antibody [GT15611] (GTX632190) diluted at 1:200. The signal was developed using goat anti-mouse IgG antibody (Dylight594) (GTX213111-05).

Blue: Nuclear staining with Hoechst 33342.



For full product information, images and publications, please visit our [website](#).