



# SZABO SCANDIC

Part of Europa Biosite

## Produktinformation



Forschungsprodukte & Biochemikalien



Zellkultur & Verbrauchsmaterial



Diagnostik & molekulare Diagnostik



Laborgeräte & Service

Weitere Information auf den folgenden Seiten!  
See the following pages for more information!



### Lieferung & Zahlungsart

siehe unsere [Liefer- und Versandbedingungen](#)

### Zuschläge

- Mindermengenzuschlag
- Trockeneiszuschlag
- Gefahrgutzuschlag
- Expressversand

### SZABO-SCANDIC HandelsgmbH

Quellenstraße 110, A-1100 Wien

T. +43(0)1 489 3961-0

F. +43(0)1 489 3961-7

[mail@szabo-scandic.com](mailto:mail@szabo-scandic.com)

[www.szabo-scandic.com](http://www.szabo-scandic.com)

[linkedin.com/company/szaboscandic](https://www.linkedin.com/company/szaboscandic) 

## EP300 antibody [RW128]

**Cat. No. GTX30614**

<b>Host</b>	Mouse
<b>Clonality</b>	Monoclonal
<b>Isotype</b>	IgG1
<b>Application</b>	WB, ICC/IF, FACS, IP
<b>Reactivity</b>	Human, Mouse, Rat, Mustelid, Primate

**Package**  
100 µg

## APPLICATION

**Application Note**

\*Optimal dilutions/concentrations should be determined by the researcher.

Suggested dilution	Recommended dilution
WB	1:250 - 1:500
ICC/IF	1:10 - 1:2000
FACS	1 µg/ml
IP	1:10 - 1:500

Not tested in other applications.

**Calculated MW** 264 kDa. ([Note](#))

## PROPERTIES

<b>Form</b>	Liquid
<b>Buffer</b>	PBS
<b>Preservative</b>	0.1% Sodium azide
<b>Storage</b>	Store as concentrated solution. Centrifuge briefly prior to opening vial. For short-term storage (1-2 weeks), store at 4°C. For long-term storage, aliquot and store at -20°C or below. Avoid multiple freeze-thaw cycles.
<b>Concentration</b>	1 mg/ml (Please refer to the vial label for the specific concentration.)
<b>Immunogen</b>	Fusion protein containing residues 1572-2371 of human KAT3B/p300. [UniProt# Q0947]
<b>Purification</b>	Protein A purified
<b>Conjugation</b>	Unconjugated

**Note**

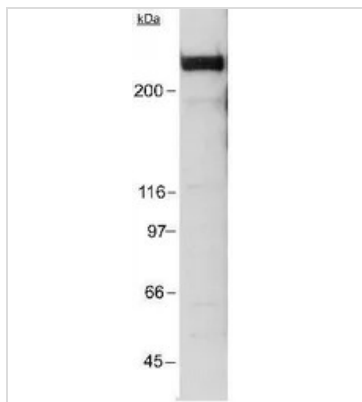
For laboratory research use only. Not for any clinical, therapeutic, or diagnostic use in humans or animals. Not for animal or human consumption.

Purchasers shall not, and agree not to enable third parties to, analyze, copy, reverse engineer or otherwise attempt to determine the structure or sequence of the product.



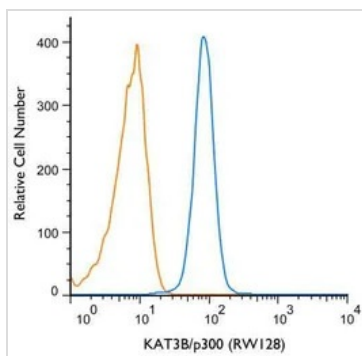
For full product information, images and publications, please visit our [website](#).

## DATA IMAGES

**GTX30614 WB Image**

WB analysis of HeLa nuclear extract using GTX30614 EP300 antibody [RW128].

Dilution : 1:250

**GTX30614 FACS Image**

FACS (Intracellular staining) analysis of THP-1 cells using GTX30614 EP300 antibody [RW128].

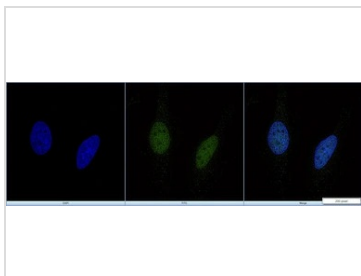
Blue : Primary antibody

Orange : isotype control

Dilution : 1 µg/mL

Fixation : 4% PFA

Permibilization : 0.1% saponin

**GTX30614 ICC/IF Image**

ICC/IF analysis of PFA-fixed HeLa cells using GTX30614 EP300 antibody [RW128].

Green : Primary antibody

Blue : DAPI

Permeabilization : 0.05% Triton X-100 in PBS

Dilution : 5 µg/mL



For full product information, images and publications, please visit our [website](#).