



SZABO SCANDIC

Part of Europa Biosite

Produktinformation



Forschungsprodukte & Biochemikalien



Zellkultur & Verbrauchsmaterial



Diagnostik & molekulare Diagnostik



Laborgeräte & Service

Weitere Information auf den folgenden Seiten!
See the following pages for more information!



Lieferung & Zahlungsart

siehe unsere [Liefer- und Versandbedingungen](#)

Zuschläge

- Mindermengenzuschlag
- Trockeneiszuschlag
- Gefahrgutzuschlag
- Expressversand

SZABO-SCANDIC HandelsgmbH

Quellenstraße 110, A-1100 Wien

T. +43(0)1 489 3961-0

F. +43(0)1 489 3961-7

mail@szabo-scandic.com

www.szabo-scandic.com

[linkedin.com/company/szaboscandic](https://www.linkedin.com/company/szaboscandic) 

EP300 antibody [RW105]

Cat. No. GTX30618

Host	Mouse
Clonality	Monoclonal
Isotype	IgG1
Application	WB, ICC/IF, FACS, IP, ChIP assay, EM, in vitro
Reactivity	Human, Mouse, Rat, Mustelid, Primate

Reference (1)

Package

100 µg

APPLICATION

Application Note

*Optimal dilutions/concentrations should be determined by the researcher.

Suggested dilution	Recommended dilution
WB	1:250 - 1:500
ICC/IF	1:50 - 1:200
FACS	Assay dependent
IP	1:10 - 1:500
ChIP assay	Assay dependent
EM	Assay dependent
in vitro	Assay dependent

Not tested in other applications.

Calculated MW 264 kDa. ([Note](#))**Product Note** This is specific for p300 protein. This recognizes residues 1921-2023.

PROPERTIES

Form	Liquid
Buffer	PBS pH7.4
Preservative	0.1% Sodium azide
Storage	Store as concentrated solution. Centrifuge briefly prior to opening vial. For short-term storage (1-2 weeks), store at 4°C. For long-term storage, aliquot and store at -20°C or below. Avoid multiple freeze-thaw cycles.
Concentration	1 mg/ml (Please refer to the vial label for the specific concentration.)
Immunogen	Fusion protein containing residues 1572-2371 of human KAT3B/p300. [UniProt# Q0947]
Purification	Protein G purified



For full product information, images and publications, please visit our [website](#).

Conjugation

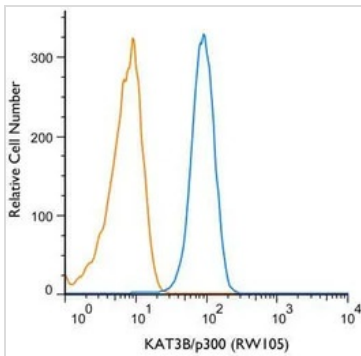
Unconjugated

For laboratory research use only. Not for any clinical, therapeutic, or diagnostic use in humans or animals. Not for animal or human consumption.

Note

Purchasers shall not, and agree not to enable third parties to, analyze, copy, reverse engineer or otherwise attempt to determine the structure or sequence of the product.

DATA IMAGES



GTX30618 FACS Image

FACS (Intracellular staining) analysis of THP-1 cells using GTX30618 EP300 antibody [RW105].

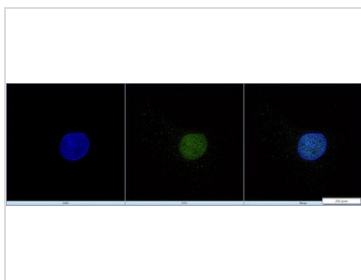
Blue : Primary antibody

Orange : isotype control

Dilution : 1 µg/mL

Fixation : 4% PFA

Permibilization : 0.1% saponin



GTX30618 ICC/IF Image

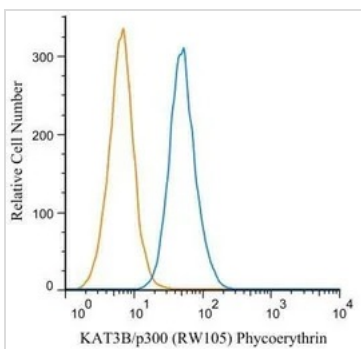
ICC/IF analysis of PFA-fixed HeLa cells using GTX30618 EP300 antibody [RW105].

Green : Primary antibody

Blue : DAPI

Permeabilization : 0.05% Triton X-100 in PBS

Dilution : 5 µg/mL



GTX30618 FACS Image

FACS (Intracellular staining) analysis of RAW264.7 cells using GTX30618 EP300 antibody [RW105].

Blue : Primary antibody

Orange : isotype control

Dilution : 2 µg/mL

Fixation : 4% PFA

Permibilization : 0.1% saponin



For full product information, images and publications, please visit our [website](#).