



SZABO SCANDIC

Part of Europa Biosite

Produktinformation



Forschungsprodukte & Biochemikalien



Zellkultur & Verbrauchsmaterial



Diagnostik & molekulare Diagnostik



Laborgeräte & Service

Weitere Information auf den folgenden Seiten!
See the following pages for more information!



Lieferung & Zahlungsart

siehe unsere [Liefer- und Versandbedingungen](#)

Zuschläge

- Mindermengenzuschlag
- Trockeneiszuschlag
- Gefahrgutzuschlag
- Expressversand

SZABO-SCANDIC HandelsgmbH

Quellenstraße 110, A-1100 Wien

T. +43(0)1 489 3961-0

F. +43(0)1 489 3961-7

mail@szabo-scandic.com

www.szabo-scandic.com

[linkedin.com/company/szaboscandic](https://www.linkedin.com/company/szaboscandic) 

LRRK2 antibody

Cat. No. GTX30678

Host	Rabbit
Clonality	Polyclonal
Isotype	IgG
Application	WB, ICC/IF, IHC-P, IHC-Fr, FACS, IP
Reactivity	Human, Mouse, Bovine, Caenorhabditis elegans

Package

100 µl

APPLICATION

Application Note

*Optimal dilutions/concentrations should be determined by the researcher.

Suggested dilution	Recommended dilution
WB	1:2000 - 1:5000
ICC/IF	1:1000 - 1:2000
IHC-P	1:500 - 1:1000
IHC-Fr	Assay dependent
FACS	1:200
IP	1:10 - 1:500

Not tested in other applications.

Calculated MW 286 kDa. ([Note](#))

PROPERTIES

Form	Liquid
Buffer	Tris-Citrate/Phosphate pH7.0-8.0
Preservative	0.1% Sodium azide
Storage	Store as concentrated solution. Centrifuge briefly prior to opening vial. Store at 4°C. DO NOT FREEZE.
Concentration	1 mg/ml (Please refer to the vial label for the specific concentration.)
Immunogen	A C-terminal synthetic peptide made to the human LRRK2 protein sequence (between residues 2500-2527). [UniProt# Q5S007]
Purification	Purified by antigen-affinity chromatography
Conjugation	Unconjugated



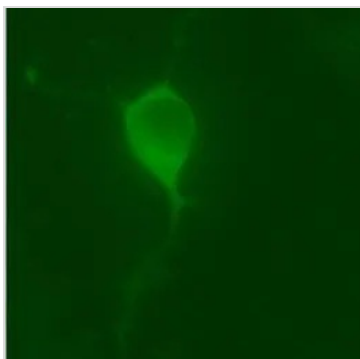
For full product information, images and publications, please visit our [website](#).

For laboratory research use only. Not for any clinical, therapeutic, or diagnostic use in humans or animals. Not for animal or human consumption.

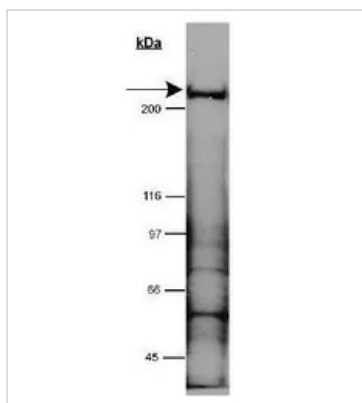
Note

Purchasers shall not, and agree not to enable third parties to, analyze, copy, reverse engineer or otherwise attempt to determine the structure or sequence of the product.

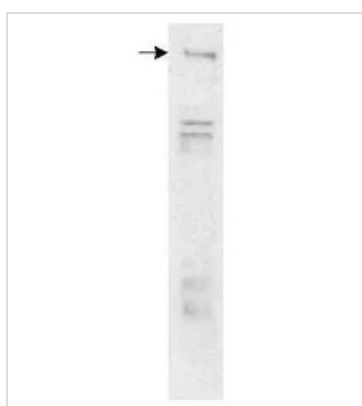
DATA IMAGES

**GTX30678 ICC/IF Image**

ICC/IF analysis of mouse CAD cells overexpressing human LRRK2 using GTX30678 LRRK2 antibody.
Dilution : 1:2000

**GTX30678 WB Image**

WB analysis of HeLa cell lysate (in RIPA buffer) using GTX30678 LRRK2 antibody.
Dilution : 1:5000

**GTX30678 WB Image**

WB analysis of bovine brain membrane extract using GTX30678 LRRK2 antibody.
Loading : 50µg



For full product information, images and publications, please visit our [website](#).