



# SZABO SCANDIC

Part of Europa Biosite

## Produktinformation



Forschungsprodukte & Biochemikalien



Zellkultur & Verbrauchsmaterial



Diagnostik & molekulare Diagnostik



Laborgeräte & Service

Weitere Information auf den folgenden Seiten!  
See the following pages for more information!



### Lieferung & Zahlungsart

siehe unsere [Liefer- und Versandbedingungen](#)

### Zuschläge

- Mindermengenzuschlag
- Trockeneiszuschlag
- Gefahrgutzuschlag
- Expressversand

### SZABO-SCANDIC HandelsgmbH

Quellenstraße 110, A-1100 Wien

T. +43(0)1 489 3961-0

F. +43(0)1 489 3961-7

[mail@szabo-scandic.com](mailto:mail@szabo-scandic.com)

[www.szabo-scandic.com](http://www.szabo-scandic.com)

[linkedin.com/company/szaboscandic](https://www.linkedin.com/company/szaboscandic) 

## Cytokeratin 5 antibody [RM226]

**Cat No. GTX33612**

<b>Host</b>	Rabbit
<b>Clonality</b>	Monoclonal
<b>Isotype</b>	IgG
<b>Application</b>	WB, IHC
<b>Reactivity</b>	Human

**Package**  
100 µl

## APPLICATION

**Application Note**

Immunohistochemistry (IHC): 1:100 dilution, Western Blot (WB): 1:1000 dilution.

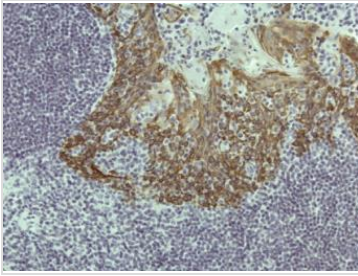
**Calculated MW** 62 kDa. ([Note](#))**Specificity/Sensitivity** This antibody reacts to Human Cytokeratin 5. This antibody may also react to bovine, mouse, or rat Cytokeratin, as predicted by immunogen homology.

## PROPERTIES

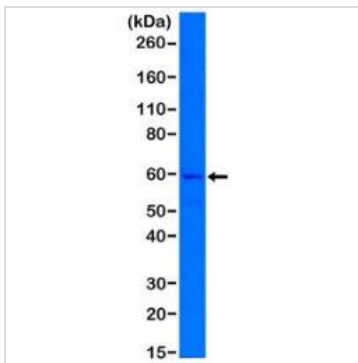
<b>Form</b>	Liquid
<b>Buffer</b>	50% Glycerol/PBS with 1% BSA and 0.09% sodium azide
<b>Storage</b>	Store as concentrated solution. Centrifuge briefly prior to opening vial. For short-term storage (1-2 weeks), store at 4°C. For long-term storage, aliquot and store at -20°C or below. Avoid multiple freeze-thaw cycles.
<b>Concentration</b>	Batch dependent (Please refer to the vial label for the specific concentration.)
<b>Immunogen</b>	A peptide corresponding to the C-terminus of Human Cytokeratin 5
<b>Purification</b>	Protein A affinity purified from an animal origin-free culture supernatant
<b>Conjugation</b>	Unconjugated
<b>Note</b>	For laboratory use only. Not for any clinical, therapeutic, or diagnostic use in humans or animals. Not for animal or human consumption.

For full product information, images and publications, please visit our [website](#).

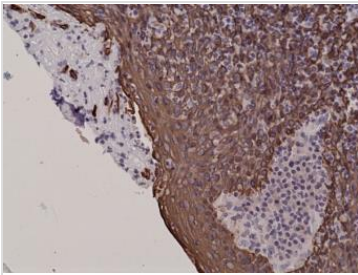
## DATA IMAGES

**GTX33612 IHC Image**

Immunohistochemical staining of FFPE human tonsil tissue sections, using Anti-Cytokeratin 5 Rabbit Monoclonal antibody RM226.

**GTX33612 WB Image**

Western Blot of A431 cell lysates using RM226, showed a band of Cytokeratin 5 expressed in A431 cells.

**GTX33612 IHC Image**

Immunohistochemical staining of FFPE human tonsil tissue sections, using Anti-Cytokeratin 5 Rabbit Monoclonal antibody RM226.



For full product information, images and publications, please visit our [website](#).