



# SZABO SCANDIC

Part of Europa Biosite

## Produktinformation



Forschungsprodukte & Biochemikalien



Zellkultur & Verbrauchsmaterial



Diagnostik & molekulare Diagnostik



Laborgeräte & Service

Weitere Information auf den folgenden Seiten!  
See the following pages for more information!



### Lieferung & Zahlungsart

siehe unsere [Liefer- und Versandbedingungen](#)

### Zuschläge

- Mindermengenzuschlag
- Trockeneiszuschlag
- Gefahrgutzuschlag
- Expressversand

### SZABO-SCANDIC HandelsgmbH

Quellenstraße 110, A-1100 Wien

T. +43(0)1 489 3961-0

F. +43(0)1 489 3961-7

[mail@szabo-scandic.com](mailto:mail@szabo-scandic.com)

[www.szabo-scandic.com](http://www.szabo-scandic.com)

[linkedin.com/company/szaboscandic](https://www.linkedin.com/company/szaboscandic) 

## Her2 / ErbB2 antibody [RM228]

**Cat No. GTX33616**

<b>Host</b>	Rabbit
<b>Clonality</b>	Monoclonal
<b>Isotype</b>	IgG
<b>Application</b>	WB, IHC
<b>Reactivity</b>	Human

**Package**  
100 µl

## APPLICATION

**Application Note**

Immunohistochemistry (IHC): 1:100 dilution, Western Blot (WB): 1:1000 dilution.

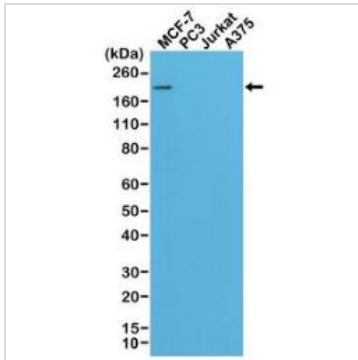
**Calculated MW** 138 kDa. ([Note](#))**Specificity/Sensitivity** This antibody reacts to Human c-erbB-2/HER-2. This antibody may also react to mouse or rat c-erbB-2/HER-2, as predicted by immunogen homology.

## PROPERTIES

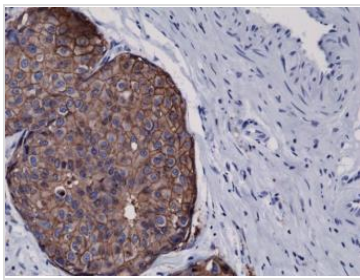
<b>Form</b>	Liquid
<b>Buffer</b>	50% Glycerol/PBS with 1% BSA and 0.09% sodium azide
<b>Storage</b>	Store as concentrated solution. Centrifuge briefly prior to opening vial. For short-term storage (1-2 weeks), store at 4°C. For long-term storage, aliquot and store at -20°C or below. Avoid multiple freeze-thaw cycles.
<b>Concentration</b>	Batch dependent (Please refer to the vial label for the specific concentration.)
<b>Immunogen</b>	A peptide corresponding to the C-terminus of Human c-erbB-2/HER-2
<b>Purification</b>	Protein A affinity purified from an animal origin-free culture supernatant
<b>Conjugation</b>	Unconjugated
<b>Note</b>	For laboratory use only. Not for any clinical, therapeutic, or diagnostic use in humans or animals. Not for animal or human consumption.

For full product information, images and publications, please visit our [website](#).

## DATA IMAGES

**GTX33616 WB Image**

Western Blot of MCF-7, PC3, Jurkat, and A375 cell lysates using RM228, showed a band of Her2 expressed only in MCF-7 cells.

**GTX33616 IHC Image**

Immunohistochemical staining of FFPE human breast cancer tissue sections, using Anti-HER2 (c-erbB-2) Rabbit Monoclonal antibody RM228.



For full product information, images and publications, please visit our [website](#).