



SZABO SCANDIC

Part of Europa Biosite

Produktinformation



Forschungsprodukte & Biochemikalien



Zellkultur & Verbrauchsmaterial



Diagnostik & molekulare Diagnostik



Laborgeräte & Service

Weitere Information auf den folgenden Seiten!
See the following pages for more information!



Lieferung & Zahlungsart

siehe unsere [Liefer- und Versandbedingungen](#)

Zuschläge

- Mindermengenzuschlag
- Trockeneiszuschlag
- Gefahrgutzuschlag
- Expressversand

SZABO-SCANDIC HandelsgmbH

Quellenstraße 110, A-1100 Wien

T. +43(0)1 489 3961-0

F. +43(0)1 489 3961-7

mail@szabo-scandic.com

www.szabo-scandic.com

[linkedin.com/company/szaboscandic](https://www.linkedin.com/company/szaboscandic) 

alpha Smooth Muscle Actin antibody [α sm-1]**Cat No. GTX44499**

Host	Mouse
Clonality	Monoclonal
Isotype	IgG2a
Application	IHC-P
Reactivity	Human

Package
500 μ l

APPLICATION

Application Note

*Optimal dilutions/concentrations should be determined by the researcher.

Suggested dilution	Dilution
IHC-P	1:50

Note : The recommended fixative is 10% neutral-buffered formalin for paraffin-embedded tissue sections.

Not tested in other applications.

Calculated MW 42 kDa. ([Note](#))

Specificity/Sensitivity Reactive with smooth muscle cells in blood vessel walls, gut wall, myometrium and arrectores pili of skin. Myoepithelial cells such as those in breast and salivary gland also contain actin.

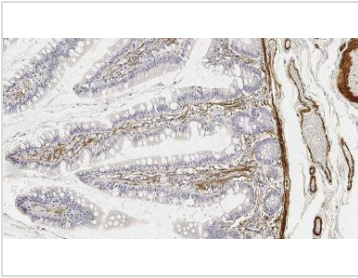
PROPERTIES

Form	Liquid
Buffer	PBS pH 7.6, 1% BSA, sodium azide
Storage	Store as concentrated solution. Centrifuge briefly prior to opening vial. Store at 4°C. DO NOT FREEZE.
Concentration	>4.5 μ g/ml (Please refer to the vial label for the specific concentration.)
Immunogen	Synthetic amino terminal decapeptide of alpha smooth muscle isoform of actin.
Purification	IgG fraction
Conjugation	Unconjugated
Note	For laboratory use only. Not for any clinical, therapeutic, or diagnostic use in humans or animals. Not for animal or human consumption.



For full product information, images and publications, please visit our [website](#).

DATA IMAGES

**GTX44499 IHC-P Image**

IHC-P analysis of human small bowel tissue using GTX44499 alpha Smooth Muscle Actin antibody [α sm-1]. Note cytoplasmic staining of the muscularis mucosa, vascular walls and smooth muscle fibers in the lamina propria.



For full product information, images and publications, please visit our [website](#).