



SZABO SCANDIC

Part of Europa Biosite

Produktinformation



Forschungsprodukte & Biochemikalien



Zellkultur & Verbrauchsmaterial



Diagnostik & molekulare Diagnostik



Laborgeräte & Service

Weitere Information auf den folgenden Seiten!
See the following pages for more information!



Lieferung & Zahlungsart

siehe unsere [Liefer- und Versandbedingungen](#)

Zuschläge

- Mindermengenzuschlag
- Trockeneiszuschlag
- Gefahrgutzuschlag
- Expressversand

SZABO-SCANDIC HandelsgmbH

Quellenstraße 110, A-1100 Wien

T. +43(0)1 489 3961-0

F. +43(0)1 489 3961-7

mail@szabo-scandic.com

www.szabo-scandic.com

[linkedin.com/company/szaboscandic](https://www.linkedin.com/company/szaboscandic) 

Human Matched Pair Tissue Array - Brain (Alzheimer's Disease + Normal)

Cat No. GTX49382

Application	IHC-P
Reactivity	Human

Package
5 slide

PRODUCT

Product Description

GeneTex's Alzheimer diseased brain tissue panels are designed for rapidly screening Alzheimer's disease-specific genes or proteins in brain tissues. Paraffin-embedded tissues are arrayed on positively charged glass slides(5 µm in thickness). This product contains both Alzheimer's diseased brain tissues and normal brain tissues. GeneTex's tissue products are based on the sample repository network established following the IRB-approved ethical standard and procedures. The repository covers a wide variety of species and diseases, including human adult and fetal normal tissues, human diseased and tumor tissues, as well as mouse, rat, and monkey tissues. The tissues are immediately put in liquid nitrogen after being excised, and then identified by a board-licensed pathologist. Patient demographic and disease related history data are available.

Tissue type Neurological Disease

APPLICATION

Application Note

*Optimal dilutions/concentrations should be determined by the researcher.

Suggested dilution	Dilution
IHC-P	Assay dependent

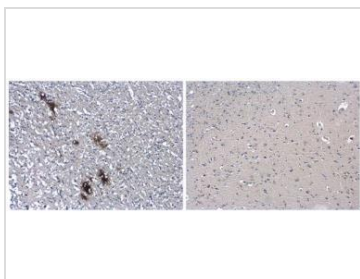
Not tested in other applications.

PROPERTIES

Storage Cool dry at room temperature. 4°C for long term storage.

Note For laboratory use only. Not for any clinical, therapeutic, or diagnostic use in humans or animals. Not for animal or human consumption.

DATA IMAGES



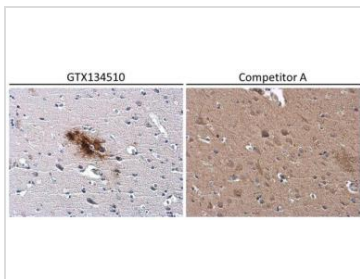
GTX49382 IHC-P Image

Beta amyloid (1-42) antibody (conformation specific) detects beta amyloid protein aggregates by immunohistochemical analysis in the occipital lobe of Alzheimer's disease brain (left), but not in normal human brain(right).

Sample: Paraffin-embedded Human Brain (Alzheimer's Disease + Normal) tissue slides (GTX49382).
beta amyloid protein aggregates stained by beta amyloid (1-42) antibody – Conformation Specific (GTX49382) diluted at 1:500.



For full product information, images and publications, please visit our [website](#).

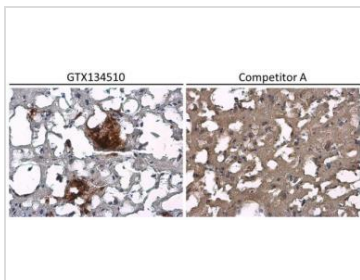


GTX49382 IHC-P Image

Conformation-specific beta amyloid antibody detects beta amyloid protein aggregates in the occipital lobe of human Alzheimer's disease brain by immunohistochemical analysis.

Antibodies: beta amyloid (1-42) antibody – Conformation Specific (GTX134510) diluted at 1:500, and competitor's antibody diluted at 1:500.

*Competitor's antibody is not affiliated with GeneTex and does not endorse this product.

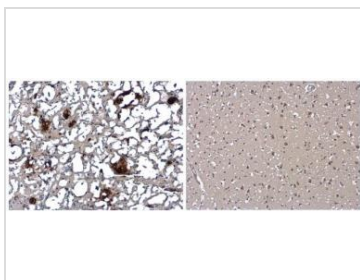


GTX49382 IHC-P Image

Conformation-specific beta amyloid antibody detects beta amyloid protein aggregates in the postcentral gyrus of human Alzheimer's disease brain by immunohistochemical analysis.

Antibodies: beta amyloid (1-42) antibody – Conformation Specific (GTX134510) diluted at 1:500, and competitor's antibody diluted at 1:500.

*Competitor's antibody is not affiliated with GeneTex and does not endorse this product.



GTX49382 IHC-P Image

Beta amyloid (1-42) antibody (conformation specific) detects beta amyloid protein aggregates by immunohistochemical analysis in the postcentral gyrus of Alzheimer's disease brain (left), but not in normal human brain(right).

Sample: Paraffin-embedded Human Brain (Alzheimer's Disease + Normal) tissue slides (GTX49382). beta amyloid protein aggregates stained by beta amyloid (1-42) antibody – Conformation Specific (GTX49382) diluted at 1:500.

Item	Tissue name	Pathological Diagnosis
1	Precentral gyrus	Alzheimer's Disease
2	Precentral gyrus	Normal Precentral gyrus
3	Postcentral gyrus	Alzheimer's Disease
4	Postcentral gyrus	Normal Postcentral gyrus
5	Occipital lobe	Alzheimer's Disease
6	Occipital lobe	Normal Occipital lobe
7	Cerebellum	Alzheimer's Disease
8	Cerebellum	Normal Cerebellum

GTX49382 Image

10µg of GTX109135-pro Galectin 2 recombinant protein analyzed using SDS-PAGE and stained with coomassie blue and captured by black and white camera.



For full product information, images and publications, please visit our [website](#).