



# SZABO SCANDIC

Part of Europa Biosite

## Produktinformation



Forschungsprodukte & Biochemikalien



Zellkultur & Verbrauchsmaterial



Diagnostik & molekulare Diagnostik



Laborgeräte & Service

Weitere Information auf den folgenden Seiten!  
See the following pages for more information!



### Lieferung & Zahlungsart

siehe unsere [Liefer- und Versandbedingungen](#)

### Zuschläge

- Mindermengenzuschlag
- Trockeneiszuschlag
- Gefahrgutzuschlag
- Expressversand

### SZABO-SCANDIC HandelsgmbH

Quellenstraße 110, A-1100 Wien

T. +43(0)1 489 3961-0

F. +43(0)1 489 3961-7

[mail@szabo-scandic.com](mailto:mail@szabo-scandic.com)

[www.szabo-scandic.com](http://www.szabo-scandic.com)

[linkedin.com/company/szaboscandic](https://www.linkedin.com/company/szaboscandic) 

# Trident Prestained Protein Ladder (Standard Range)

Cat No. GTX49384

Application WB

Reference ( 1 )

Package

500 µl

## PRODUCT

### Product Description

The GTX49384 Trident Prestained Protein Ladder (Standard Range) is a ready-to-use three-color protein standard with 10 pre-stained proteins covering a wide range of molecular weights from 10 to 180 kDa in Tris-Glycine Buffer (9 to 170 kDa in Bis-Tris (MOPS) buffer and 10 to 180 kDa Bis-Tris (MES) buffer). Proteins are covalently coupled with a blue chromophore except for two reference bands (one green and one red band at 25 kDa and 75 kDa respectively) when separated on SDS-PAGE (Tris-Glycine buffer). GTX49384 Trident Prestained Protein Ladder is designed for monitoring protein separation during SDS-polyacrylamide gel electrophoresis, verification of Western transfer efficiency on membranes (PVDF, nylon, or nitrocellulose) and for approximating the size of proteins.

## APPLICATION

### Application Note

Under suggested conditions, Trident Prestained Protein Ladder resolves 10 major bands in 15% SDS-PAGE (Tris-Glycine buffer) and after Western blotting to nitrocellulose membrane. 5 µl per loading for clear visualization during electrophoresis on a 15-well or 10-well mini-gel.

## PROPERTIES

Form Liquid

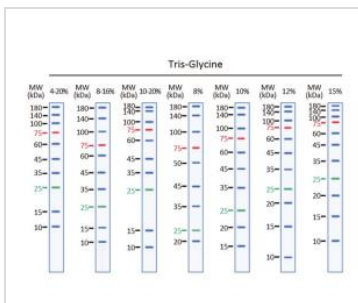
Buffer 20 mM Tris-phosphate pH 7.5, 2% SDS, 0.2 mM DTT, 3.6 M urea, 15% (v/v) glycerol

Storage For short-term storage, store at 4°C (up to 3 months). For long-term storage, aliquot and store at -20°C or below. Avoid multiple freeze-thaw cycles.

Concentration 0.1~0.4 mg/ml (Please refer to the vial label for the specific concentration.)

Note For laboratory use only. Not for any clinical, therapeutic, or diagnostic use in humans or animals. Not for animal or human consumption.

## DATA IMAGES

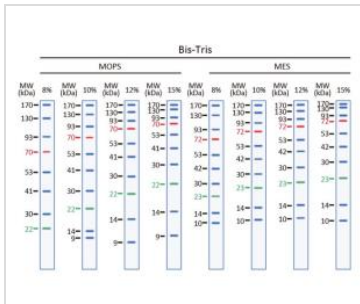


### GTX49384 Image

Migration pattern of GTX49384 Trident Prestained Protein Ladder (Standard Range) in Tris-Glycine gel.



For full product information, images and publications, please visit our [website](#).


**GTX49384 Image**

Migration pattern of GTX49384 Trident Prestained Protein Ladder (Standard Range) in Bis-Tris- gel.



For full product information, images and publications, please visit our [website](http://www.genetex.com).