



# SZABO SCANDIC

Part of Europa Biosite

## Produktinformation



Forschungsprodukte & Biochemikalien



Zellkultur & Verbrauchsmaterial



Diagnostik & molekulare Diagnostik



Laborgeräte & Service

Weitere Information auf den folgenden Seiten!  
See the following pages for more information!



### Lieferung & Zahlungsart

siehe unsere [Liefer- und Versandbedingungen](#)

### Zuschläge

- Mindermengenzuschlag
- Trockeneiszuschlag
- Gefahrgutzuschlag
- Expressversand

### SZABO-SCANDIC HandelsgmbH

Quellenstraße 110, A-1100 Wien

T. +43(0)1 489 3961-0

F. +43(0)1 489 3961-7

[mail@szabo-scandic.com](mailto:mail@szabo-scandic.com)

[www.szabo-scandic.com](http://www.szabo-scandic.com)

[linkedin.com/company/szaboscandic](https://www.linkedin.com/company/szaboscandic) 

# Trident Prestained Protein Ladder (High Range)

**Cat No. GTX50875**

**Application** WB

Reference ( 5 )  
 Package  
 500 µl

## PRODUCT

### Product Description

The Prestained Protein Ladder is a three-color protein standard with 12 pre-stained proteins covering a wide range molecular weights from 10 to 245 kDa. Proteins are covalently coupled with a blue chromophore except for two reference bands (one green and one red band at 25 kDa and 75 kDa respectively) when separated on SDS-PAGE (Tris-glycine buffer). The Prestained Protein Ladder is designed for monitoring protein separation during SDS-polyacrylamide gel electrophoresis, verification of Western transfer efficiency on membranes (PVDF, nylon, or nitrocellulose) and for approximating the size of proteins. The ladder is supplied in gel loading buffer and is ready to use.

## APPLICATION

### Application Note

Under suggested conditions, Prestained Protein Ladder resolves 12 major bands in 15% SDS-PAGE (Trisglycine buffer) and after Western blotting to nitrocellulose membrane.

## PROPERTIES

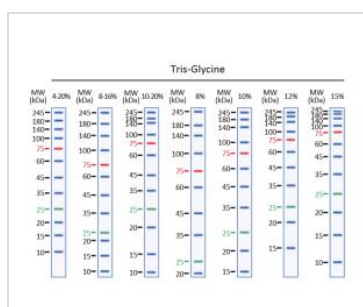
**Form** Liquid

**Buffer** 20 mM Tris-phosphate, pH 7.5 at 25°C), 2 % SDS, 1 mM Dithiothreitol, 3.6 M Urea, and 15 % (v/v) Glycerol

**Storage** Store at 4°C short term (3 months). For extended storage aliquot and store at -20°C or below. Avoid freeze-thaw cycles.

**Note** For laboratory use only. Not for any clinical, therapeutic, or diagnostic use in humans or animals. Not for animal or human consumption.

## DATA IMAGES

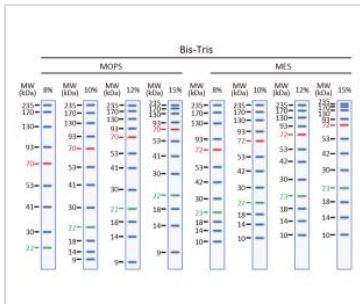


### GTX50875 Image

10µg of GTX109135-pro Galectin 2 recombinant protein analyzed using SDS-PAGE and stained with coomassie blue and captured by black and white camera.



For full product information, images and publications, please visit our [website](#).


**GTX50875 Image**

10µg of GTX109135-pro Galectin 2 recombinant protein analyzed using SDS-PAGE and stained with coomassie blue and captured by black and white camera.



For full product information, images and publications, please visit our [website](#).