



SZABO SCANDIC

Part of Europa Biosite

Produktinformation



Forschungsprodukte & Biochemikalien



Zellkultur & Verbrauchsmaterial



Diagnostik & molekulare Diagnostik



Laborgeräte & Service

Weitere Information auf den folgenden Seiten!
See the following pages for more information!



Lieferung & Zahlungsart

siehe unsere [Liefer- und Versandbedingungen](#)

Zuschläge

- Mindermengenzuschlag
- Trockeneiszuschlag
- Gefahrgutzuschlag
- Expressversand

SZABO-SCANDIC HandelsgmbH

Quellenstraße 110, A-1100 Wien

T. +43(0)1 489 3961-0

F. +43(0)1 489 3961-7

mail@szabo-scandic.com

www.szabo-scandic.com

[linkedin.com/company/szaboscandic](https://www.linkedin.com/company/szaboscandic)

Turbo HRV 3C Protease (active)

Cat. No. GTX53470-pro

Application	Functional Assay
Species	Human rhinovirus

Package
1 mg

PRODUCT

Summary

Turbo3C Protease (HRV 3C Protease) is a cysteine protease that recognizes the cleavage site of Leu-Glu-Val-Leu-Phe-Gln-Gly-Pro and cleaves between Gln and Gly. The recombinant Turbo3C Protease is a restriction grade HRV3C protease that has robust activity at 4°C and high specific activity. Turbo3C Protease is a 47 kDa protein with both GST and His tags so it can be removed by either Ni chelating or Glutathione (GSH) resin.

APPLICATION

Application Note

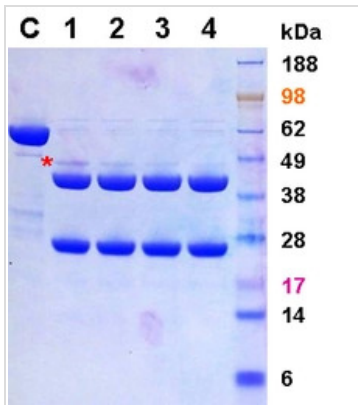
> 1 Units/μg. 1 Unit of Turbo HRV 3C Protease cleaves >95 % of 100 μg of target protein at 4°C for 16 hours. (For detail information, please refer to the protocol)

PROPERTIES

Form	Liquid
Buffer	50mM Tris-HCl, 150mM NaCl, 1mM TCEP, 50% Glycerol
Preservative	No preservative
Storage	Store as concentrated solution. Aliquot and store at -20°C or below. Avoid freeze-thaw cycles.
Concentration	2 mg/ml (Please refer to the vial label for the specific concentration.)
Expression System	E. coli
Endotoxin	< 5 EU/mg by Charles River EndoSafe-PTS
Conjugation	Unconjugated
Note	For In vitro laboratory use only. Not for any clinical, therapeutic, or diagnostic use in humans or animals. Not for animal or human consumption.



For full product information, images and publications, please visit our [website](#).

DATA IMAGES

GTX53470-pro Image

A 68 kDa GST-fusion protein (C) at 1 mg/ml is incubated with Turbo3C (HRV3C) Protease (*) at a ratio of (1) 1:50, (2) 1:100, (3) 1:200, (4) 1:400 (w/w) in a buffer of 25 mM Tris-HCl, pH8.0, 150 mM NaCl, 14 mM b-mercaptoethanol at 4oC for 16 hours. The cleaved products are 42 kDa and 26 kDa



For full product information, images and publications, please visit our [website](#).