



# SZABO SCANDIC

Part of Europa Biosite

## Produktinformation



Forschungsprodukte & Biochemikalien



Zellkultur & Verbrauchsmaterial



Diagnostik & molekulare Diagnostik



Laborgeräte & Service

Weitere Information auf den folgenden Seiten!  
See the following pages for more information!



### Lieferung & Zahlungsart

siehe unsere [Liefer- und Versandbedingungen](#)

### Zuschläge

- Mindermengenzuschlag
- Trockeneiszuschlag
- Gefahrgutzuschlag
- Expressversand

### SZABO-SCANDIC HandelsgmbH

Quellenstraße 110, A-1100 Wien

T. +43(0)1 489 3961-0

F. +43(0)1 489 3961-7

[mail@szabo-scandic.com](mailto:mail@szabo-scandic.com)

[www.szabo-scandic.com](http://www.szabo-scandic.com)

[linkedin.com/company/szaboscandic](https://www.linkedin.com/company/szaboscandic)

## SARS-CoV-2 (COVID-19) Spike overexpression 293T whole cell lysate

**Cat No. GTX535664**

<b>Application</b>	WB, ELISA
<b>Reactivity</b>	SARS Coronavirus 2
<b>Species</b>	SARS Coronavirus 2

**Package**  
200 µg

## PRODUCT

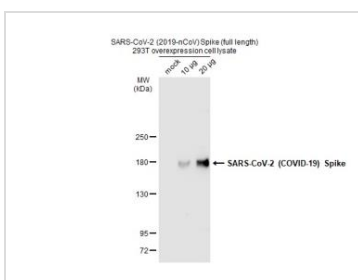
## Summary

Whole-cell lysate of 293T cells overexpressing SARS-CoV-2 spike protein (full-length, no tag). The translated amino acid sequence is based on QHD43416.1. Lysate prepared in RIPA buffer with no reducing agents and is unboiled. Please see matched control 293T lysate ([GTX535673](#))

## PROPERTIES

<b>Form</b>	Liquid
<b>Buffer</b>	50 mM Tris-HCl (pH 8.0), 150 mM NaCl, 0.5% sodium deoxycholate, 1% Triton X-100, 0.25% SDS, 1 mM PMSF, 5 µg/ml Leupeptin, 2 µg/ml Aprotinin, 1 µg/ml Pepstatin A, 0.025% ProClin 300
<b>Storage</b>	Store as concentrated solution. Centrifuge briefly prior to opening vial. Aliquot and store at -20°C or below. Avoid multiple freeze-thaw cycles.
<b>Concentration</b>	1 mg/ml
<b>Conjugation</b>	Unconjugated
<b>Note</b>	For laboratory use only. Not for any clinical, therapeutic, or diagnostic use in humans or animals. Not for animal or human consumption.

## DATA IMAGES

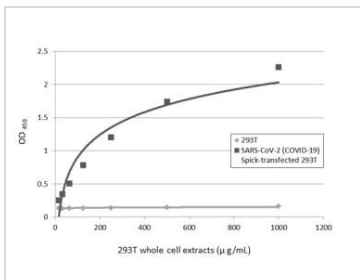


## GTX535664 WB Image

Non-transfected and transfected 293T whole cell extracts were separated by 5% SDS-PAGE, and the membrane was blotted with SARS-CoV-2 (COVID-19) Spike antibody (GTX135356) diluted at 1:5000. The HRP-conjugated anti-rabbit IgG antibody (GTX213110-01) was used to detect the primary antibody.

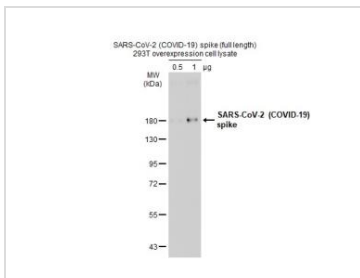


For full product information, images and publications, please visit our [website](#).



**GTX535664 ELISA Image**

Sandwich ELISA detection of non-transfected (GTX535673) and SARS-CoV-2 spike (full length) transfected (GTX535664) 293T whole cell extracts using SARS-CoV-2 (COVID-19) Spike S1 antibody [GT263] (GTX635708) as capture antibody at concentration of 5 µg/mL and SARS-CoV-2 (COVID-19) Spike S1 antibody [HL263] (GTX635672) as detection antibody at concentration of 1 µg/mL. Rabbit IgG antibody (HRP) (GTX213110-01) was diluted at 1:10000 and used to detect the primary antibody.



**GTX535664 WB Image**

SARS-CoV-2 (COVID-19) spike 293T overexpression cell lysates (GTX535664) were separated by 7.5% SDS-PAGE, and the membrane was blotted with SARS-CoV / SARS-CoV-2 (COVID-19) spike antibody [1A9] (GTX632604) diluted at 1:1000. The HRP-conjugated anti-mouse IgG antibody (GTX213111-01) was used to detect the primary antibody, and the signal was developed with Trident ECL plus-Enhanced.



For full product information, images and publications, please visit our [website](#).