



# SZABO SCANDIC

Part of Europa Biosite

## Produktinformation



Forschungsprodukte & Biochemikalien



Zellkultur & Verbrauchsmaterial



Diagnostik & molekulare Diagnostik



Laborgeräte & Service

Weitere Information auf den folgenden Seiten!  
See the following pages for more information!



### Lieferung & Zahlungsart

siehe unsere [Liefer- und Versandbedingungen](#)

### Zuschläge

- Mindermengenzuschlag
- Trockeneiszuschlag
- Gefahrgutzuschlag
- Expressversand

### SZABO-SCANDIC HandelsgmbH

Quellenstraße 110, A-1100 Wien

T. +43(0)1 489 3961-0

F. +43(0)1 489 3961-7

[mail@szabo-scandic.com](mailto:mail@szabo-scandic.com)

[www.szabo-scandic.com](http://www.szabo-scandic.com)

[linkedin.com/company/szaboscandic](https://www.linkedin.com/company/szaboscandic) 

## SARS-CoV-2 (COVID-19) Spike RBD Protein Sandwich ELISA Kit

Cat. No. GTX536267

Application ELISA, Sandwich ELISA

Reactivity SARS Coronavirus 2

Reference ( 1 )

Package

96 test

## PRODUCT

## Summary

The GeneTex SARS-CoV-2 (COVID-19) Spike RBD Protein Sandwich ELISA kit is an in vitro tool that quantitatively detects the SARS-CoV-2 Spike receptor-binding domains (RBDs) of the "wildtype" SARS-CoV-2 strain as well as those of the Alpha, Beta, Gamma, Delta, Alpha (E484K), and Kappa variants. This assay employs a pair of monoclonal antibodies specific for the SARS-CoV-2 RBD, with the lowest detectable dose concentration of standard RBD protein being 1.8 pg/ml (Alpha variant).

## APPLICATION

## Application Note

The suitable sample types include cell culture supernatant, plasma and serum. The suggested sample loading amount is 50µl per well. Please see the protocol for detailed procedure. Assay range : Please refer to the protocol.

## Product Note

This ELISA kit detects Spike RBD proteins derived from multiple SARS-CoV-2 VOCs, including Omicron variant (BA.1 and BA.2).

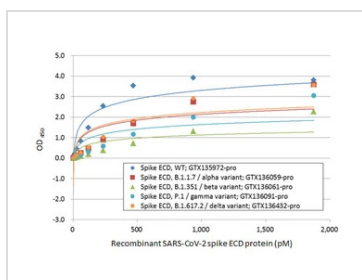
## PROPERTIES

**Storage** The entire kit can be stored at 2-8°C for up to 6 months.

**Conjugation** Horseradish peroxidase(HRP)

**Note** For *In vitro* laboratory use only. Not for any clinical, therapeutic, or diagnostic use in humans or animals. Not for animal or human consumption.

## DATA IMAGES

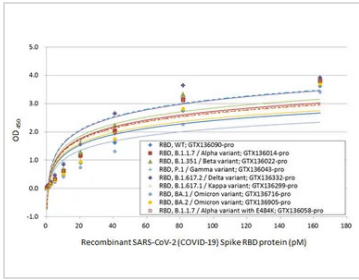


## GTX536267 ELISA Image

Sandwich ELISA detection of recombinant Spike ECD proteins derived from different strains of SARS-CoV-2 virus (ie., wild type; B.1.1.7 alpha variant; B.1.351 beta variant; P.1 gamma variant; B1.617.2 delta variant) using SARS-CoV-2 (COVID-19) Spike RBD Protein Sandwich ELISA Kit (GTX536267).

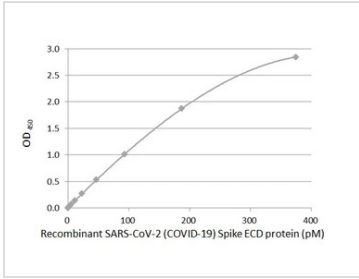


For full product information, images and publications, please visit our [website](#).



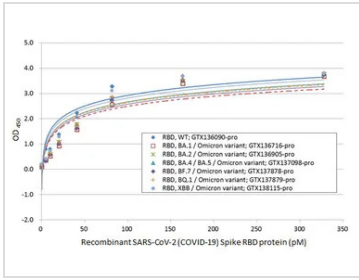
**GTX536267 ELISA Image**

Sandwich ELISA detection of recombinant Spike RBD proteins derived from different strains of SARS-CoV-2 (ie., wild type; B.1.1.7 Alpha variant; B.1.351 Beta variant; P.1 Gamma variant; B1.617.2 Delta variant, B.1.617.1 Kappa variant; BA.1 Omicron variant; BA.2 Omicron variant; B.1.1.7 Alpha variant with E484K) using SARS-CoV-2 (COVID-19) Spike RBD Protein Sandwich ELISA Kit (GTX536267).



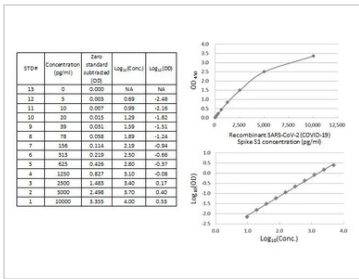
**GTX536267 ELISA Image**

Sandwich ELISA detection of recombinant Spike ECD protein (GTX135972-pro) derived from wild-type strain of SARS-CoV-2 using SARS-CoV-2 (COVID-19) Spike RBD Protein Sandwich ELISA Kit (GTX536267).



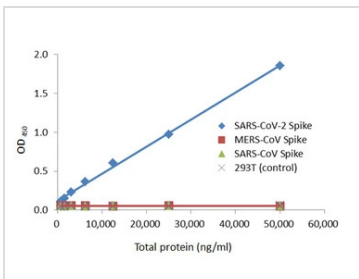
**GTX536267 ELISA Image**

Sandwich ELISA detection of recombinant Spike RBD proteins derived from different strains of SARS-CoV-2 (ie., wild type; BA.1 Omicron variant; BA.2 Omicron variant; BA.4 / BA.5 Omicron variant; BF.7 Omicron variant; BQ.1 Omicron variant; XBB Omicron variant) using SARS-CoV-2 (COVID-19) Spike RBD Protein Sandwich ELISA Kit (GTX536267).



**GTX536267 ELISA Image**

ELISA analysis of SARS-CoV-2 (COVID-19) Spike protein S1 subunit using SARS-CoV-2 (COVID-19) Spike RBD Protein Sandwich ELISA Kit (GTX536267).



**GTX536267 ELISA Image**

ELISA assay using lysates of 293T cells overexpressing the spike proteins from SARS-CoV-2, SARS-CoV, or MERS-CoV. The SARS-CoV-2 (COVID-19) Spike RBD Protein Sandwich ELISA Kit (GTX536267) specifically detects only SARS-CoV-2 spike protein.



For full product information, images and publications, please visit our [website](#).