



SZABO SCANDIC

Part of Europa Biosite

Produktinformation



Forschungsprodukte & Biochemikalien



Zellkultur & Verbrauchsmaterial



Diagnostik & molekulare Diagnostik



Laborgeräte & Service

Weitere Information auf den folgenden Seiten!
See the following pages for more information!



Lieferung & Zahlungsart

siehe unsere [Liefer- und Versandbedingungen](#)

Zuschläge

- Mindermengenzuschlag
- Trockeneiszuschlag
- Gefahrgutzuschlag
- Expressversand

SZABO-SCANDIC HandelsgmbH

Quellenstraße 110, A-1100 Wien

T. +43(0)1 489 3961-0

F. +43(0)1 489 3961-7

mail@szabo-scandic.com

www.szabo-scandic.com

[linkedin.com/company/szaboscandic](https://www.linkedin.com/company/szaboscandic) 

SARS-CoV-2 Membrane Protein Proximity Ligation Assay (PLA) Kit (Cy3)

Cat. No. GTX537371-23

Application	PLA
Reactivity	SARS Coronavirus 2

Package
5 test

PRODUCT

	Item	Name	Quantity	Storage
Content	A1	Blocking Solution, 10 mL	2 bottles	-20 °C
	A2	Antibody (Ab)-Oligo A, 40 µL	1 tube	-20 °C
	A3	Antibody (Ab)-Oligo B, 40 µL	1 tube	-20 °C
	A4	Ligase (400 U/µL), 10 µL	1 tube	-20 °C
	A5	5x Ligation Solution, 500 µL	1 tube	-20 °C
	A6	Polymerase (10 U/µL), 10 µL	1 tube	-20 °C
	A7	5x Amplification Solution, 500 µL	1 tube	-20 °C
	A8	Detection Probe (Cy3), 50 µL	1 tube	-20 °C
	B1	10x Probe Solution, 200 µL	1 tube	4°C or below
	B2	20x Wash Buffer, 50 mL	2 bottles	4°C or below

Summary

The SARS-CoV-2 Membrane Protein Proximity Ligation Assay (PLA) Kit (Cy3) enables the detection of SARS-CoV-2 membrane protein in virus-infected tissue or infected/transfected cell block samples. The viral membrane protein is detected using two oligonucleotide-conjugated primary antibodies, called PLA probes. Only when both PLA probes bind to the membrane protein can the assay generate an amplified signal. This provides researchers with a highly specific and sensitive diagnostic tool.

APPLICATION

Application Note

Please see the protocol for detailed procedure.

Product Note This PLA kit detects SARS-CoV-2 membrane protein.

PROPERTIES

Form	Liquid
Storage	Individual components are stored at -20°C or 4°C as indicated.



For full product information, images and publications, please visit our [website](#).

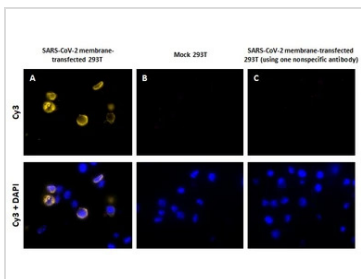
Conjugation Cyanine3 (Cy3)

For laboratory research use only. Not for any clinical, therapeutic, or diagnostic use in humans or animals. Not for animal or human consumption.

Note

Purchasers shall not, and agree not to enable third parties to, analyze, copy, reverse engineer or otherwise attempt to determine the structure or sequence of the product.

DATA IMAGES



GTX537371-23 PLA Image

Detection of SARS-CoV-2 (COVID-19) membrane protein in a transfected HEK293T cell FFPE Cell Pellet Block (GTX435640) section using the SARS-CoV-2 Membrane Protein Proximity Ligation Assay Kit (Cy3) (GTX537371-23). PLA signals appear yellow and nuclei are blue.

- A) Positive PLA reaction in transfected HEK293T cells.
- B) Negative control with mock-transfected HEK293T cells.
- C) Negative control using one non-specific PLA antibody probe in transfected HEK293T cells.



GTX537371-23 Image



For full product information, images and publications, please visit our [website](#).