



# SZABO SCANDIC

Part of Europa Biosite

## Produktinformation



Forschungsprodukte & Biochemikalien



Zellkultur & Verbrauchsmaterial



Diagnostik & molekulare Diagnostik



Laborgeräte & Service

Weitere Information auf den folgenden Seiten!  
See the following pages for more information!



### Lieferung & Zahlungsart

siehe unsere [Liefer- und Versandbedingungen](#)

### Zuschläge

- Mindermengenzuschlag
- Trockeneiszuschlag
- Gefahrgutzuschlag
- Expressversand

### SZABO-SCANDIC HandelsgmbH

Quellenstraße 110, A-1100 Wien

T. +43(0)1 489 3961-0

F. +43(0)1 489 3961-7

[mail@szabo-scandic.com](mailto:mail@szabo-scandic.com)

[www.szabo-scandic.com](http://www.szabo-scandic.com)

[linkedin.com/company/szaboscandic](https://www.linkedin.com/company/szaboscandic) 

## CBX4 antibody

Cat. No. GTX53928

|                    |               |
|--------------------|---------------|
| <b>Host</b>        | Rabbit        |
| <b>Clonality</b>   | Polyclonal    |
| <b>Isotype</b>     | IgG           |
| <b>Application</b> | WB, IHC-P, IP |
| <b>Reactivity</b>  | Human, Mouse  |

Package  
100 µl

## APPLICATION

## Application Note

\*Optimal dilutions/concentrations should be determined by the researcher.

| Suggested dilution | Recommended dilution |
|--------------------|----------------------|
| WB                 | 1:500 - 1:2000       |
| IHC-P              | 1:50 - 1:200         |
| IP                 | 1:50 - 1:200         |

Not tested in other applications.

**Calculated MW** 61 kDa. ([Note](#))

## PROPERTIES

|                      |  |
|----------------------|--|
| <b>Form</b>          | Liquid   |
| <b>Buffer</b>        | PBS, 50% Glycerol  |
| <b>Preservative</b>  | 0.02% Sodium azide   |
| <b>Storage</b>       | Store as concentrated solution. Centrifuge briefly prior to opening vial. For short-term storage (1-2 weeks), store at 4°C. For long-term storage, aliquot and store at -20°C or below. Avoid multiple freeze-thaw cycles. |
| <b>Concentration</b> | Batch dependent (Please refer to the vial label for the specific concentration.)   |
| <b>Immunogen</b>     | Recombinant fusion protein containing a sequence corresponding to amino acids 401-560 of human CBX4 (NP_003646.2).   |
| <b>Purification</b>  | Purified by affinity chromatography  |
| <b>Conjugation</b>   | Unconjugated   |

## Note

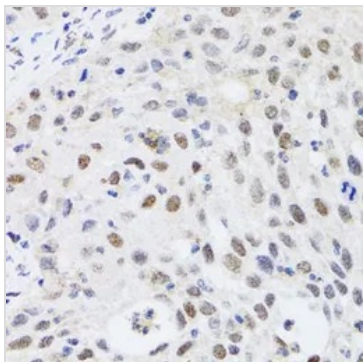
For laboratory research use only. Not for any clinical, therapeutic, or diagnostic use in humans or animals. Not for animal or human consumption.

Purchasers shall not, and agree not to enable third parties to, analyze, copy, reverse engineer or otherwise attempt to determine the structure or sequence of the product.



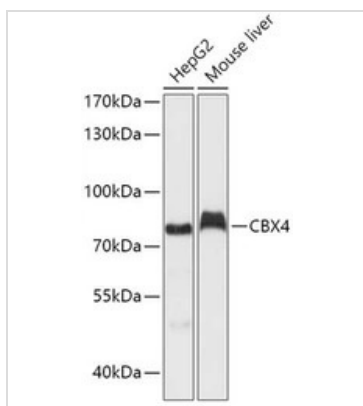
For full product information, images and publications, please visit our [website](#).

## DATA IMAGES

**GTX53928 IHC-P Image**

IHC-P analysis of human lung cancer tissue using GTX53928 CBX4 antibody.

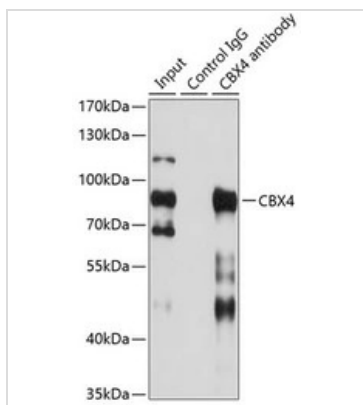
Dilution : 1:100

**GTX53928 WB Image**

WB analysis of various sample lysates using GTX53928 CBX4 antibody.

Dilution : 1:1000

Loading : 25µg per lane

**GTX53928 IP Image**

IP analysis of HepG2 cell lysate using GTX53928 CBX4 antibody.

Antibody amount : 1µg / 200µg lysate

Dilution : 1:500



For full product information, images and publications, please visit our [website](https://www.genetex.com).