



# SZABO SCANDIC

Part of Europa Biosite

## Produktinformation



Forschungsprodukte & Biochemikalien



Zellkultur & Verbrauchsmaterial



Diagnostik & molekulare Diagnostik



Laborgeräte & Service

Weitere Information auf den folgenden Seiten!  
See the following pages for more information!



### Lieferung & Zahlungsart

siehe unsere [Liefer- und Versandbedingungen](#)

### Zuschläge

- Mindermengenzuschlag
- Trockeneiszuschlag
- Gefahrgutzuschlag
- Expressversand

### SZABO-SCANDIC HandelsgmbH

Quellenstraße 110, A-1100 Wien

T. +43(0)1 489 3961-0

F. +43(0)1 489 3961-7

[mail@szabo-scandic.com](mailto:mail@szabo-scandic.com)

[www.szabo-scandic.com](http://www.szabo-scandic.com)

[linkedin.com/company/szaboscandic](https://www.linkedin.com/company/szaboscandic) 

## AK3 antibody [SJB3-36]

**Cat No. GTX57541**

<b>Host</b>	Mouse
<b>Clonality</b>	Monoclonal
<b>Isotype</b>	IgG1
<b>Application</b>	WB, ICC/IF, IHC-P, FACS
<b>Reactivity</b>	Human, Mouse

**Package**  
100 µl

## APPLICATION

**Application Note**

\*Optimal dilutions/concentrations should be determined by the researcher.

Suggested dilution	Dilution
WB	1:500-1:2000
ICC/IF	Assay dependent
IHC-P	Assay dependent
FACS	Assay dependent

Not tested in other applications.

**Calculated MW** 26 kDa. ([Note](#))

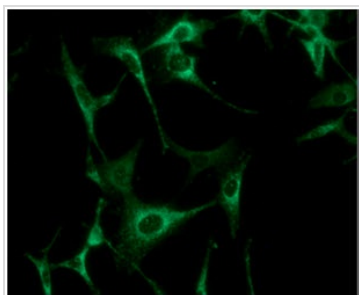
## PROPERTIES

<b>Form</b>	Liquid
<b>Buffer</b>	PBS (pH 7.4), 0.02% sodium azide, 10% glycerol
<b>Storage</b>	Store as concentrated solution. Centrifuge briefly prior to opening vial. For short-term storage (1-2 weeks), store at 4°C. For long-term storage, aliquot and store at -20°C or below. Avoid multiple freeze-thaw cycles.
<b>Concentration</b>	1 mg/ml (Please refer to the vial label for the specific concentration.)
<b>Immunogen</b>	The clone SJB3-36 is derived from hybridization of mouse SP2/O myeloma cells with spleen cells from BALB/c mice immunized with a recombinant human Ak5 protein.
<b>Purification</b>	Protein G Purified
<b>Conjugation</b>	Unconjugated
<b>Note</b>	For laboratory use only. Not for any clinical, therapeutic, or diagnostic use in humans or animals. Not for animal or human consumption.



For full product information, images and publications, please visit our [website](#).

## DATA IMAGES

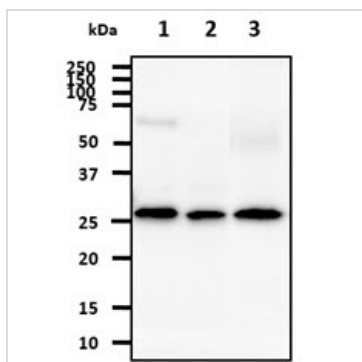
**GTX57541 ICC/IF Image**

ICC/IF analysis of U87-MG cells using GTX57541 AK3 antibody.

Blue: DAPI

Green: Primary antibody

Dilution: 1:100

**GTX57541 WB Image**

WB analysis of various samples using GTX57541 AK3 antibody.

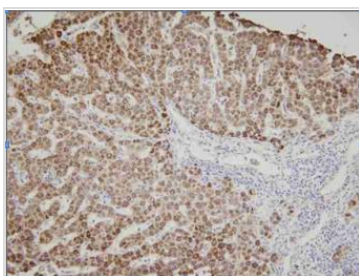
Lane 1 : Hep3B whole cell lysate

Lane 2 : 293T whole cell lysate

Lane 3 : Mouse kidney tissue lysate

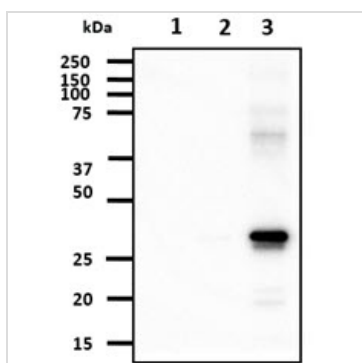
Loading : 40  $\mu$ g

Dilution : 1:1000

**GTX57541 IHC-P Image**

IHC-P analysis of Human liver tissue using GTX57541 AK3 antibody.

Dilution: 1:100

**GTX57541 WB Image**

WB analysis of various samples using GTX57541 AK3 antibody.

Lane 1 : Recombinant Human AK1 protein

Lane 2 : Recombinant Human AK2 protein

Lane 3 : Recombinant Human AK3 protein

Loading : 50 ng

Dilution : 1:1000



For full product information, images and publications, please visit our [website](#).