



SZABO SCANDIC

Part of Europa Biosite

Produktinformation



Forschungsprodukte & Biochemikalien



Zellkultur & Verbrauchsmaterial



Diagnostik & molekulare Diagnostik



Laborgeräte & Service

Weitere Information auf den folgenden Seiten!
See the following pages for more information!



Lieferung & Zahlungsart

siehe unsere [Liefer- und Versandbedingungen](#)

Zuschläge

- Mindermengenzuschlag
- Trockeneiszuschlag
- Gefahrgutzuschlag
- Expressversand

SZABO-SCANDIC HandelsgmbH

Quellenstraße 110, A-1100 Wien

T. +43(0)1 489 3961-0

F. +43(0)1 489 3961-7

mail@szabo-scandic.com

www.szabo-scandic.com

[linkedin.com/company/szaboscandic](https://www.linkedin.com/company/szaboscandic) 

GSK3 beta antibody [1F7]

Cat No. GTX57548

Host	Mouse
Clonality	Monoclonal
Isotype	IgG1
Application	WB, ICC/IF, FACS
Reactivity	Human

Package
100 µl

APPLICATION

Application Note

*Optimal dilutions/concentrations should be determined by the researcher.

Suggested dilution	Dilution
WB	1:1000-1:3000
ICC/IF	Assay dependent
FACS	Assay dependent

Not tested in other applications.

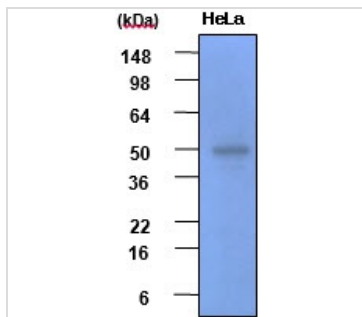
Calculated MW 47 kDa. ([Note](#))

PROPERTIES

Form	Liquid
Buffer	PBS (pH 7.4), 0.02% sodium azide, 10% glycerol
Storage	Store as concentrated solution. Centrifuge briefly prior to opening vial. For short-term storage (1-2 weeks), store at 4°C. For long-term storage, aliquot and store at -20°C or below. Avoid multiple freeze-thaw cycles.
Concentration	1 mg/ml (Please refer to the vial label for the specific concentration.)
Immunogen	The clone 1F7 is derived from hybridization of mouse SP2/O myeloma cells with spleen cells from BALB/c mice immunized with a recombinant human Gsk5beta protein.
Purification	Protein G Purified
Conjugation	Unconjugated
Note	For laboratory use only. Not for any clinical, therapeutic, or diagnostic use in humans or animals. Not for animal or human consumption.



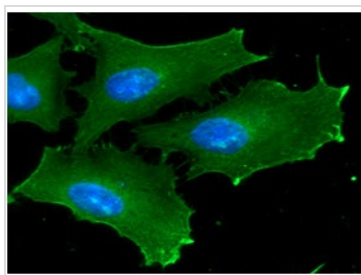
For full product information, images and publications, please visit our [website](#).

DATA IMAGES

GTX57548 WB Image

WB analysis of HeLa whole cell lysate using GTX57548 GSK3 beta antibody.

Loading : 30 µg

Dilution : 1:2000

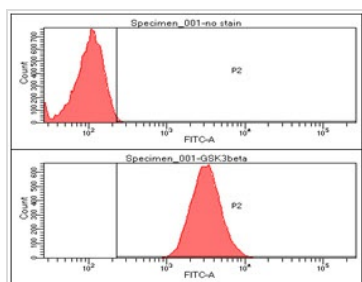

GTX57548 ICC/IF Image

ICC/IF analysis of HeLa cells using GTX57548 GSK3 beta antibody.

Blue: DAPI

Green: Primary antibody

Dilution: 1:100


GTX57548 FACS Image

FACS analysis of HeLa cells using GTX57548 GSK3 beta antibody.

Cell Number: 1 x 10⁶ cells

Upper panel : negative control, Lower panel: Primary antibody

Antibody amount: 2-5 µg



For full product information, images and publications, please visit our [website](#).