



# SZABO SCANDIC

Part of Europa Biosite

## Produktinformation



Forschungsprodukte & Biochemikalien



Zellkultur & Verbrauchsmaterial



Diagnostik & molekulare Diagnostik



Laborgeräte & Service

Weitere Information auf den folgenden Seiten!  
See the following pages for more information!



### Lieferung & Zahlungsart

siehe unsere [Liefer- und Versandbedingungen](#)

### Zuschläge

- Mindermengenzuschlag
- Trockeneiszuschlag
- Gefahrgutzuschlag
- Expressversand

### SZABO-SCANDIC HandelsgmbH

Quellenstraße 110, A-1100 Wien

T. +43(0)1 489 3961-0

F. +43(0)1 489 3961-7

[mail@szabo-scandic.com](mailto:mail@szabo-scandic.com)

[www.szabo-scandic.com](http://www.szabo-scandic.com)

[linkedin.com/company/szaboscandic](https://www.linkedin.com/company/szaboscandic) 

## HSP27 antibody [2A5]

**Cat No. GTX57550**

|                    |                         |
|--------------------|-------------------------|
| <b>Host</b>        | Mouse                   |
| <b>Clonality</b>   | Monoclonal              |
| <b>Isotype</b>     | IgG1                    |
| <b>Application</b> | WB, ICC/IF, IHC-P, FACS |
| <b>Reactivity</b>  | Human                   |

**Package**  
100 µl

## APPLICATION

**Application Note**

\*Optimal dilutions/concentrations should be determined by the researcher.

| Suggested dilution | Dilution        |
|--------------------|-----------------|
| WB                 | 1:1000-1:2000   |
| ICC/IF             | Assay dependent |
| IHC-P              | 1:50-1:100      |
| FACS               | Assay dependent |

Not tested in other applications.

**Calculated MW** 23 kDa. ([Note](#))

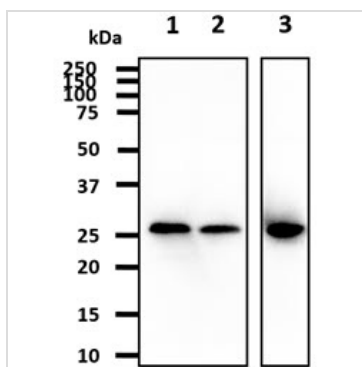
## PROPERTIES

|                      |  |
|----------------------|--|
| <b>Form</b>          | Liquid   |
| <b>Buffer</b>        | PBS (pH 7.4), 0.02% sodium azide, 10% glycerol   |
| <b>Storage</b>       | Store as concentrated solution. Centrifuge briefly prior to opening vial. For short-term storage (1-2 weeks), store at 4°C. For long-term storage, aliquot and store at -20°C or below. Avoid multiple freeze-thaw cycles. |
| <b>Concentration</b> | 1 mg/ml (Please refer to the vial label for the specific concentration.)   |
| <b>Immunogen</b>     | The clone 2A5 is derived from hybridization of mouse SP2/0 myeloma cells with spleen cells from BALB/c mice immunized with a recombinant human Hsp29 protein.  |
| <b>Purification</b>  | Protein G Purified   |
| <b>Conjugation</b>   | Unconjugated   |
| <b>Note</b>          | For laboratory use only. Not for any clinical, therapeutic, or diagnostic use in humans or animals. Not for animal or human consumption.   |



For full product information, images and publications, please visit our [website](#).

DATA IMAGES



**GTX57550 WB Image**

WB analysis of various samples using GTX57550 HSP27 antibody.

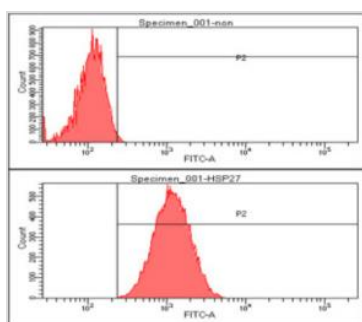
Lane 1 : HeLa whole cell lysate

Lane 2 : K562 whole cell lysate

Lane 3 : MCF-7 whole cell lysate

Loading : 40 µg

Dilution : 1:1000



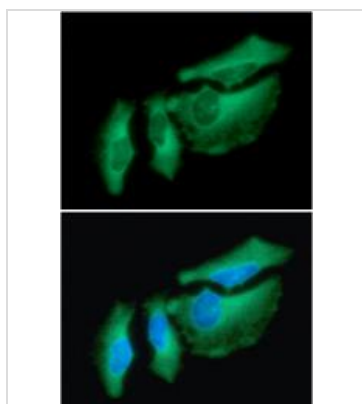
**GTX57550 FACS Image**

FACS analysis of A549 cells using GTX57550 HSP27 antibody.

Cell Number: 1 x 10<sup>6</sup> cells

Upper panel : negative control, Lower panel: Primary antibody

Antibody amount: 2-5 µg



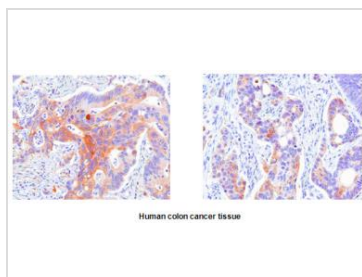
**GTX57550 ICC/IF Image**

ICC/IF analysis of HeLa cells using GTX57550 HSP27 antibody.

Blue: DAPI

Green: Primary antibody

Dilution: 1:100



**GTX57550 IHC-P Image**

IHC-P analysis of human colon cancer using GTX57550 HSP27 antibody.

Antigen retrieval: 0.1M sodium citrate buffer

Dilution: 1:50



For full product information, images and publications, please visit our [website](#).