



SZABO SCANDIC

Part of Europa Biosite

Produktinformation



Forschungsprodukte & Biochemikalien



Zellkultur & Verbrauchsmaterial



Diagnostik & molekulare Diagnostik



Laborgeräte & Service

Weitere Information auf den folgenden Seiten!
See the following pages for more information!



Lieferung & Zahlungsart

siehe unsere [Liefer- und Versandbedingungen](#)

Zuschläge

- Mindermengenzuschlag
- Trockeneiszuschlag
- Gefahrgutzuschlag
- Expressversand

SZABO-SCANDIC HandelsgmbH

Quellenstraße 110, A-1100 Wien

T. +43(0)1 489 3961-0

F. +43(0)1 489 3961-7

mail@szabo-scandic.com

www.szabo-scandic.com

[linkedin.com/company/szaboscandic](https://www.linkedin.com/company/szaboscandic) 

IRF5 antibody [10T1]

Cat No. GTX57552

Host	Mouse
Clonality	Monoclonal
Isotype	IgG1
Application	WB, ICC/IF, IHC-P, FACS
Reactivity	Human, Mouse

Package
100 µl

APPLICATION

Application Note

*Optimal dilutions/concentrations should be determined by the researcher.

Suggested dilution	Dilution
WB	1:500-1:1000
ICC/IF	Assay dependent
IHC-P	Assay dependent
FACS	Assay dependent

Not tested in other applications.

Calculated MW 56 kDa. ([Note](#))

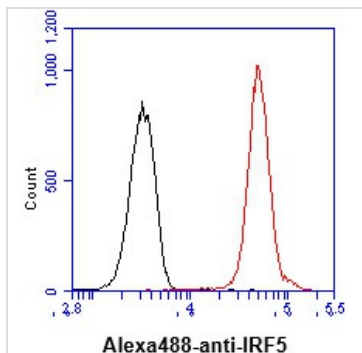
PROPERTIES

Form	Liquid
Buffer	PBS (pH 7.4), 0.02% sodium azide, 10% glycerol
Storage	Store as concentrated solution. Centrifuge briefly prior to opening vial. For short-term storage (1-2 weeks), store at 4°C. For long-term storage, aliquot and store at -20°C or below. Avoid multiple freeze-thaw cycles.
Concentration	1 mg/ml (Please refer to the vial label for the specific concentration.)
Immunogen	The clone 10T1 is derived from hybridization of mouse SP2/0 myeloma cells with spleen cells from BALB/c mice immunized with a recombinant human IRF-7 protein.
Purification	Protein G Purified
Conjugation	Unconjugated
Note	For laboratory use only. Not for any clinical, therapeutic, or diagnostic use in humans or animals. Not for animal or human consumption.



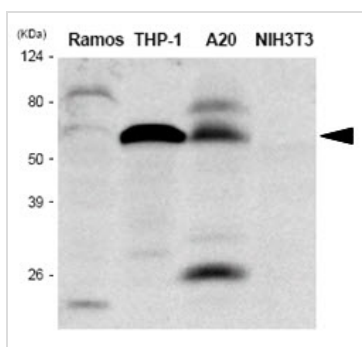
For full product information, images and publications, please visit our [website](#).

DATA IMAGES



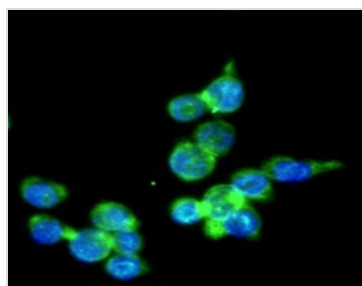
GTX57552 FACS Image

FACS analysis of THP-1 cells using GTX57552 IRF5 antibody.
 Cell Number: 1×10^6 cells
 Primary antibody: Red line
 Antibody amount: 2-5 μ g



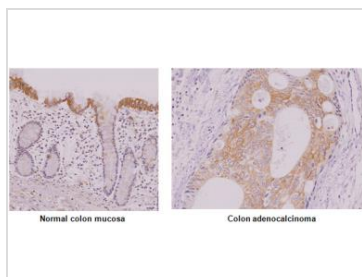
GTX57552 WB Image

WB analysis of various samples using GTX57552 IRF5 antibody.
 Samples : Ramos, THP-1, A20 and NIH-3T3 whole cell lysate
 Dilution : 1:1000



GTX57552 ICC/IF Image

ICC/IF analysis of THP-1 cells using GTX57552 IRF5 antibody.
 Blue: DAPI
 Green: Primary antibody
 Dilution: 1:100



GTX57552 IHC-P Image

IHC-P analysis of Human normal colon mucosa and colon adenocarcinoma using GTX57552 IRF5 antibody.
 Antigen retrieval: 0.1M sodium citrate buffer
 Dilution: 1:50



For full product information, images and publications, please visit our [website](#).