



SZABO SCANDIC

Part of Europa Biosite

Produktinformation



Forschungsprodukte & Biochemikalien



Zellkultur & Verbrauchsmaterial



Diagnostik & molekulare Diagnostik



Laborgeräte & Service

Weitere Information auf den folgenden Seiten!
See the following pages for more information!



Lieferung & Zahlungsart

siehe unsere [Liefer- und Versandbedingungen](#)

Zuschläge

- Mindermengenzuschlag
- Trockeneiszuschlag
- Gefahrgutzuschlag
- Expressversand

SZABO-SCANDIC HandelsgmbH

Quellenstraße 110, A-1100 Wien

T. +43(0)1 489 3961-0

F. +43(0)1 489 3961-7

mail@szabo-scandic.com

www.szabo-scandic.com

[linkedin.com/company/szaboscandic](https://www.linkedin.com/company/szaboscandic) 

PSMA antibody [k1H8]

Cat No. GTX57558

Host	Mouse
Clonality	Monoclonal
Isotype	IgG1
Application	WB, ICC/IF, FACS
Reactivity	Human

Package
100 µl

APPLICATION

Application Note

*Optimal dilutions/concentrations should be determined by the researcher.

Suggested dilution	Dilution
WB	1:1000-1:2000
ICC/IF	Assay dependent
FACS	Assay dependent

Not tested in other applications.

Calculated MW	84 kDa. (Note)
Observed MW	100 kDa. The observed M.W. is based on the following publication. PMID: 26576996

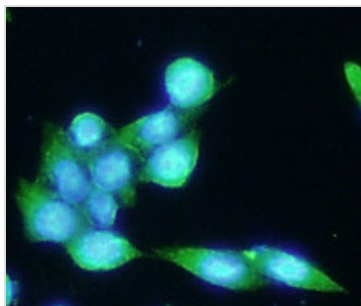
PROPERTIES

Form	Liquid
Buffer	PBS (pH 7.4), 0.02% sodium azide, 10% glycerol
Storage	Store as concentrated solution. Centrifuge briefly prior to opening vial. For short-term storage (1-2 weeks), store at 4°C. For long-term storage, aliquot and store at -20°C or below. Avoid multiple freeze-thaw cycles.
Concentration	1 mg/ml (Please refer to the vial label for the specific concentration.)
Immunogen	The clone k1H9 is derived from hybridization of mouse FO myeloma cells with spleen cells from BALB/c mice immunized with a recombinant human PSMA protein.
Purification	Protein G Purified
Conjugation	Unconjugated
Note	For laboratory use only. Not for any clinical, therapeutic, or diagnostic use in humans or animals. Not for animal or human consumption.



For full product information, images and publications, please visit our [website](#).

DATA IMAGES

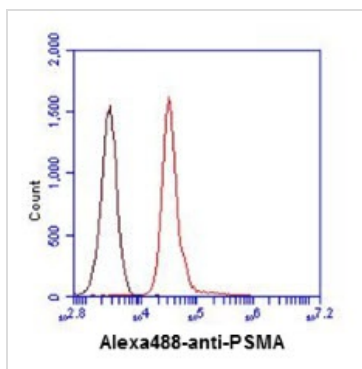
**GTX57558 ICC/IF Image**

ICC/IF analysis of LNCaP cells using GTX57558 PSMA antibody.

Blue: DAPI

Green: Primary antibody

Dilution: 1:100

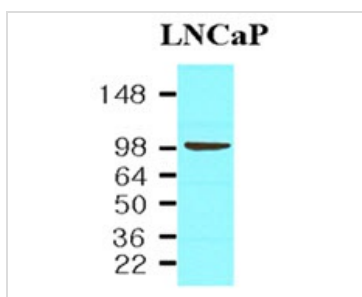
**GTX57558 FACS Image**

FACS analysis of LNCaP cells using GTX57558 PSMA antibody.

Cell Number: 1×10^6 cells

Primary antibody: Red line

Antibody amount: 2-5 μ g

**GTX57558 WB Image**

WB analysis of LNCaP whole cell lysate using GTX57558 PSMA antibody.

Loading : 30 μ g

Dilution : 1:1000



For full product information, images and publications, please visit our [website](#).