



# SZABO SCANDIC

Part of Europa Biosite

## Produktinformation



Forschungsprodukte & Biochemikalien



Zellkultur & Verbrauchsmaterial



Diagnostik & molekulare Diagnostik



Laborgeräte & Service

Weitere Information auf den folgenden Seiten!  
See the following pages for more information!



### Lieferung & Zahlungsart

siehe unsere [Liefer- und Versandbedingungen](#)

### Zuschläge

- Mindermengenzuschlag
- Trockeneiszuschlag
- Gefahrgutzuschlag
- Expressversand

### SZABO-SCANDIC HandelsgmbH

Quellenstraße 110, A-1100 Wien

T. +43(0)1 489 3961-0

F. +43(0)1 489 3961-7

[mail@szabo-scandic.com](mailto:mail@szabo-scandic.com)

[www.szabo-scandic.com](http://www.szabo-scandic.com)

[linkedin.com/company/szaboscandic](https://www.linkedin.com/company/szaboscandic) 

## TDP43 antibody [k1B9]

**Cat No. GTX57560**

<b>Host</b>	Mouse
<b>Clonality</b>	Monoclonal
<b>Isotype</b>	IgG1
<b>Application</b>	WB, IHC-P, FACS
<b>Reactivity</b>	Human

**Package**  
100 µl

## APPLICATION

**Application Note**

\*Optimal dilutions/concentrations should be determined by the researcher.

Suggested dilution	Dilution
WB	1:1000-1:2000
IHC-P	1:50-1:100
FACS	Assay dependent

Not tested in other applications.

**Calculated MW** 45 kDa. ([Note](#))

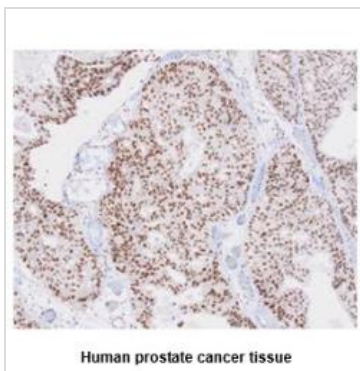
## PROPERTIES

<b>Form</b>	Liquid
<b>Buffer</b>	PBS (pH 7.4), 0.02% sodium azide, 10% glycerol
<b>Storage</b>	Store as concentrated solution. Centrifuge briefly prior to opening vial. For short-term storage (1-2 weeks), store at 4°C. For long-term storage, aliquot and store at -20°C or below. Avoid multiple freeze-thaw cycles.
<b>Concentration</b>	1 mg/ml (Please refer to the vial label for the specific concentration.)
<b>Immunogen</b>	The clone k1B10 is derived from hybridization of mouse FO myeloma cells with spleen cells from BALB/c mice immunized with a recombinant human TARDBP protein.
<b>Purification</b>	Protein G Purified
<b>Conjugation</b>	Unconjugated
<b>Note</b>	For laboratory use only. Not for any clinical, therapeutic, or diagnostic use in humans or animals. Not for animal or human consumption.



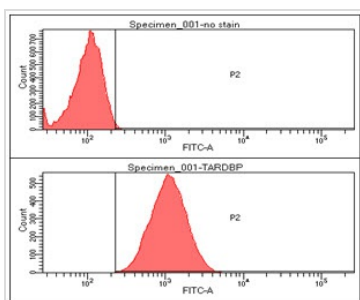
For full product information, images and publications, please visit our [website](#).

DATA IMAGES



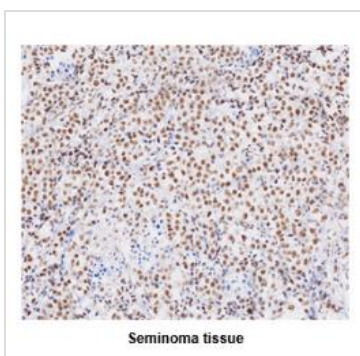
**GTX57560 IHC-P Image**

IHC-P analysis of human prostate cancer using GTX57560 TDP43 antibody.  
 Antigen retrieval: 0.1M sodium citrate buffer  
 Dilution: 1:50



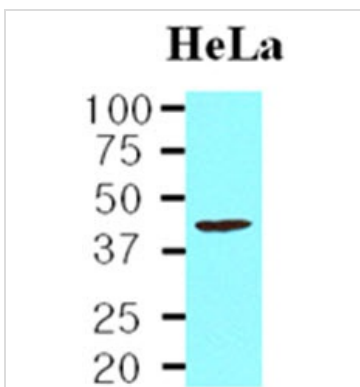
**GTX57560 FACS Image**

FACS analysis of HeLa cells using GTX57560 TDP43 antibody.  
 Cell Number:  $1 \times 10^6$  cells  
 Upper panel : negative control, Lower panel: Primary antibody  
 Antibody amount: 2-5  $\mu$ g



**GTX57560 IHC-P Image**

IHC-P analysis of human seminoma tissue using GTX57560 TDP43 antibody.  
 Antigen retrieval: 0.1M sodium citrate buffer  
 Dilution: 1:50



**GTX57560 WB Image**

WB analysis of HeLa whole cell lysate using GTX57560 TDP43 antibody.  
 Loading : 20  $\mu$ g  
 Dilution : 1:1000



For full product information, images and publications, please visit our [website](#).