



# SZABO SCANDIC

Part of Europa Biosite

## Produktinformation



Forschungsprodukte & Biochemikalien



Zellkultur & Verbrauchsmaterial



Diagnostik & molekulare Diagnostik



Laborgeräte & Service

Weitere Information auf den folgenden Seiten!  
See the following pages for more information!



### Lieferung & Zahlungsart

siehe unsere [Liefer- und Versandbedingungen](#)

### Zuschläge

- Mindermengenzuschlag
- Trockeneiszuschlag
- Gefahrgutzuschlag
- Expressversand

### SZABO-SCANDIC HandelsgmbH

Quellenstraße 110, A-1100 Wien

T. +43(0)1 489 3961-0

F. +43(0)1 489 3961-7

[mail@szabo-scandic.com](mailto:mail@szabo-scandic.com)

[www.szabo-scandic.com](http://www.szabo-scandic.com)

[linkedin.com/company/szaboscandic](https://www.linkedin.com/company/szaboscandic) 

## IL6 antibody [AT1H6]

**Cat No. GTX57562**

<b>Host</b>	Mouse
<b>Clonality</b>	Monoclonal
<b>Isotype</b>	IgG2a
<b>Application</b>	WB, ICC/IF, FACS
<b>Reactivity</b>	Human, Mouse

**Package**  
100 µl

## APPLICATION

**Application Note**

\*Optimal dilutions/concentrations should be determined by the researcher.

Suggested dilution	Dilution
WB	Assay dependent
ICC/IF	Assay dependent
FACS	Assay dependent

Not tested in other applications.

**Calculated MW** 24 kDa. ([Note](#))

## PROPERTIES

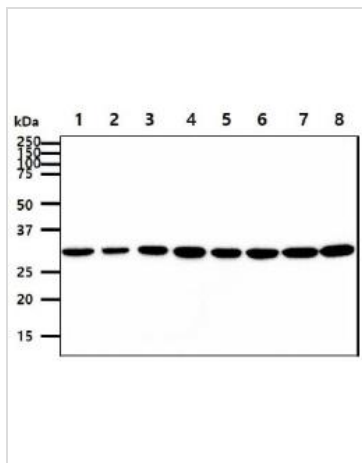
<b>Form</b>	Liquid
<b>Buffer</b>	PBS (pH 7.4), 0.02% sodium azide, 10% glycerol
<b>Storage</b>	Store as concentrated solution. Centrifuge briefly prior to opening vial. For short-term storage (1-2 weeks), store at 4°C. For long-term storage, aliquot and store at -20°C or below. Avoid multiple freeze-thaw cycles.
<b>Concentration</b>	1 mg/ml (Please refer to the vial label for the specific concentration.)
<b>Immunogen</b>	The clone AT1H6 is derived from hybridization of mouse F0 myeloma cells with spleen cells from BALB/c mice immunized with a recombinant human IL-8 protein.
<b>Purification</b>	Protein G Purified
<b>Conjugation</b>	Unconjugated
<b>Note</b>	For laboratory use only. Not for any clinical, therapeutic, or diagnostic use in humans or animals. Not for animal or human consumption.



For full product information, images and publications, please visit our [website](#).

Date 2020 / 07 / 27 Page 1 of 2

DATA IMAGES

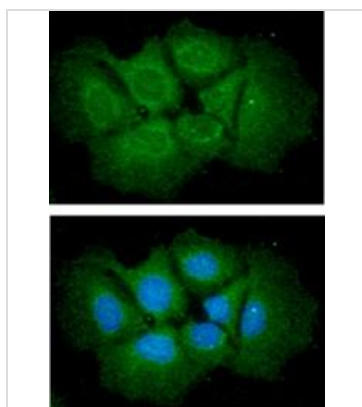


**GTX57562 WB Image**

WB analysis of various samples using GTX57562 IL6 antibody.

- Lane 1 : HeLa whole cell lysate
- Lane 2 : HepG2 whole cell lysate
- Lane 3 : Raw264.7 whole cell lysate
- Lane 4 : PC-3 whole cell lysate
- Lane 5 : THP-1 whole cell lysate
- Lane 6 : A549 whole cell lysate
- Lane 7 : MCF-7 whole cell lysate
- Lane 8 : K562 whole cell lysate

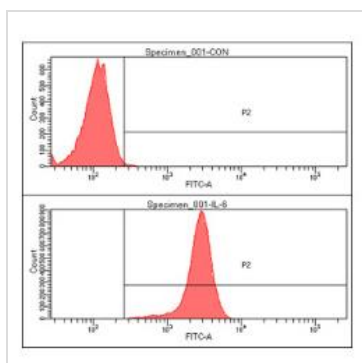
Loading : 40 µg  
Dilution : 1:1000



**GTX57562 ICC/IF Image**

ICC/IF analysis of Hep3B cells using GTX57562 IL6 antibody.

- Blue: DAPI
  - Green: Primary antibody
- Dilution: 1:100



**GTX57562 FACS Image**

FACS analysis of LNCaP cells using GTX57562 IL6 antibody.

- Cell Number: 1 x 10<sup>6</sup> cells
  - Red: Primary antibody
- Antibody amount: 2-5 µg



For full product information, images and publications, please visit our [website](#).