



SZABO SCANDIC

Part of Europa Biosite

Produktinformation



Forschungsprodukte & Biochemikalien



Zellkultur & Verbrauchsmaterial



Diagnostik & molekulare Diagnostik



Laborgeräte & Service

Weitere Information auf den folgenden Seiten!
See the following pages for more information!



Lieferung & Zahlungsart

siehe unsere [Liefer- und Versandbedingungen](#)

Zuschläge

- Mindermengenzuschlag
- Trockeneiszuschlag
- Gefahrgutzuschlag
- Expressversand

SZABO-SCANDIC HandelsgmbH

Quellenstraße 110, A-1100 Wien

T. +43(0)1 489 3961-0

F. +43(0)1 489 3961-7

mail@szabo-scandic.com

www.szabo-scandic.com

[linkedin.com/company/szaboscandic](https://www.linkedin.com/company/szaboscandic) 

14-3-3 epsilon antibody [AT4F8]

Cat No. GTX57563

Host	Mouse
Clonality	Monoclonal
Isotype	IgG2b
Application	WB, ICC/IF
Reactivity	Human, Mouse

Package
100 µl

APPLICATION

Application Note

*Optimal dilutions/concentrations should be determined by the researcher.

Suggested dilution	Dilution
WB	Assay dependent
ICC/IF	Assay dependent

Not tested in other applications.

Calculated MW 29 kDa. ([Note](#))

Specificity/Sensitivity Based on internal testing result, this antibody does not cross react with human 14-3-3 zeta, human 14-3-3 beta, human 14-3-3 eta, human 14-3-3 gamma, human 14-3-3 sigma, and human 14-3-3 tau protein.

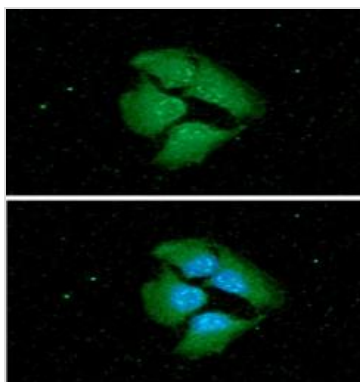
PROPERTIES

Form	Liquid
Buffer	PBS (pH 7.4), 0.02% sodium azide, 10% glycerol
Storage	Store as concentrated solution. Centrifuge briefly prior to opening vial. For short-term storage (1-2 weeks), store at 4°C. For long-term storage, aliquot and store at -20°C or below. Avoid multiple freeze-thaw cycles.
Concentration	1 mg/ml (Please refer to the vial label for the specific concentration.)
Immunogen	The clone AT4F8 is derived from hybridization of mouse F0 myeloma cells with spleen cells from BALB/c mice immunized with a recombinant human 14-3-5 epsilon protein.
Purification	Protein A Purified
Conjugation	Unconjugated
Note	For laboratory use only. Not for any clinical, therapeutic, or diagnostic use in humans or animals. Not for animal or human consumption.



For full product information, images and publications, please visit our [website](#).

DATA IMAGES



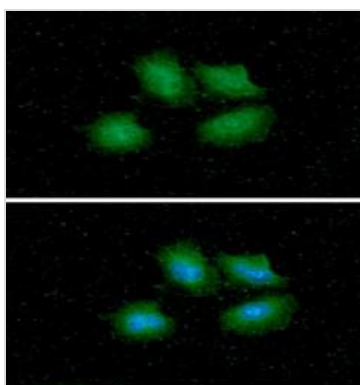
GTX57563 ICC/IF Image

ICC/IF analysis of HeLa cells using GTX57563 14-3-3 epsilon antibody.

Blue: DAPI

Green: Primary antibody

Dilution: 1:100



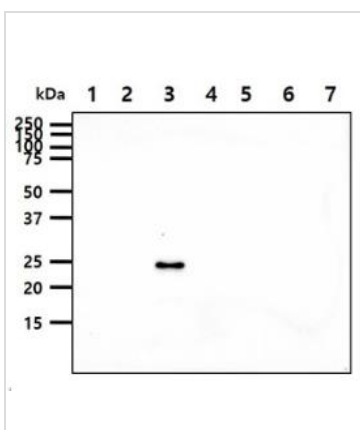
GTX57563 ICC/IF Image

ICC/IF analysis of A549 cells using GTX57563 14-3-3 epsilon antibody.

Blue: DAPI

Green: Primary antibody

Dilution: 1:100



GTX57563 WB Image

WB analysis of various samples using GTX57563 14-3-3 epsilon antibody.

Lane 1 : Recombinant Human 14-3-3 zeta protein

Lane 2 : Recombinant Human 14-3-3 beta protein

Lane 3 : Recombinant Human 14-3-3 epsilon protein

Lane 4 : Recombinant Human 14-3-3 eta protein

Lane 5 : Recombinant Human 14-3-3 gamma protein

Lane 6 : Recombinant Human 14-3-3 sigma protein

Lane 7 : Recombinant Human 14-3-3 tau protein

Loading : 50 ng

Dilution : 1:1000



For full product information, images and publications, please visit our [website](#).