



SZABO SCANDIC

Part of Europa Biosite

Produktinformation



Forschungsprodukte & Biochemikalien



Zellkultur & Verbrauchsmaterial



Diagnostik & molekulare Diagnostik



Laborgeräte & Service

Weitere Information auf den folgenden Seiten!
See the following pages for more information!



Lieferung & Zahlungsart

siehe unsere [Liefer- und Versandbedingungen](#)

Zuschläge

- Mindermengenzuschlag
- Trockeneiszuschlag
- Gefahrgutzuschlag
- Expressversand

SZABO-SCANDIC HandelsgmbH

Quellenstraße 110, A-1100 Wien

T. +43(0)1 489 3961-0

F. +43(0)1 489 3961-7

mail@szabo-scandic.com

www.szabo-scandic.com

[linkedin.com/company/szaboscandic](https://www.linkedin.com/company/szaboscandic) 

KLF4 antibody [AT4E6]

Cat No. GTX57568

Host	Mouse
Clonality	Monoclonal
Isotype	IgG1
Application	WB, FACS
Reactivity	Human

Package
100 µl

APPLICATION

Application Note

*Optimal dilutions/concentrations should be determined by the researcher.

Suggested dilution	Dilution
WB	1:1000-1:2000
FACS	Assay dependent

Not tested in other applications.

Calculated MW 55 kDa. ([Note](#))

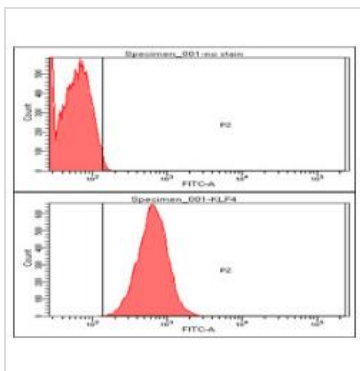
PROPERTIES

Form	Liquid
Buffer	PBS (pH 7.4), 0.02% sodium azide, 10% glycerol
Storage	Store as concentrated solution. Centrifuge briefly prior to opening vial. For short-term storage (1-2 weeks), store at 4°C. For long-term storage, aliquot and store at -20°C or below. Avoid multiple freeze-thaw cycles.
Concentration	1 mg/ml (Please refer to the vial label for the specific concentration.)
Immunogen	The clone AT4E6 is derived from hybridization of mouse F0 myeloma cells with spleen cells from BALB/c mice immunized with a recombinant human kLF6 protein.
Purification	Protein G Purified
Conjugation	Unconjugated
Note	For laboratory use only. Not for any clinical, therapeutic, or diagnostic use in humans or animals. Not for animal or human consumption.



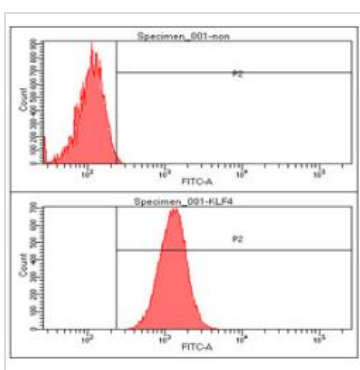
For full product information, images and publications, please visit our [website](#).

DATA IMAGES



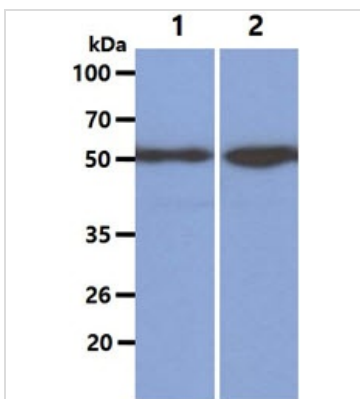
GTX57568 FACS Image

FACS analysis of HeLa cells using GTX57568 KLF4 antibody.
 Cell Number: 1×10^6 cells
 Upper panel : negative control, Lower panel: Primary antibody
 Antibody amount: 2-5 μ g



GTX57568 FACS Image

FACS analysis of A549 cells using GTX57568 KLF4 antibody.
 Cell Number: 1×10^6 cells
 Primary antibody: Red line
 Antibody amount: 2-5 μ g



GTX57568 WB Image

WB analysis of various samples using GTX57568 KLF4 antibody.
 Lane 1 : A549 whole cell lysate
 Lane 2 : HeLa whole cell lysate
 Loading : 40 μ g
 Dilution : 1:3000



For full product information, images and publications, please visit our [website](#).