



# SZABO SCANDIC

Part of Europa Biosite

## Produktinformation



Forschungsprodukte & Biochemikalien



Zellkultur & Verbrauchsmaterial



Diagnostik & molekulare Diagnostik



Laborgeräte & Service

Weitere Information auf den folgenden Seiten!  
See the following pages for more information!



### Lieferung & Zahlungsart

siehe unsere [Liefer- und Versandbedingungen](#)

### Zuschläge

- Mindermengenzuschlag
- Trockeneiszuschlag
- Gefahrgutzuschlag
- Expressversand

### SZABO-SCANDIC HandelsgmbH

Quellenstraße 110, A-1100 Wien

T. +43(0)1 489 3961-0

F. +43(0)1 489 3961-7

[mail@szabo-scandic.com](mailto:mail@szabo-scandic.com)

[www.szabo-scandic.com](http://www.szabo-scandic.com)

[linkedin.com/company/szaboscandic](https://www.linkedin.com/company/szaboscandic) 

## HAX1 antibody [AT3C5]

Cat No. GTX57571

|                    |            |
|--------------------|------------|
| <b>Host</b>        | Mouse      |
| <b>Clonality</b>   | Monoclonal |
| <b>Isotype</b>     | IgG2b      |
| <b>Application</b> | WB, ICC/IF |
| <b>Reactivity</b>  | Human      |

Package  
100 µl

## APPLICATION

## Application Note

\*Optimal dilutions/concentrations should be determined by the researcher.

| Suggested dilution | Dilution        |
|--------------------|-----------------|
| WB                 | 1:1000-1:2000   |
| ICC/IF             | Assay dependent |

Not tested in other applications.

**Calculated MW** 32 kDa. ([Note](#))

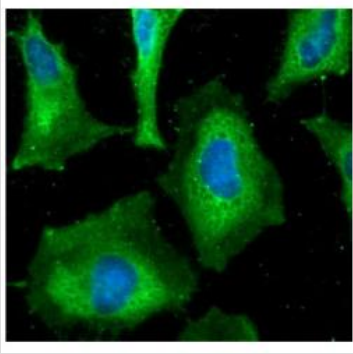
## PROPERTIES

|                      |  |
|----------------------|--|
| <b>Form</b>          | Liquid   |
| <b>Buffer</b>        | PBS (pH 7.4), 0.02% sodium azide, 10% glycerol   |
| <b>Storage</b>       | Store as concentrated solution. Centrifuge briefly prior to opening vial. For short-term storage (1-2 weeks), store at 4°C. For long-term storage, aliquot and store at -20°C or below. Avoid multiple freeze-thaw cycles. |
| <b>Concentration</b> | 1 mg/ml (Please refer to the vial label for the specific concentration.)   |
| <b>Immunogen</b>     | The clone AT3C5 is derived from hybridization of mouse F0 myeloma cells with spleen cells from BALB/c mice immunized with a recombinant human HAX3 protein.  |
| <b>Purification</b>  | Protein G Purified   |
| <b>Conjugation</b>   | Unconjugated   |
| <b>Note</b>          | For laboratory use only. Not for any clinical, therapeutic, or diagnostic use in humans or animals. Not for animal or human consumption.   |



For full product information, images and publications, please visit our [website](#).

## DATA IMAGES

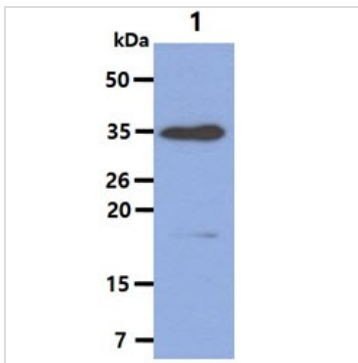
**GTX57571 ICC/IF Image**

ICC/IF analysis of HeLa cells using GTX57571 HAX1 antibody.

Blue: DAPI

Green: Primary antibody

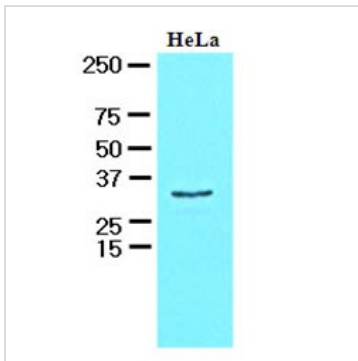
Dilution: 1:100

**GTX57571 WB Image**

WB analysis of Raji whole cell lysate using GTX57571 HAX1 antibody.

Loading : 40  $\mu$ g

Dilution : 1:1000

**GTX57571 WB Image**

WB analysis of HeLa whole cell lysate using GTX57571 HAX1 antibody.

Loading : 30  $\mu$ g

Dilution : 1:1000



For full product information, images and publications, please visit our [website](#).