



SZABO SCANDIC

Part of Europa Biosite

Produktinformation



Forschungsprodukte & Biochemikalien



Zellkultur & Verbrauchsmaterial



Diagnostik & molekulare Diagnostik



Laborgeräte & Service

Weitere Information auf den folgenden Seiten!
See the following pages for more information!



Lieferung & Zahlungsart

siehe unsere [Liefer- und Versandbedingungen](#)

Zuschläge

- Mindermengenzuschlag
- Trockeneiszuschlag
- Gefahrgutzuschlag
- Expressversand

SZABO-SCANDIC HandelsgmbH

Quellenstraße 110, A-1100 Wien

T. +43(0)1 489 3961-0

F. +43(0)1 489 3961-7

mail@szabo-scandic.com

www.szabo-scandic.com

[linkedin.com/company/szaboscandic](https://www.linkedin.com/company/szaboscandic) 

Thymidylate synthase antibody [AT1S5]

Cat No. GTX57572

Host	Mouse
Clonality	Monoclonal
Isotype	IgG2b
Application	WB, ICC/IF, FACS
Reactivity	Human

Package
100 µl

APPLICATION

Application Note

*Optimal dilutions/concentrations should be determined by the researcher.

Suggested dilution	Dilution
WB	1:500-1:1000
ICC/IF	1:500-1:1000
FACS	Assay dependent

Not tested in other applications.

Calculated MW 36 kDa. ([Note](#))

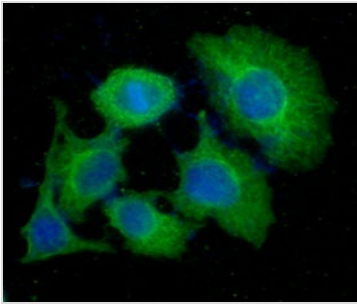
PROPERTIES

Form	Liquid
Buffer	PBS (pH 7.4), 0.02% sodium azide, 10% glycerol
Storage	Store as concentrated solution. Centrifuge briefly prior to opening vial. For short-term storage (1-2 weeks), store at 4°C. For long-term storage, aliquot and store at -20°C or below. Avoid multiple freeze-thaw cycles.
Concentration	1 mg/ml (Please refer to the vial label for the specific concentration.)
Immunogen	The clone AT1S5 is derived from hybridization of mouse F2 myeloma cells with spleen cells from BALB/c mice immunized with a recombinant human TYMS protein.
Purification	Protein G Purified
Conjugation	Unconjugated
Note	For laboratory use only. Not for any clinical, therapeutic, or diagnostic use in humans or animals. Not for animal or human consumption.



For full product information, images and publications, please visit our [website](#).

DATA IMAGES

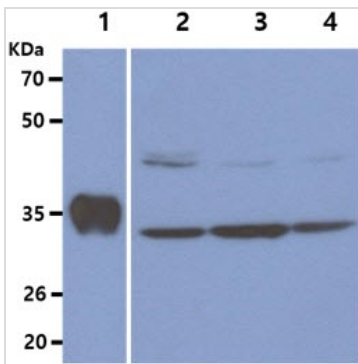
**GTX57572 ICC/IF Image**

ICC/IF analysis of HeLa cells using GTX57572 Thymidylate synthase antibody.

Blue: DAPI

Green: Primary antibody

Dilution: 1:100

**GTX57572 WB Image**

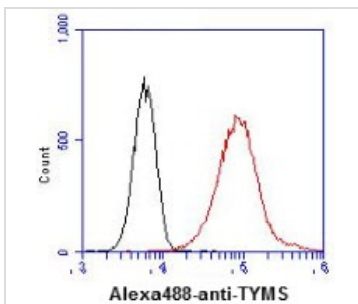
WB analysis of various samples using GTX57572 Thymidylate synthase antibody.

Lane 1 : Recombinant Human Thymidylate synthase protein (50 ng)

Lane 2 : HeLa whole cell lysate (40 µg)

Lane 3 : Jurkat whole cell lysate (40 µg)

Lane 4 : MCF-7 whole cell lysate (40 µg)

**GTX57572 FACS Image**

FACS analysis of HeLa cells using GTX57572 Thymidylate synthase antibody.

Cell Number: 1×10^6 cells

Primary antibody: Red line

Antibody amount: 2-5 µg



For full product information, images and publications, please visit our [website](#).